

# 2014

## SMART METER

### QUICKLY AND PRECISION



宥億企業股份有限公司 02-77463368

www.yoie.com.tw Mail:sales@yoie.com.tw

## >>> About us

### >>> 公司介绍 / Company Profile:

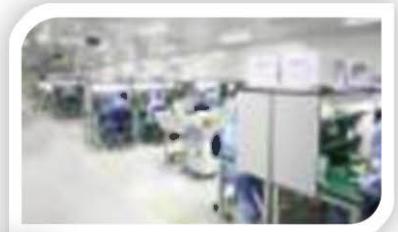
深圳市极致汇仪科技有限公司源于极致兴通仪表事业部。作为一家专注于无线测试领域的高科技公司，极致汇仪致力于为客户提供业界领先的测试方案。

As a professional Wireless Test Instrument Supplier, Shenzhen itest tech co., Ltd is committed to providing industry-leading wireless test solution.

### >>> 企业宗旨 / Corporate Vision:

以市场为导向，以员工为根本。聚焦仪器市场，持续创造价值。

With Excellence as our target, Customer as our center, Creative is our base and Staff is our foundation to Provide first-rate Product and Service.





»» About us

»» 团队合影 / Product development team



»» 市场分布 / iTest in Asia



»» 产品全家福 / Products



»» 技术认证 / Certificates



ISO9001



ISO14001



EN60950-1(10G)



ROHS



CE



FCC

## WT-200 WLAN & BT Test Solution



### Applications

WLAN & BT Product Physical layer Test Suitable for R&D and Manufacturing

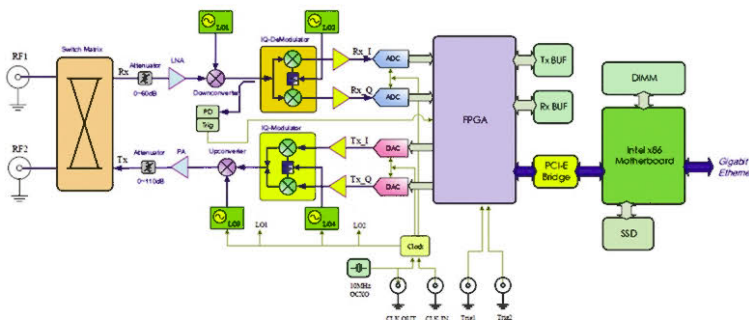
### Introduction

The WT-200 tester is designed to fit the production test requirements of all products integrating IEEE 802.11a/b/g/n/ac WLAN and Bluetooth technology. It's a all in one test solution for both TX and RX measurements.

### Features

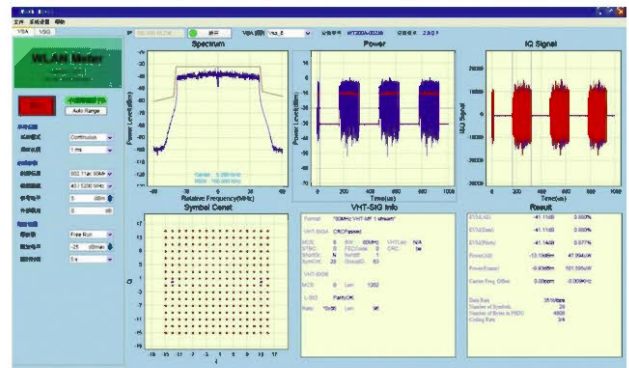
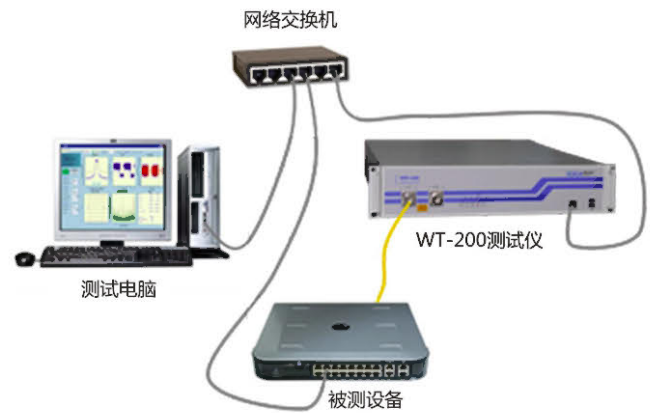
- High-precise VSA and VSG and support simultaneous RX and TX measurements
- C/C++ based analysis engine to achieved higher test speed (no MATLAB library required)
- Easy-to-use C/C++ based API, and Firmware and software are Field upgradeable
- High reliability design to reduce maintenance cost(Dust-proof, Quiet, ESD Protection)
- High speed ATE program, Built-in 4-device parallel test capability for high test system efficiency
- OCXO clock, Frequency accuracy < 0.05ppm
- Upgraded to support MIMO Test \*
- Upgraded to support Signaling Test \*

### WT-200 inner block diagram



### Detail Specifications

VSA	Specification
Frequency Band	2.4-2.5GHz, 4.9-6.0GHz
Supported Standards	IEEE STD 802.11a/b/g/n/ac Bluetooth 1.0/ 2.0/ 3.0/ 4.0
Input Power	+30 to -70dBm
Analysis Bandwidth	120MHz (±60MHz)
Quantization	14bit
Power measurement accuracy	Specification: ± 1.0 dB (for levels ≥ -50 dBm) Typical: ± 0.5 dB
Residual EVM	< -38dB ( -41dB Typical)
Waveform capture duration	100us ~ 50ms (32M Samples)
Trigger Mode	Signal / Free Run
Input Return Loss	> 14 dB
VSG	Specification
Frequency Band	2.4-2.5GHz, 4.9-6.0GHz
Supported Standards	IEEE STD 802.11a/b/g/n/ac Bluetooth 1.0/ 2.0/ 3.0/ 4.0
Output Power	-10 to -90dBm
Bandwidth	120MHz (±60MHz)
Quantization	16bit
Output power accuracy	Specification: ± 1.0 dB Typical: ± 0.5 dB
Residual EVM	< -38dB ( -43dB Typical)
Waveform Generator duration	100us ~ 50ms (32M Samples)
Output Return Loss	> 14 dB





## WT-208 Multi-DUT Test System



### Applications

- WLAN & BT Product Physical layer Test Suitable for R&D and Manufacturing
- Specifically optimize for the AP/Router Manufacturing Test

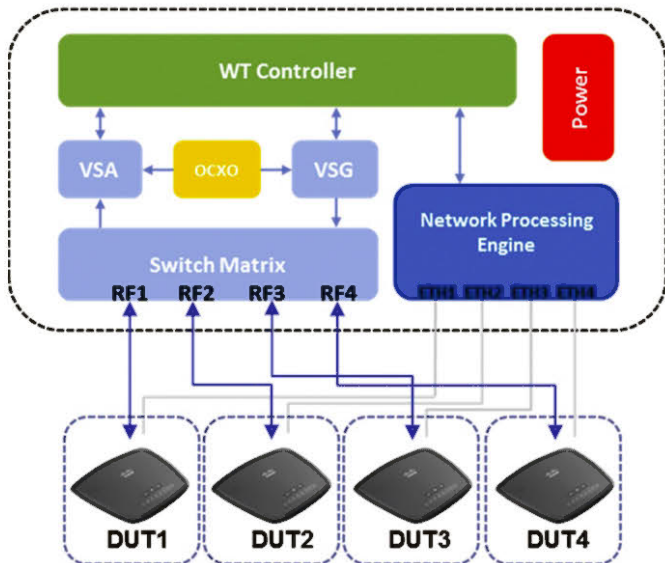
### Introduction

The WT-208 tester include all the functions and features of the WT-200, and adding high-performance Switch-Matrix and Network Processing Engine, become a super multi-DUT test system.

### Features

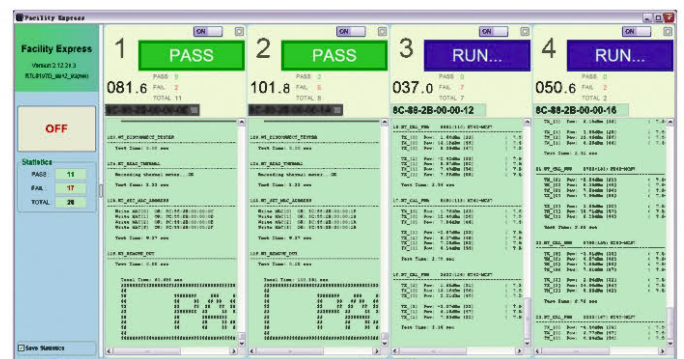
- Provide 4 RF ports can connected up to 4 DUT, no need power dividers
- Provide 4 Giga-ETH can connected to DUT's ETH interface, no need 4 drive PCs
- Support DUTs are same IP address
- Multi USB Module Tester coming soon\*
- Multi mPCI/mPCIe wireless card Tester coming soon\*

### WT-208 inner block diagram



### Detail Specifications

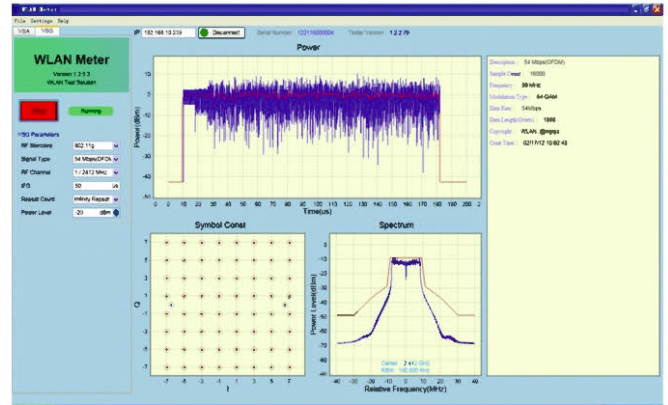
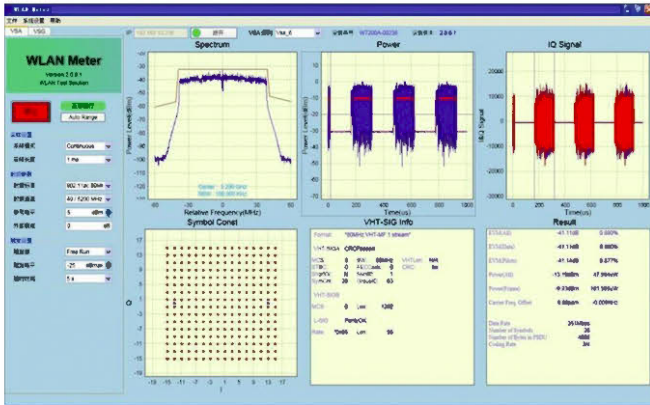
VSA	Specification
Frequency Band	2.4-2.5GHz, 4.9-6.0GHz
Supported Standards	IEEE STD 802.11a/b/g/n/ac Bluetooth 1.0/ 2.0/ 3.0/ 4.0
Input Power	+30 to -70dBm
Analysis Bandwidth	120MHz (±60MHz)
Quantization	14bit
Power measurement accuracy	Specification: ± 1.0 dB (for levels ≥ -50 dBm) Typical: ± 0.5 dB
Residual EVM	< -38dB (-41dB Typical)
Waveform capture duration	100us ~ 50ms (32M Samples)
Trigger Mode	Signal / Free Run
Input Return Loss	> 14 dB
VSG	Specification
Frequency Band	2.4-2.5GHz, 4.9-6.0GHz
Supported Standards	IEEE STD 802.11a/b/g/n/ac Bluetooth 1.0/ 2.0/ 3.0/ 4.0
Output Power	-10 to -90dBm
Bandwidth	120MHz (±60MHz)
Quantization	16bit
Output power accuracy	Specification: ± 1.0 dB Typical: ± 0.5 dB
Residual EVM	< -38dB (-43dB Typical)
Waveform Generator duration	100us ~ 50ms (32M Samples)
Output Return Loss	> 14 dB



## WLAN Meter & Facility Introduction

### WLAN Meter

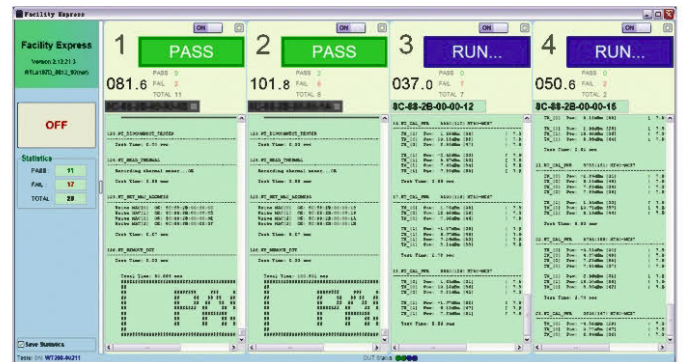
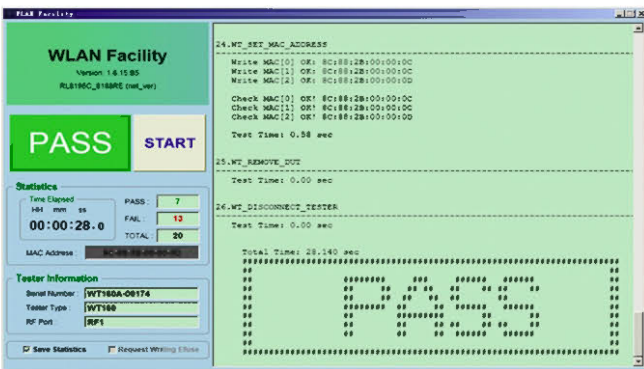
- ◆ R&D test software
- ◆ Support WT-160, WT-200 and WT-208
- ◆ Easy to use
- ◆ Flexible windows layout
- ◆ Convenient zoom operating
- ◆ Independent VSA and VSG



- ◆ Analyzing power, Spectrum, EVM, CCDF, IQ Signal, Symbol Const, Eye diagram, Power Ramp, etc.
- ◆ Auto range makes testing simplify and get correct result fastly.
- ◆ Signal trigger and free run modes can be selected in different IFG WLAN signal testing.
- ◆ Generate WLAN signals using for testing receiver performance
- ◆ Can set WLAN signal type, channel number, power level, packets numbers, and external attenuation

### WLAN Facility

- ◆ High-speed ATE software
- ◆ Calibration and verification
- ◆ Flexible configuration for test flow
- ◆ Support ping-pong test mode
- ◆ Support most popular chipset



- ◆ The most important application is production testing.
- ◆ Main production testing software are ready of MTK, Ralink, and Realtek solution, and developing of Atheros, Broadcom solution.
- ◆ High Testing efficiency.
- ◆ Simple operation.
- ◆ Open API for customer developing testing software.




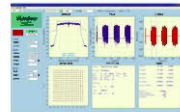




## FAE & Service

### iTest Web Technical Service

选取以下产品获得支持

热卖、热评、最新产品

 WT-208	 WT-200	 WT-160	 WLAN Meter	 WLAN Facility	 所有产品
---	---	---	--	--	---

 <b>手册</b> 了解如何设置、使用和故障 诊断产品	 <b>技术规格</b> 查看硬件和软件的规格和 系统要求。	 <b>行业技术</b> 获取产品相关行业的技术标准。	 <b>下载</b> 获取产品相关最新软件。
--	--	---	---

<b>常见问题</b> 查看产品常见的一些问题与解决方法 	<b>服务与支持</b> 获取产品相关售后服务信息和技术支持方式 	<b>论坛</b> 最新产品、软件发布信息，查找并与其他用户共享解决方案，建议与反馈等 
---	---	---

### iTest Open Laboratory



为了回馈社会，给客户提供更有效的支持，促进中国高科技产业及为整个社会发展做出贡献，极致汇仪于2013年7月在深圳建立了无线产品测试的开放实验室。

这是极致汇仪在全球建立的第一个面向客户完全免费开放的测试实验室。极致汇仪开放实验室在面向客户提供一个多领域的专业测试环境，涵盖整个产品/项目的生命周期，从最开始产品设计、研发，到量产/实施的各个阶段，提供相应的测试解决方案和专业的技术咨询服务。

在这里：

- 我们尽力为您创建真实的测试环境，包括测试仪器、附件及辅助设施等环境，在进一步投资之前，您可以在这里验证测试方案，增强您的信心；
- 我们的技术专家会在您需要时，向您提供专业的咨询和支持，帮您探求最佳的解决方案；
- 简单易行、多样的申请方式，使您能够方便地预订开放实验室。也可以提供测试样品，由我们的技术专家帮助您进行测试验证，共同探讨测试方案。

我们将以全新的理念，和您共同努力，将其建设成为帮助您发现问题，并最终解决问题的实践中心。

In order to contribute to the community , to provide more effective support to promote the Chinese high-tech industry and technology development. The iTest's Open Laboratory of wireless products testing established in July 2013 in Shenzhen.

This is the iTest established the first completely free for customers testing laboratory in the global. This open laboratory in more than one area of professional testing environment , covering the entire life cycle of a product/project from the pre-research, design and development , to all stages of production / implementation , and provide the appropriate test solutions and professional and technical advisory services .

We will create the real test environment for you, including test instrument , accessories and auxiliary facilities. before further investment , where you can verify the test program , and enhance your confidence, shorten the cycle.

Our technical experts will provide you with professional advice, and help you sourcing the best solution.

You can easily book Laboratory . and You can also provide test samples, by our technical experts to help you test validation, to probe testing program.

We will be a new concept , and you work together to build a help you find the problem , and solve the problem Practice Center.

宥億企業股份有限公司 02-77463368

www.yoie.com.tw Mail:sales@yoie.com.tw



## 深圳市极致汇仪科技有限公司

SHENZHEN ITEST TECHNOLOGY CO.,LTD.

地址：深圳市南山区留仙大道1213号众冠红花岭工业南区2区2栋2层

电话：0755-21535646

传真：0755-26405551

网址：[www.itest.cn](http://www.itest.cn)

邮箱：[wtsales@itest.cn](mailto:wtsales@itest.cn)

宥億企業股份有限公司 02-77463368

[www.yoie.com.tw](http://www.yoie.com.tw) Mail:[sales@yoie.com.tw](mailto:sales@yoie.com.tw)