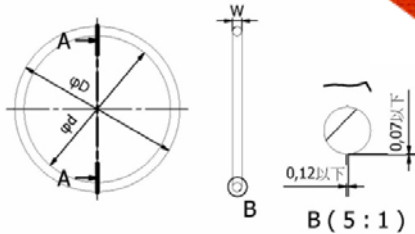


A-A (1:1)



# 僑營橡膠工業股份有限公司

地址: 台北縣樹林市佳園路二段六號

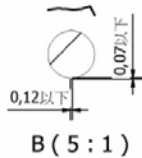
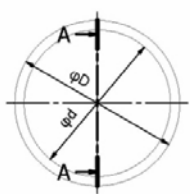
TEL:02-26803570(代表號) FAX: 02-26801905

E-mail: jessica.hsiao@chiaoying.com

Item No.	內徑 (d) x 線徑 (w)	Item No.	內徑 (d) x 線徑 (w)	Item No.	內徑 (d) x 線徑 (w)
568-002	1.07 x 1.27	1516-11	13.94 x 2.62	P25.5	25.2 x 3.5
568-003	1.42 x 1.53	568-015	14 x 1.78	S26	25.5 x 2
568-004	1.78 x 1.78	S15	14.5 x 1.5	P26	25.7 x 3.5
S3	2.5 x 1.5	V15	14.5 x 4	1516-20	26.57 x 3.53
568-005	2.57 x 1.78	P15	14.8 x 2.4	568-121	26.64 x 2.62
P3	2.8 x 1.9	S16	15.5 x 1.5	568-023	26.7 x 1.78
1516-1	2.9 x 1.78	1516-12	15.54 x 2.62	S28	27.5 x 2
S4	3.5 x 1.5	568-016	15.6 x 1.78	P28	27.7 x 3.5
1516-2	3.68 x 1.78	P16	15.8 x 2.4	1516-21	28.17 x 3.53
P4	3.8 x 1.9	1516-13	17.12 x 2.62	568-122	28.24 x 2.62
1516-3	4.47 x 1.78	568-017	17.17 x 1.78	568-024	28.3 x 1.78
S5	4.5 x 1.5	S18	17.5 x 1.5	S29	28.5 x 2
P5	4.8 x 1.9	P18	17.8 x 2.4	P29	28.7 x 3.5
1516-4	5.28 x 1.78	1516-15	18.64 x 3.53	P29.5	29.2 x 3.5
S6	5.5 x 1.5	1516-14	18.72 x 2.62	G30	29.4 x 3.1
P6	5.8 x 1.9	568-018	18.77 x 1.78	S30	29.5 x 2
1516-5	6.07 x 1.78	S20	19.5 x 1.5	P30	29.7 x 3.5
S7	6.5 x 1.5	P20	19.8 x 2.4	1516-22	29.74 x 3.53
P7	6.8 x 1.9	1516-16	20.22 x 3.53	568-123	29.82 x 2.62
S8	7.5 x 1.5	568-117	20.29 x 2.62	568-025	29.87 x 1.78
1516-6	7.65 x 1.78	568-019	20.35 x 1.78	P31	30.7 x 3.5
P8	7.8 x 1.9	P21	20.8 x 2.4	S31.5	31 x 2
S9	8.5 x 1.5	S22	21.5 x 1.5	P31.5	31.2 x 3.5
P9	8.8 x 1.9	P22A	21.7 x 3.5	1516-23	31.34 x 3.53
1516-8	9.19 x 2.62	P22	21.8 x 2.4	568-026	31.47 x 1.78
1516-7	9.25 x 1.78	1516-17	21.82 x 3.5	S32	31.5 x 2
S10	9.5 x 1.5	568-118	21.89 x 2.62	P32	31.7 x 3.5
P10	9.8 x 1.9	S22.4	21.9 x 2	1516-24	32.92 x 3.53
P10A	9.8 x 2.4	568-020	21.95 x 1.78	S34	33.5 x 2
S11.2	10.7 x 1.5	P22.4	21.1 x 3.5	V34	33.5 x 4
1516-9	10.77 x 2.62	1516-18	23.39 x 3.53	P34	33.7 x 3.5
P11	10.8 x 2.4	568-119	23.47 x 2.62	G35	34.4 x 3.1
568-013	10.82 x 1.78	S24	23.5 x 2	S35	34.5 x 2
P11.2	11 x 2.4	V24	23.5 x 4	1516-25	34.52 x 3.53
S12	11.5 x 1.5	568-021	23.52 x 1.78	P35	34.7 x 3.5
P12	11.8 x 2.4	P24	23.7 x 3.5	S35.5	35 x 2
S12.5	12 x 1.5	G25	24.4 x 3.1	P35.5	35.2 x 3.5
P12.5	12.3 x 2.4	S25	24.5 x 2	S36	35.5 x 2
568-014	12.42 x 1.78	P25	24.7 x 3.5	P36	35.7 x 3.5
1516-10	12.37 x 2.62	1516-19	24.99 x 3.53	1516-26	36.09 x 3.53
S14	13.5 x 1.5	568-120	25.07 x 2.62	1516-28	37.46 x 5.33
P14	13.8 x 2.4	568-022	25.12 x 1.78	S38	37.5 x 2

\* D = d + 2w

A-A (1:1)



B (5:1)



# 僑營橡膠工業股份有限公司

地址: 台北縣樹林市佳園路二段六號

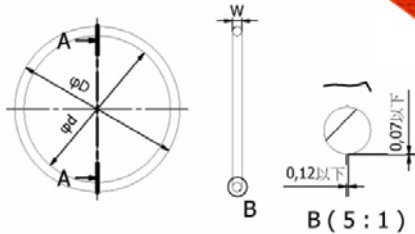
TEL:02-26803570(代表號) FAX: 02-26801905

E-mail: jessica.hsiao@chiaoying.com

Item No.	內徑 (d) x 線徑 (w)	Item No.	內徑 (d) x 線徑 (w)	Item No.	內徑 (d) x 線徑 (w)
1516-27	37.69 x 3.53	P55	54.6 x 5.7	P80	79.6 x 5.7
P38	37.7 x 3.5	S56	55.5 x 2	1516-42	81.92 x 5.33
S39	38.5 x 2	P56	55.6 x 5.7	1517-14	82.14 x 3.53
P39	38.7 x 3.5	1516-34	56.52 x 5.33	V85	84 x 4
G40	39.4 x 3.1	1517-6	56.74 x 3.53	G85	84.4 x 3.1
S40	39.5 x 2	P58	57.6 x 5.7	S85	84.5 x 2
V40	39.5 x 4	G60	59.4 x 3.1	P85	84.6 x 5.7
P40	39.7 x 3.5	S60	59.5 x 2	1516-43	85.09 x 5.33
1516-29	40.64 x 5.33	P60	59.6 x 5.7	1517-15	85.32 x 3.53
P41	40.7 x 3.5	1516-35	59.69 x 5.33	1516-44	88.26 x 5.33
1517-1	40.87 x 3.53	1517-7	59.92 x 3.53	1517-16	88.49 x 3.53
S42	41.5 x 2	P62	61.6 x 5.7	G90	89.4 x 3.1
P42	41.7 x 3.5	S63	62.5 x 2	S90	89.5 x 2
S44	43.5 x 2	P63	62.6 x 5.7	P90	89.6 x 5.7
P44	43.7 x 3.5	1516-36	62.86 x 5.33	1516-45	91.44 x 5.33
1516-30	43.82 x 5.33	1517-8	63.09 x 3.53	1517-17	91.67 x 3.53
1517-2	44.04 x 3.53	G65	64.4 x 3.1	G95	94.4 x 3.1
G45	44.4 x 3.1	S65	64.5 x 2	S95	94.5 x 2
S45	44.5 x 2	P65	64.6 x 5.7	P95	94.6 x 5.7
P45	44.7 x 3.5	1516-37	66.04 x 5.33	1516-46	94.62 x 5.33
S46	45.5 x 2	1517-9	66.27 x 3.53	1517-18	94.84 x 3.53
P46	45.7 x 3.5	S67	66.5 x 2	1516-47	97.79 x 5.33
1516-31	46.99 x 5.33	P67	66.6 x 5.7	1517-19	98.02 x 3.53
1517-3	47.22 x 3.53	V70	69 x 4	V100	99 x 4
S48	47.5 x 2	1516-38	69.22 x 5.33	G100	99.4 x 3.1
P48A	47.6 x 5.7	G70	69.4 x 3.1	S100	99.5 x 2
P48	47.7 x 3.5	1517-10	69.44 x 3.53	P100	99.6 x 5.7
P49	48.7 x 3.5	S70	69.5 x 2	1516-48	100.96 x 5.33
G50	49.4 x 3.1	P70	69.6 x 5.7	1517-20	101.19 x 3.53
S50	49.5 x 2	S71	70.5 x 2	P102	101.6 x 5.7
P50A	49.6 x 5.7	P71	70.6 x 5.7	1516-49	104.14 x 5.33
P50	49.7 x 3.5	1516-39	72.39 x 5.33	1517-21	104.37 x 3.53
1516-32	50.16 x 5.33	1517-11	72.62 x 3.53	G105	104.4 x 3.1
1517-4	50.39 x 3.53	G75	74.4 x 3.1	S105	104.5 x 2
P52	51.6 x 5.7	S75	74.5 x 2	P105	104.6 x 5.7
S53	52.5 x 2	P75	74.6 x 5.7	1516-50	107.32 x 5.33
P53	52.6 x 5.7	1516-40	75.56 x 5.33	1517-22	107.54 x 3.53
1516-33	53.34 x 5.33	1517-12	75.79 x 3.53	G110	109.4 x 3.1
1517-5	53.57 x 3.53	1516-41	78.74 x 5.33	S110	109.5 x 2
G55	54.4 x 3.1	1517-13	78.97 x 3.53	P110	109.6 x 5.7
S55	54.5 x 2	G80	79.4 x 3.1	1516-51	110.49 x 5.33
V55	54.5 x 4	S80	79.5 x 2	1517-23	110.72 x 3.53

\* D = d + 2w

A-A (1:1)



# 僑營橡膠工業股份有限公司

地址: 台北縣樹林市佳園路二段六號

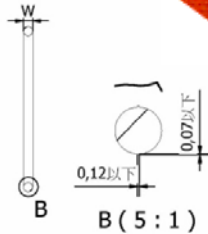
TEL:02-26803570(代表號) FAX: 02-26801905

E-mail: jessica.hsiao@chiaoying.com

Item No.	內徑 (d) x 線徑 (w)	Item No.	內徑 (d) x 線徑 (w)	Item No.	內徑 (d) x 線徑 (w)
S112	111.5 x 2	1516-61	142.24 x 6.98	P190	189.5 x 8.4
P112	111.6 x 5.7	1517-33	142.47 x 3.53	1516-70	189.86 x 6.98
1516-52	113.66 x 5.33	G145	144.4 x 3.1	1517-42	190.09 x 3.53
1516-88	113.66 x 6.98	S145	144.5 x 2	G195	194.3 x 5.7
1517-24	113.89 x 3.53	P145	144.6 x 5.7	P195	194.5 x 8.4
G115	114.4 x 3.1	1516-62	145.42 x 6.98	1516-71	196.22 x 6.98
S115	114.5 x 2	1517-34	145.64 x 3.53	1517-43	196.44 x 3.53
P115	114.6 x 5.7	V150	148.5 x 4	G200	199.3 x 5.7
1516-53	116.84 x 6.98	1516-63	148.59 x 6.98	P200	199.5 x 8.4
1517-25	117.07 x 3.53	1517-35	148.82 x 3.53	1516-72	202.56 x 6.98
V120	119 x 4	G150	149.3 x 5.7	1517-44	202.79 x 3.53
G120	119.4 x 3.1	S150	149.5 x 2	P205	204.5 x 8.4
S120	119.5 x 2	P150A	149.5 x 8.4	P209	208.5 x 8.4
P120	119.6 x 5.7	P150	149.6 x 5.7	1517-45	209.14 x 3.53
1516-54	120.02 x 6.98	1516-64	151.76 x 6.98	G210	209.3 x 5.7
1517-26	120.24 x 3.53	1517-36	151.99 x 3.53	P210	209.5 x 8.4
1516-55	123.19 x 6.98	G155	154.3 x 5.7	P215	214.5 x 8.4
1517-27	123.42 x 3.53	P155	154.5 x 8.4	1516-73	215.26 x 6.98
G125	124.4 x 3.1	1516-65	158.12 x 6.98	1516-46	215.49 x 3.53
S125	124.5 x 2	1517-37	158.34 x 3.53	G220	219.3 x 5.7
P125	124.6 x 5.7	G160	159.3 x 5.7	P220	219.5 x 8.4
1516-56	126.36 x 6.98	P160	159.5 x 8.4	1517-47	221.84 x 3.53
1517-28	126.59 x 3.53	G165	164.3 x 5.7	V225	222.5 x 6
G130	129.4 x 3.1	1516-66	164.46 x 6.98	P225	224.5 x 8.4
S130	129.5 x 2	P165	164.5 x 8.4	1516-74	227.96 x 6.98
1516-57	129.54 x 6.98	1517-38	164.69 x 3.53	1517-48	228.19 x 3.53
P130	129.6 x 5.7	G170	169.3 x 5.7	G230	229.3 x 5.7
1517-29	129.77 x 3.53	P170	169.5 x 8.4	P230	229.5 x 8.4
S132	131.5 x 2	1516-67	170.82 x 6.98	P235	234.5 x 8.4
P132	131.6 x 5.7	1517-39	171.04 x 3.53	1517-49	234.54 x 3.53
1516-58	132.72 x 6.98	V175	173 x 4	G240	239.3 x 5.7
1517-30	132.94 x 3.53	G175	174.3 x 5.7	P240	239.5 x 8.4
G135	134.4 x 3.1	P175	174.5 x 8.4	1516-75	240.66 x 6.98
S135	134.5 x 2	1516-68	177.16 x 6.98	1517-50	240.89 x 3.53
P135	134.6 x 5.7	1517-40	177.39 x 3.53	P245	244.5 x 8.4
1516-59	135.89 x 6.98	G180	179.3 x 5.7	1517-51	247.24 x 3.53
1517-31	136.12 x 3.53	P180	179.5 x 8.4	G250	249.3 x 5.7
1516-60	139.06 x 6.98	1516-69	183.52 x 6.98	P250	249.5 x 8.4
1517-32	139.29 x 3.53	1517-41	183.74 x 3.53	1516-76	253.36 x 6.98
G140	139.4 x 3.1	G185	184.3 x 5.7	1517-52	253.59 x 3.53
S140	139.5 x 2	P185	184.5 x 8.4	P255	254.5 x 8.4
P140	139.6 x 5.7	G190	189.3 x 5.7	G260	259.3 x 5.7

\* D = d + 2w

A-A (1:1)



# 僑營橡膠工業股份有限公司

地址: 台北縣樹林市佳園路二段六號

TEL: 02-26803570 (代表號) FAX: 02-26801905

E-mail: jessica.hsiao@chiaoying.com

Item No.	內徑 (d) x 線徑 (w)	Item No.	內徑 (d) x 線徑 (w)	Item No.	內徑 (d) x 線徑 (w)
P260	2593 x 5.7				
P265	264.5 x 8.4				
1516-77	266.06 x 6.98				
G270	269.3 x 5.7				
P270	269.5 x 8.4				
V275	272 x 6				
P275	274.5 x 8.4				
1516-78	278.76 x 6.98				
G280	279.3 x 5.7				
P280	279.5 x 8.4				
P285	284.5 x 8.4				
G290	289.3 x 5.7				
P290	289.5 x 8.4				
1516-79	291.46 x 6.98				
P295	294.5 x 8.4				
G300	299.3 x 5.7				
P300	299.5 x 8.4				
1516-80	304.16 x 6.98				
P315	314.5 x 8.4				
1516-81	316.86 x 6.98				
P320	319.5 x 8.4				
V325	321.5 x 6				
1516-82	329.56 x 6.98				
P335	334.5 x 8.4				
P340	339.5 x 8.4				
1516-83	342.26 x 6.98				
P355	354.5 x 8.4				
1516-84	354.96 x 6.98				
P360	359.5 x 8.4				
1516-85	367.66 x 6.98				
P375	374.5 x 8.4				
V380	376 x 6				
1516-86	380.36 x 6.98				
P385	384.5 x 8.4				
1516-87	393.06 x 6.98				
P400	399.5 x 8.4				

\* D = d + 2w