

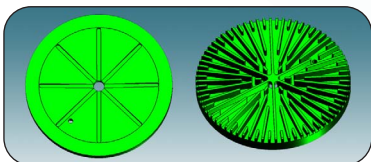


FEATURES 設備特性

1. Specially designed for PU reactive hot melt. Teflon coated heating pan for easily cleaning of retained hot melt. Heating pan with fins designed for common hot melt application is available too.
專為溼氣反應型熱熔膠而設計，加熱盤鐵氟龍塗裝，可輕易將殘膠撥除，便於整理，同時提供一般熱熔膠專用鱗狀加熱盤面供選擇。
2. When heating pan is lowered into the tank, only the upper part of barrel is heated. Other parts remain at room temperature. The applied packing ring can resist high pressure and heat, isolate moisture air, and prevent PU adhesive reacting in the barrel.
利用加熱盤下壓置入膠桶中，只有桶內上層表面受熱，未受熱部份保持室溫狀態，配備高耐壓耐溫防漏環，氣密良好可確實隔絕濕氣，避免熱熔膠於桶內反應硬化。
3. The precise temperature control system adopts PID, which gives alarm when over heating and switch off heater automatically. The precision reaches $\pm 1^{\circ}\text{C}$. This can reduce chars inside drum and makes the machine more durable.
配備 PID 精密控溫系統，可作超溫警報及自動斷電保護，確保工作安全，精密控溫達 $\pm 1^{\circ}\text{C}$ ，防止熔膠碳化，延長設備壽命。
4. Hot melt level detector is installed. Level is adjustable. When hot melt is nearly used up, an alarm will notify the operator to change another drum of hot melt promptly.
可調式膠桶容量警報裝置，可設定換桶預告及膠量用盡換桶警報之位置，便利操作人員及早準備換桶作業。
5. Speed-Glue tracing system is optional. When this machine works as a glue supplier (a melter) only, flow-rate can be regulated automatically depending on the consumption of glue of the main machine (coater or sprayer).
可選配膠量自動追蹤系統，當此機作為補膠用途時可視主機速度及用量自動調整出膠量。

SPECIFICATIONS 設備規格

SPEC 規格	UNIT 單位	HG1B0A
Applicable Bucket 適用膠桶		55 Gallon / $\Phi 571$ mm
Glue Flow Rate 出膠速率	g/MIN	1500
Viscosity 使用黏稠度	CPS	100000
Max. Operation Temp. 最高操作溫度	$^{\circ}\text{C}$	200
Sets of Hose & Gun 保溫管與噴槍數量	Set	1 - 2
Dimensions (L x W x H) 尺寸(長 x 寬 x 高)	mm	1460 x 800 x 1570 (Down) - 2540 (Up)
Weight 重量	Kg	Approx. 670
Machine Power Consumption 主機功率	Watt	23000
Power Requirement 電力需求		220V AC / 80A 50/60Hz / 3 Φ



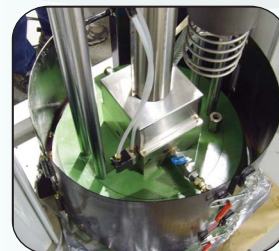
Dedicated heating pan designed for different application purposes
各式加熱鱗狀盤面供選擇



Level Detector
可調式膠桶液位警報



Touch Screen Interface Panel
人機界面控制面板



Drum Jacket (Optional Accessories)
膠桶固定座可供選購

HWANG SUN ENTERPRISE CO., LTD. 皇尚企業股份有限公司

Headquarters 臺灣總公司

No. 8, Keji 1st Rd.,
Annan District, Tainan 70955, Taiwan
70955 台南市安南區科技一路 8 號 (科工區)
TEL: +886-6-3842889 FAX: +886-6-3842888

Taichung 臺灣台中

4F-4, No. 82, Daying W. 1st St.,
Nantun District, Taichung 40865, Taiwan
40865 台中市南屯區大英西一街 82 號 4 樓之 4
TEL: +886-4-24739593 FAX: +886-4-24714414

Taipei 臺灣台北

1F, No. 25-1, Hami St.,
Datong District, Taipei 10370, Taiwan
10370 台北市哈密街 25 之 1 號 1 樓
TEL: +886-2-25933744 FAX: +886-2-25923570

Suzhou 中國蘇州

Building No. 28, Li Tang Road, Kua Tang Town, Su Zhou
Industrial Park, Su Zhou City, Jiang Su Province, China
江蘇省蘇州市園區跨塘鎮蠡塘路逸苑別墅 28 棟
TEL: +86-512-67865516 FAX: +86-512-68557601

ISO 9001:2008 SGS REGISTERED FIRM

Dongguan Hwang Sun Industrial Co., Ltd. 東莞皇尚實業有限公司

Behind the Dongying Restaurant (Catty corner from No.
36 Liaoxia Rd., Liaoxia Ave.), Provincial Highway S256,
Liaoxia Village, Houjie Town, Dongguan 523960, China
中國東莞市厚街鎮寮廈村 S256 省道旁東盈酒店後
(寮廈大道寮廈路 36 號斜對面)
TEL: +86-769-81636099 FAX: +86-769-81636399

www.hes.com.tw | hwangsun@seed.net.tw