

PHONE PLUG



SP101A-1-Z	6.3mm STEREO PLUG, W/STRAIN RELIEF SPRING	OD:6mm
SP101G-Z	6.3mm STEREO PLUG, GOLD PLATED W/ STRAIN RELIEF SPRING	OD:6mm
SP101-1-F-Z	6.3mm STEREO PLUG, W/ STRAIN RELIEF SPRING	OD:6mm
SP101-CP1	6.3mm STEREO PLUG, COLOR:BLACK, RED, BLUE, YELLOW, GREEN	OD:4~6mm
SP101-CP1-M	6.3mm STEREO PLUG, W/ZINC DIECAST CAP COLOR:BLACK, RED, BLUE, YELLOW, GREEN	OD:4~6mm
SP101-CP2	6.3mm STEREO PLUG,	OD:4~6mm
SP101-CP2-BK	6.3mm STEREO PLUG, BLACK HOUSING	OD:4~6mm
SP101-CP2-M	6.3mm STEREO PLUG, W/ZINC DIECAST CAP	OD:4~6mm
SP101-CP2H	6.3mm STEREO PLUG, HIGH TEMP SOLDER TYPE	OD:4~6mm
SP101-CP2H-BK	6.3mm STEREO PLUG, BLACK HOUSING, HIGH TEMP SOLDER TYPE	OD:4~6mm
SP101-CP2-M-1	6.3mm STEREO PLUG, W/ZINC DIECAST CAP	OD:7mm
SP101-CP8-TG	6.3mm STEREO PLUG, W/METAL CAP, TIP GOLD PLATED	OD:9mm
SP101-K-G	6.3mm STEREO PLUG, BLACK SHELL, GOLD PLATED	OD:7.5mm



PHONE PLUG

SP101-CP9	6.3mm STEREO PLUG, WHITE HOUSING COLOR:BLACK, RED	OD:4~6mm
SP101-CP9-G	6.3mm STEREO PLUG, WHITE HOUSING, GOLD PLATED, COLOR:BLACK, RED	OD:4~6mm
SP101-CP10	6.3mm STEREO PLUG, ALUMINUM HOUSING	OD:4~6mm
SP101-CP10-G	6.3mm STEREO PLUG, ALUMINUM HOUSING, GOLD PLATED	OD:4~6mm
SP101-CP11-G	6.3mm STEREO PLUG, ALUMINUM HOUSING, GOLD PLATED	OD:4~6mm
SP101-CP12-G	6.3mm STEREO PLUG, NICKEL TIN HOUSING, GOLD PLATED	OD:6mm
SP101-CP12-1-G	6.3mm STEREO PLUG, GRAY CHROME HOUSING, GOLD PLATED	OD:6mm
SP101-CP14-G	6.3mm STEREO PLUG, NICKEL TIN HOUSING, GOLD PLATED, SHELL METAL CLAMP TYPE COLOR RING:BLACK, GREEN, RED	OD:6mm
SP101-CP15-G	6.3mm STEREO PLUG, NICKEL TIN HOUSING, GOLD PLATED,	OD:6mm
SP101-CP16-G	6.3mm STEREO PLUG, PEARL WHITE HOUSING, GOLD PLATED,	OD:6mm
SP101-CP17	6.3mm STEREO PLUG, NICKEL 360-DEGREE CRIMPABLE CABLE STRAIN RELIEF SPRING	OD:6.5mm
SP101H-N	6.3mm STEREO PLUG, SHORT SOLDER PIN TYPE	OD:7.5mm
SP101H-N-Z	6.3mm STEREO PLUG, SHORT SOLDER PIN TYPE, SHELL IS ZINC DIECAST	OD:7.5mm
SP101H-L	6.3mm STEREO PLUG, JUMBO PLUG, SOLDER TYPE	OD:10mm
SP101H-L-G	6.3mm STEREO PLUG, JUMBO PLUG, GOLD PLATED, SOLDER TYPE	OD:10mm
SP101M	6.3mm STEREO PLUG, SPRING-GROUND, ALL NICKEL PLATED	OD:7.5mm
SP101M-G	6.3mm STEREO PLUG, SPRING-GROUND, ALL GOLD PLATED	OD:7.5mm
SP101R-S	6.3mm STEREO PLUG, RIGHT ANGLE	OD:7.5mm

OD:4.0~6.0



OD:7.5 OD:10.0



OD:4.0~6.0



OD:6.0

OD:7.5



OD:6.0
parts list



OD:6.0



OD:6.5

OD:7.5



OD:10.0



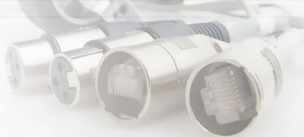
PHONE PLUG



SP102A-1-Z	6.3mm MONO PLUG,W/STRAIN RELIEF SPRING	OD:6mm
SP102G-Z	6.3mm MONO PLUG,GOLD PLATED W/ STRAIN RELIEF SPRING	OD:6mm
SP102-1-F-Z	6.3mm MONO PLUG,W/ STRAIN RELIEF SPRING	OD:6mm
SP102-CP1	6.3mm MONO PLUG,COLOR-BLACK,RED,BLUE,YELLOW,GREEN,	OD:4~6mm
SP102-CP1-M	6.3mm MONO PLUG,W/ZINC DIECAST CAP COLOR:BLACK,RED,BLUE,YELLOW,GREEN,	OD:4~6mm
SP102-CP2	6.3mm MONO PLUG,	OD:4~6mm
SP102-CP2-BK	6.3mm MONO PLUG,BLACK HOUSING	OD:4~6mm
SP102-CP2-M	6.3mm MONO PLUG,W/ZINC DIECAST CAP	OD:4~6mm
SP102-CP2H	6.3mm MONO PLUG, HIGH TEMP SOLDER TYPE	OD:4~6mm
SP102-CP2H-BK	6.3mm MONO PLUG,BLACK HOUSING, HIGH TEMP SOLDER TYPE	OD:4~6mm
SP102-CP2-M-1	6.3mm MONO PLUG,W/ZINC DIECAST CAP	OD:7mm
SP102-CP8-TG	6.3mm MONO PLUG,W/METAL CAP,TIP GOLD PLATED	OD:9mm
SP102-K-G	6.3mm MONO PLUG,BLACK SHELL, GOLD PLATED	OD:7.5mm



PHONE PLUG



**WITHOUT SOLDER CONNECTOR
-SUNRISE DESIGN TECHNIC
(THIS PRODUCT NOT FOR SALE!!)**

Our design technic



OD:4.0~6.0

SP102-CP9



SP102-CP9-G SP102-CP10 SP102-CP10-G

OD:4.0~6.0

ALUMINUM

OD:6.0



SP102-CP11-G SP102-CP12-G SP102-CP12-1-G

OD:6.0

OD: 6.5

SP102-CP15-G



SP102-CP16-G

SP102-CP17

OD:6.0

Parts list

Cable clamp

Shell

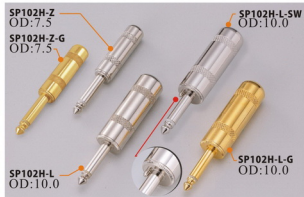
Connector body



SP102-CP14-G

SP102-CP9	6.3mm MONO PLUG,WHITE HOUSING COLOR:BLACK,RED	OD:4~6mm
SP102-CP9-G	6.3mm MONO PLUG,WHITE HOUSING, GOLD PLATED, COLOR:BLACK,RED	OD:4~6mm
SP102-CP10	6.3mm MONO PLUG,ALUMINUM HOUSING	OD:4~6mm
SP102-CP10-G	6.3mm MONO PLUG, ALUMINUM HOUSING, GOLD PLATED	OD:4~6mm
SP102-CP11-G	6.3mm MONO PLUG, ALUMINUM HOUSING, GOLD PLATED	OD:4~6mm
SP102-CP12-G	6.3mm MONO PLUG, NICKEL TIN HOUSING, GOLD PLATED	OD:6mm
SP102-CP12-1-G	6.3mm MONO PLUG,GRAY CHROME HOUSING, GOLD PLATED	OD:6mm
SP102-CP14-G	6.3mm MONO PLUG, NICKEL TIN HOUSING, GOLD PLATED, METAL SHELL CLAMP TYPE COLOR RING:BLACK,GREEN,RED	OD:6mm
SP102-CP15-G	6.3mm MONO PLUG, NICKEL TIN HOUSING, GOLD PLATED	OD:6mm
SP102-CP16-G	6.3mm MONO PLUG,PEARL WHITE HOUSING, GOLD PLATED	OD:6mm
SP102-CP17	6.3mm MONO PLUG,NICKEL 360-DEGREE CRIMPABLE CABLE STRAIN RELIEF SPRING	OD:6.5mm

PHONE PLUG



Using special EVA material on shell and can be extended as shown in picture.

SP102H-Z	6.3mm MONO PLUG,ZINC DIE-CAST SHELL,	OD:7.5mm
SP102H-Z-G	6.3mm MONO PLUG,ZINC DIE-CAST SHELL, GOLD PLATED,	OD:6mm
SP102H-L	6.3mm MONO PLUG,JUMBO PLUG,	OD:10mm
SP102H-L-G	6.3mm MONO PLUG,JUMBO PLUG, GOLD PLATED,	OD:10mm
SP102H-L-SW	6.3mm MONO PLUG, JUMBO PLUG,SOLDER TYPE, (W/CIRCUIT CLOSING DEVICE)	OD:10mm
SP102M	6.3mm MONO PLUG,SPRING-GROUND, ALL NICKEL PLATED,	OD:7.5mm
SP102M-G	6.3mm MONO PLUG,SPRING-GROUND, ALL GOLD PLATED,	OD:7.5mm
SP102M-TG	6.3mm MONO PLUG,SPRING-GROUND, TIP & SPRING WITH GOLD PLATED,	OD:7.5mm
SP102R	6.3mm MONO PLUG,RIGHT ANGLE, 2 PARTS TYPE	OD:7.5mm
SP102R-S	6.3mm MONO PLUG,RIGHT ANGLE, 3 PARTS TYPE	OD:7.5mm
SP102R-N	6.3mm MONO PLUG,RIGHT ANGLE	OD:8mm
SP103-1	6.3mm STEREO PLUG, W/PLASTIC STRAIN RELIEF SPRING	OD:6mm
SP104-1	6.3mm MONO PLUG,W/PLASTIC STRAIN RELIEF SPRING	OD:6mm