

092/23 Double Stage Filters for Sports and Fitness Equipment

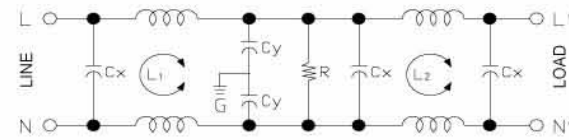


Features

High performance EMI filters specially designed for sports and fitness equipments.

Typical Applications

Sports equipment, steppers, running machines and other frequency inverter applications that require high noise suppression.



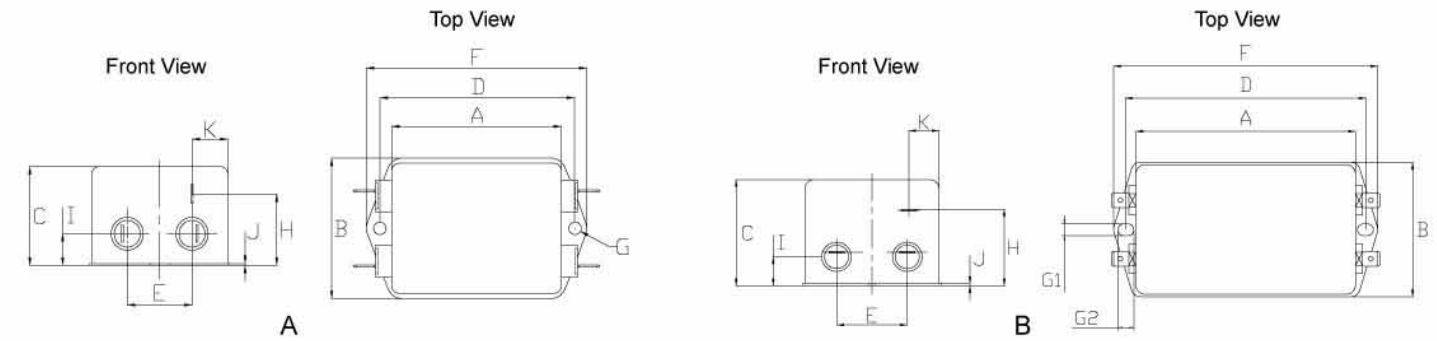
092/23 - Electrical Schematic

Technical Data

Rated Voltage	250 VAC Max.	Leakage Current	
Rated Current	4-20 A @ 40°C	@ 250 VAC 50 Hz	1.8 mA Max.
Operating Frequency	50/60 Hz	@ 115 VAC 60 Hz	1 mA Max.
Hipot Rating		IP Standard	65
Line to Line	1450 VDC	Climatic category	25/85/21
Line to Ground	2250 VDC		
Case	CRS Ni plated		
Packaging Quantity	60/45 pcs per carton		

Model No.	Rated Current @ 40°C	Mechanical Diagram	Unit Weight (g)	Terminal Options	
				In	Out
092.00423.00	4.0	A	195.0	Faston 6.35*0.8	Faston 6.35*0.8
092.00623.00	6.0	A	195.0	Faston 6.35*0.8	Faston 6.35*0.8
092.00823.00	8.0	B	323.0	Faston 6.35*0.8	Faston 6.35*0.8
092.01023.00	10.0	B	420.0	Faston 6.35*0.8	Faston 6.35*0.8
092.01623.00	16.0	B	400.0	Faston 6.35*0.8	Faston 6.35*0.8
092.02023.00	20.0	B	420.0	Faston 6.35*0.8	Faston 6.35*0.8

092 / 23 Mechanical Outlines



092 / 23 Mechanical Dimensions (mm) For reference only

Model No.	A	B	C	D	E	F	G	H	I	J	K
092.00423.00	63.2	52.0	38.0	75.0	25.0	85.0	4.8	27.5	12.3	0.6	13.3
092.00623.00	63.2	52.0	38.0	75.0	25.0	85.0	4.8	27.5	12.3	0.6	13.3
092.00823.00	92.5	58.0	41.0	105.0	30.0	115.0	5*6.8	33.0	13.0	0.8	13.5
092.01023.00	92.5	58.0	41.0	105.0	30.0	115.0	5*6.8	33.0	13.0	0.8	13.5
092.01623.00	92.5	58.0	41.0	105.0	30.0	115.0	5*6.8	33.0	13.0	0.8	13.5
092.02023.00	92.5	58.0	41.0	105.0	30.0	115.0	5*6.8	33.0	13.0	0.8	13.5

All dimensions in mm, 1 inch=25.4 mm

Insertion Loss in dB Measured in a 50Ω System

Model No.	Common Mode IL (Frequencies in MHz)							
	0.05	0.1	0.15	0.5	1.0	5.0	10.0	30.0
092.00423.00	26.0	31.0	33.0	58.0	74.0	75.0	78.0	74.0
092.00623.00	27.0	49.0	60.0	79.0	67.0	72.0	63.0	47.0
092.00823.00	20.0	53.0	61.0	74.0	66.0	50.0	43.0	42.0
092.01023.00	22.0	28.0	33.0	58.0	74.0	73.0	74.0	63.0
092.01623.00	24.0	26.0	28.0	39.0	35.0	42.0	41.0	20.0
092.02023.00	21.0	21.0	23.0	47.0	64.0	66.0	68.0	47.0

Model No.	Differential Mode IL (Frequencies in MHz)							
	0.05	0.1	0.15	0.5	1.0	5.0	10.0	30.0
092.00423.00	30.0	50.0	59.0	70.0	67.0	68.0	61.0	57.0
092.00623.00	35.0	47.0	69.0	81.0	69.0	72.0	72.0	73.0
092.00823.00	13.0	15.0	44.0	80.0	71.0	65.0	61.0	50.0
092.01023.00	17.0	38.0	52.0	67.0	59.0	65.0	61.0	36.0
092.01623.00	28.0	31.0	31.0	38.0	46.0	55.0	39.0	47.0
092.02023.00	23.0	24.0	24.0	51.0	62.0	44.0	39.0	30.0

Other specifications, requirements and customizations can be provided upon request.

To increase PF, use 018 series inductors in series with filter line.