

# 056 Feed-Through Filters

RoHS



### Features

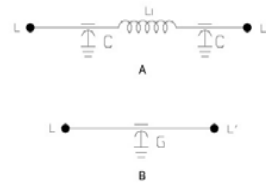
Feed-through filters provide high insertion loss over a broad band of frequencies from KHz to GHz frequency levels.

### Typical Applications

Shielded rooms, communication base stations, switching equipment.

### Technical Data

Rated Voltage	Up to 600 VAC/ 750 VDC Max.
Rated Current	1-250 A @ 40°C
Operating Frequency	50/60 Hz.
Hipot Rating	
Line to Ground	Up to 2700 VDC
Climatic category	25/85/21

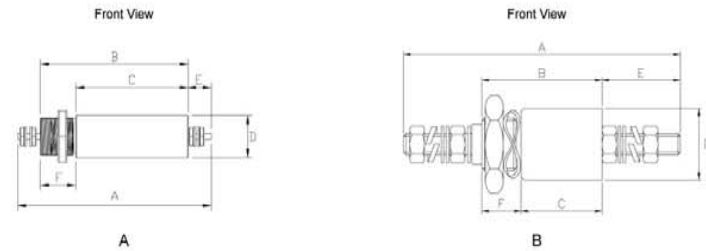


056 - Electrical Schematic

Model No.	Rated Current @ 40°C	Voltage Rating	Hipot	Leakage Current (mA) @ 250 VAC 50 Hz	Electrical Diagram	Unit Weight (g)	Terminal Options	
							In	Out
056.00501.00	5.0	600 VAC/750 VDC	2500 VDC	37.0	A	157.0	M3 Screw	M3 Screw
056.01601.00	16.0	250 VAC/440 VDC	1400 VDC	15.0	A	130.0	M3 Screw	M3 Screw
056.01612.00	16.0	250 VAC	2700 VDC	18.0	A	157.0	M3 Screw	M3 Screw
056.06001.00	60.0	250 VAC	1200 VDC	78.0	B	100.0	M6 Screw	M6 Screw
056.10001.00	100.0	130/250 VAC	1700 VDC	41.0	B	140.0	M8 Screw	M8 Screw

Items are available in either plated brass or finished aluminium tubes.

### 056 Mechanical Outlines



### 056 Mechanical Dimensions (mm) For reference only

Model No.	Mechanical Diagram	A	B	C	D	E	F	Mounting
056.00501.00	A	110.0	84.0	64.0	22.5	13.0	20.0	M20
056.01601.00	A	92.5	66.5	46.5	22.5	13.0	20.0	M20
056.01612.00	A	110.0	84.0	64.0	22.5	13.0	20.0	M20
056.06001.00	B	90.0	42.0	29.0	32.0	22.0	13.0	M20
056.10001.00	B	113.0	49.0	33.0	27.0	32.0	16.0	M20

All dimensions in mm, 1 inch=25.4 mm

### Insertion Loss in dB Measured in a 50Ω System

Model No.	Common Mode IL (Frequencies in MHz)							
	0.05	0.1	0.5	1.0	5.0	10.0	100.0	1000.0
056.00501.00	26.0	20.0	16.0	24.0	38.0	45.0	70.0	89.0
056.01601.00	26.0	20.0	16.0	24.0	38.0	45.0	70.0	89.0
056.01612.00	25.0	19.0	20.0	25.0	40.0	46.0	65.0	90.0
056.06001.00	12.0	19.0	34.0	38.0	53.0	58.0	83.0	100.0
056.10001.00	10.0	15.0	30.0	30.0	50.0	50.0	80.0	100.0

Other specifications, requirements and customizations can be provided upon request.