



EASYCONN ELECTRONICS

奕成電子

Company Profile



奕成電子有限公司

EASYCONN ELECTRONICS

Company brief introduction

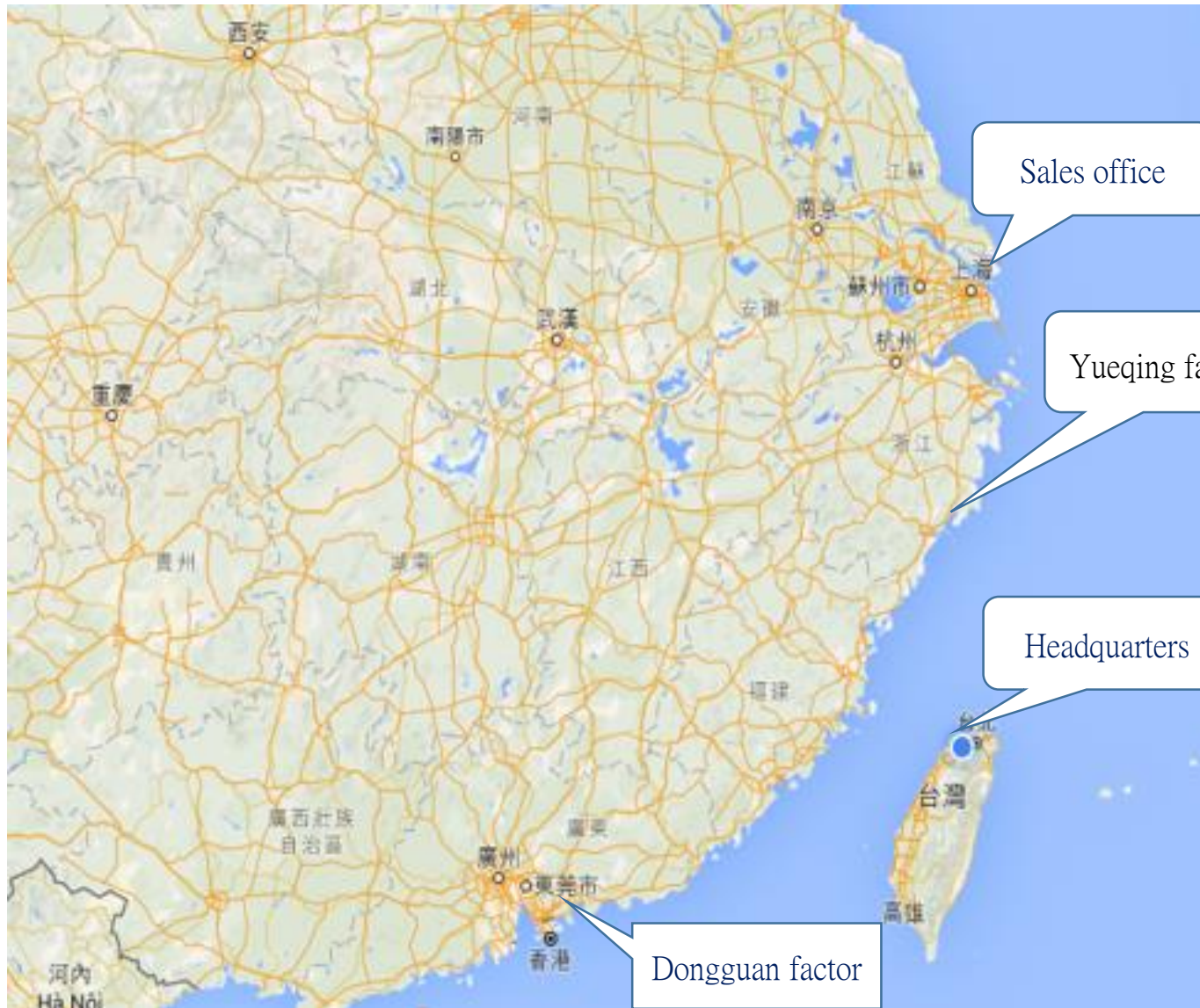


EASYCONN is a professional manufacturer of electronic connectors. Founded in 2014, EASYCONN mainly serves customers in the electronics, telecommunications and other industries. We adhere to the business philosophy of Quality, Efficiency, Responsibility, Sincerity, Continuity and Management. We are positioned as a professional product manufacturer and provide excellent service that exceed customer expectations and achieve excellent business goals.

Companies adhere to the "quality first, customer first, continuous improvement" quality policy, the implementation of comprehensive quality control, and has a complete experimental verification facilities. As the basis of good quality, win the trust of customers and continuous improvement to meet the requirements of customers, has now become Quanta, Inventec , Asus, Wistron, Toshiba, Molex and other first-class customer supply Quote.

We can offer coordinated services including products development ;manufacturing. With professional technical and management team, we offer the best service and products. We have followed the operation principle of quality gain survival;technique gain development and market-oriented;service-oriented that we hope to cooperate with all walks of life and create the brilliancy together.

Basic Information



Songjiang District of Shanghai Mingle Road on the 8th of a building

Main product: Main operations. Sales



Yueqing City, Zhejiang Province
Hongqiao Town West Industrial Area F-6

Main product: audio jack, dc jack ,RCA,



No.15, Lane 165, Dingxing Road,
Guishan , Taoyuan City

Main product: Main operations.
Sales and R & D



Dongguan Changan Shatou sand
area John Quan Technology
Park, Building D, 8th floor

Main product: RJ45 ,HDMI,RF

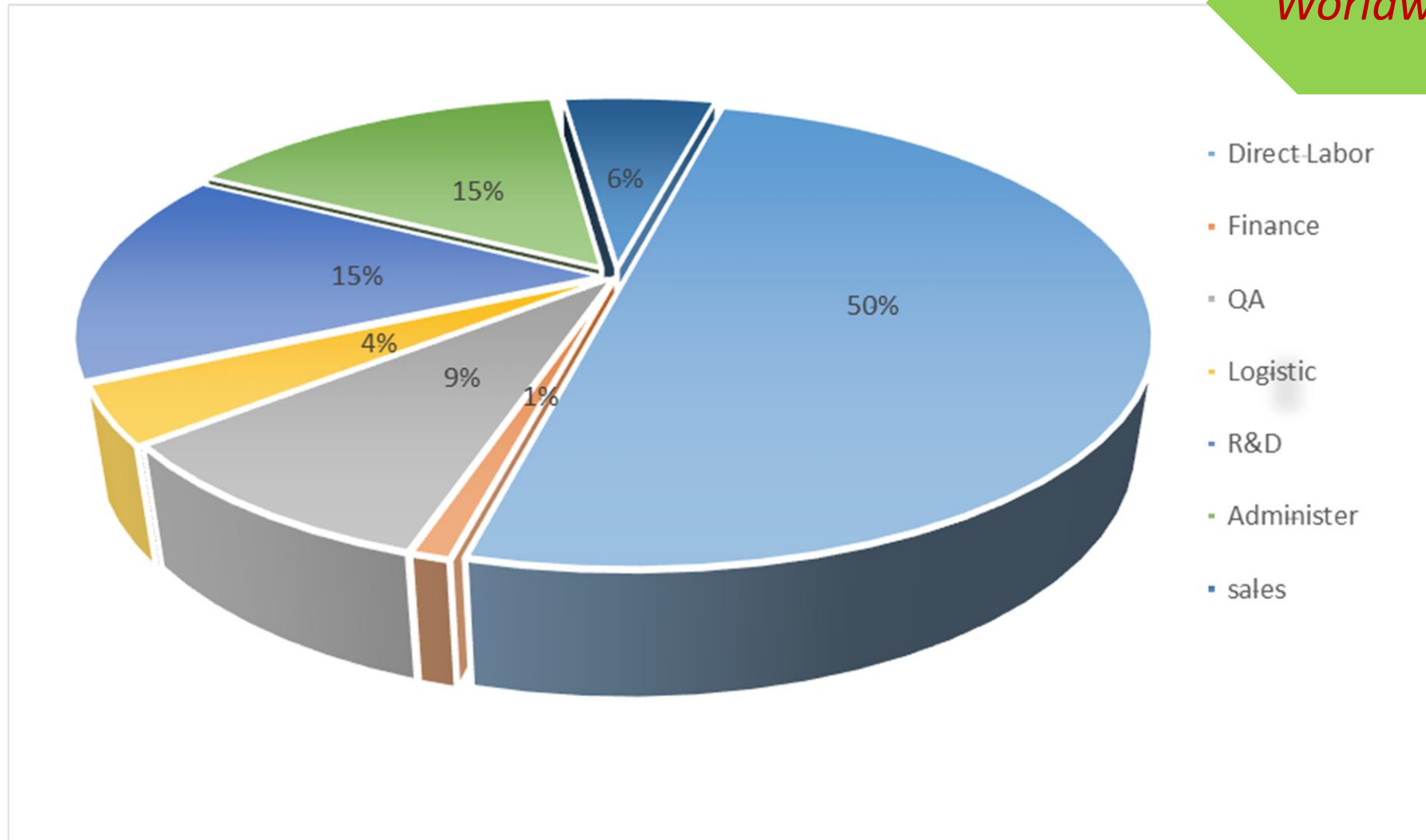
Company Overview



Company	EASYCONN ELECTRONICS
Headquarters	Taiwan
Founded	August, 2014
Capital	US\$ 3 Million
Employees	136
Products	DC & PHONE JACK Products RF Switch, RF Coaxial, RJ45, DC IN, Other Conn.

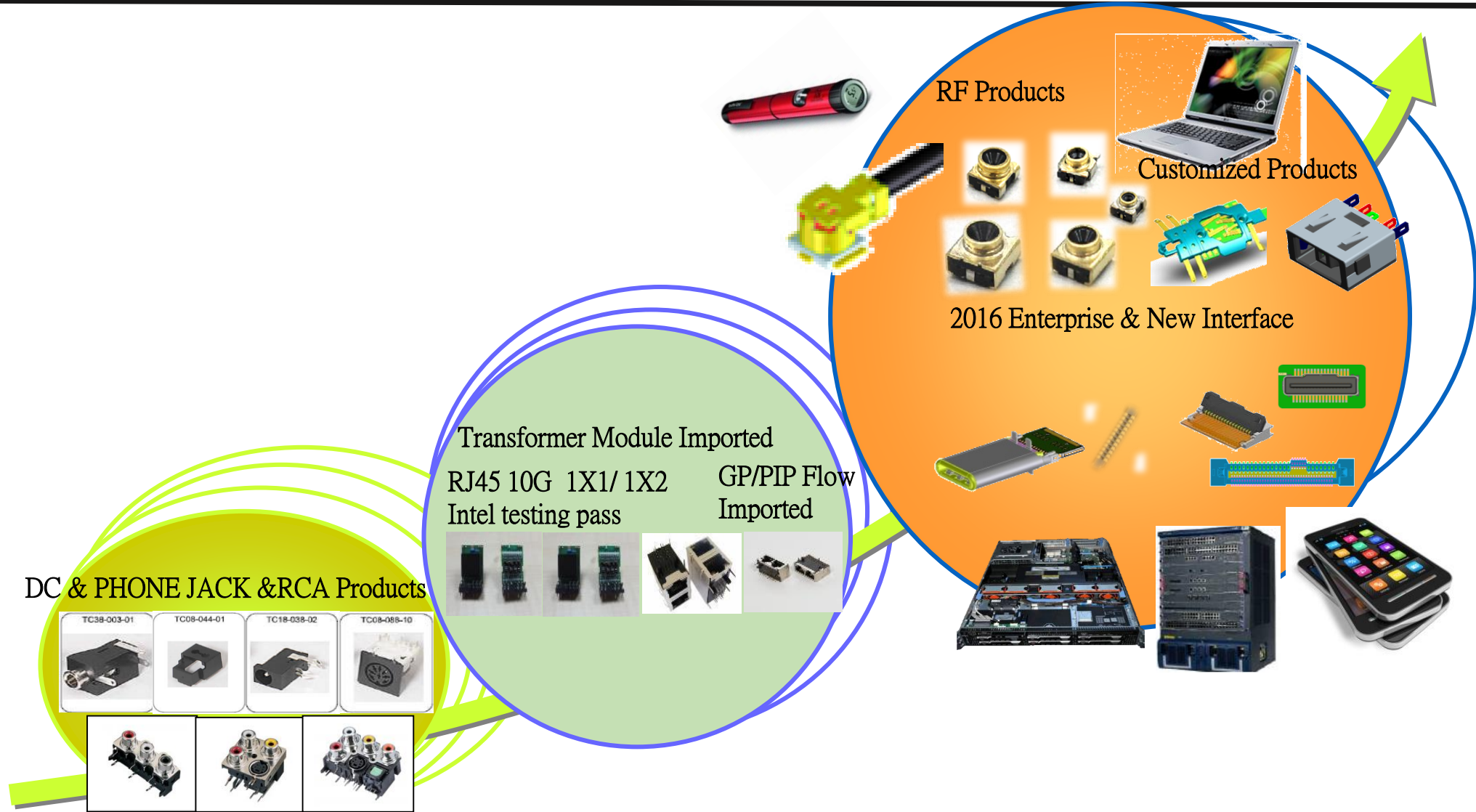
Worldwide Human Resources

Worldwide employees : 136



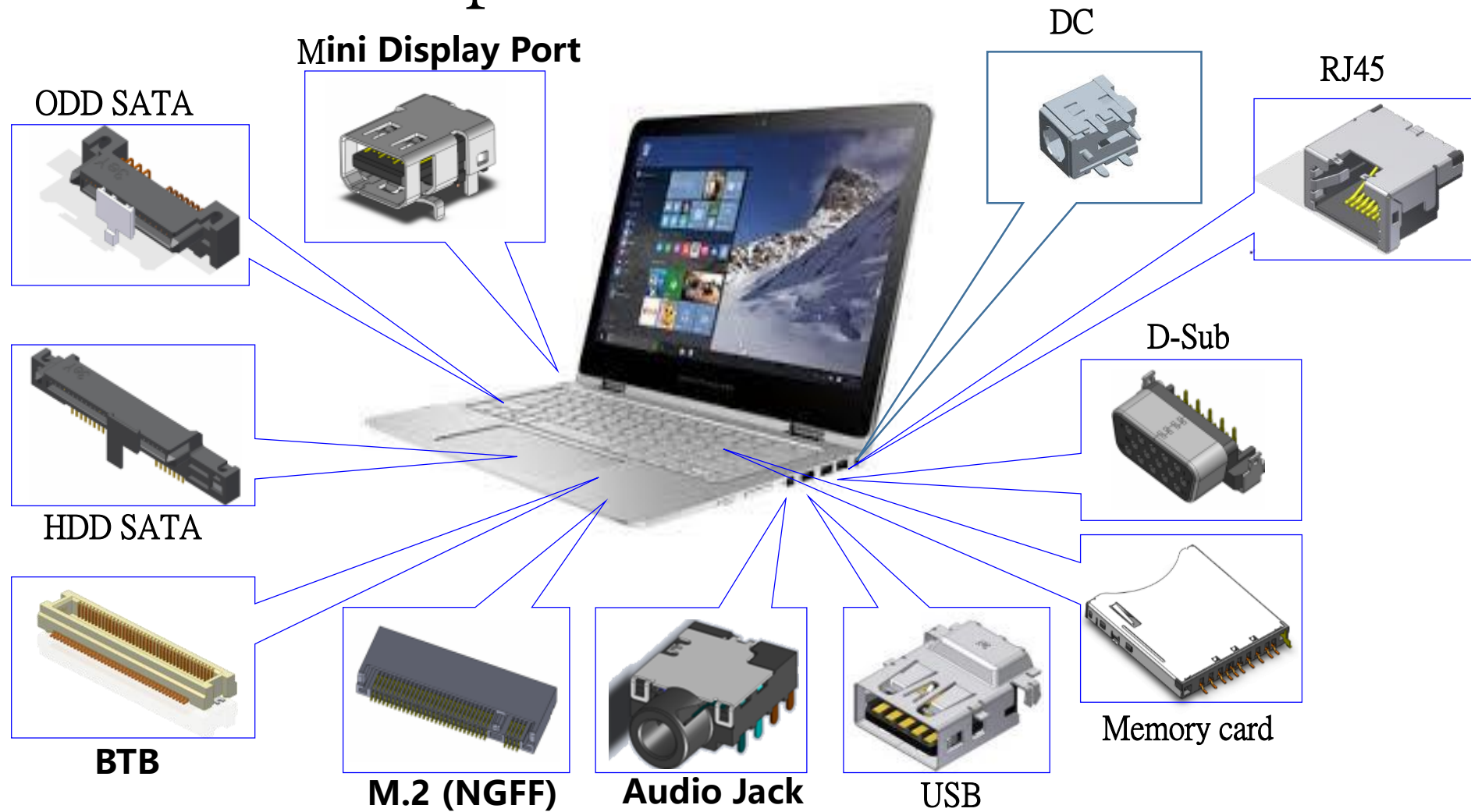
- Direct Labor
- Finance
- QA
- Logistic
- R&D
- Administer
- sales

Product Roadmap



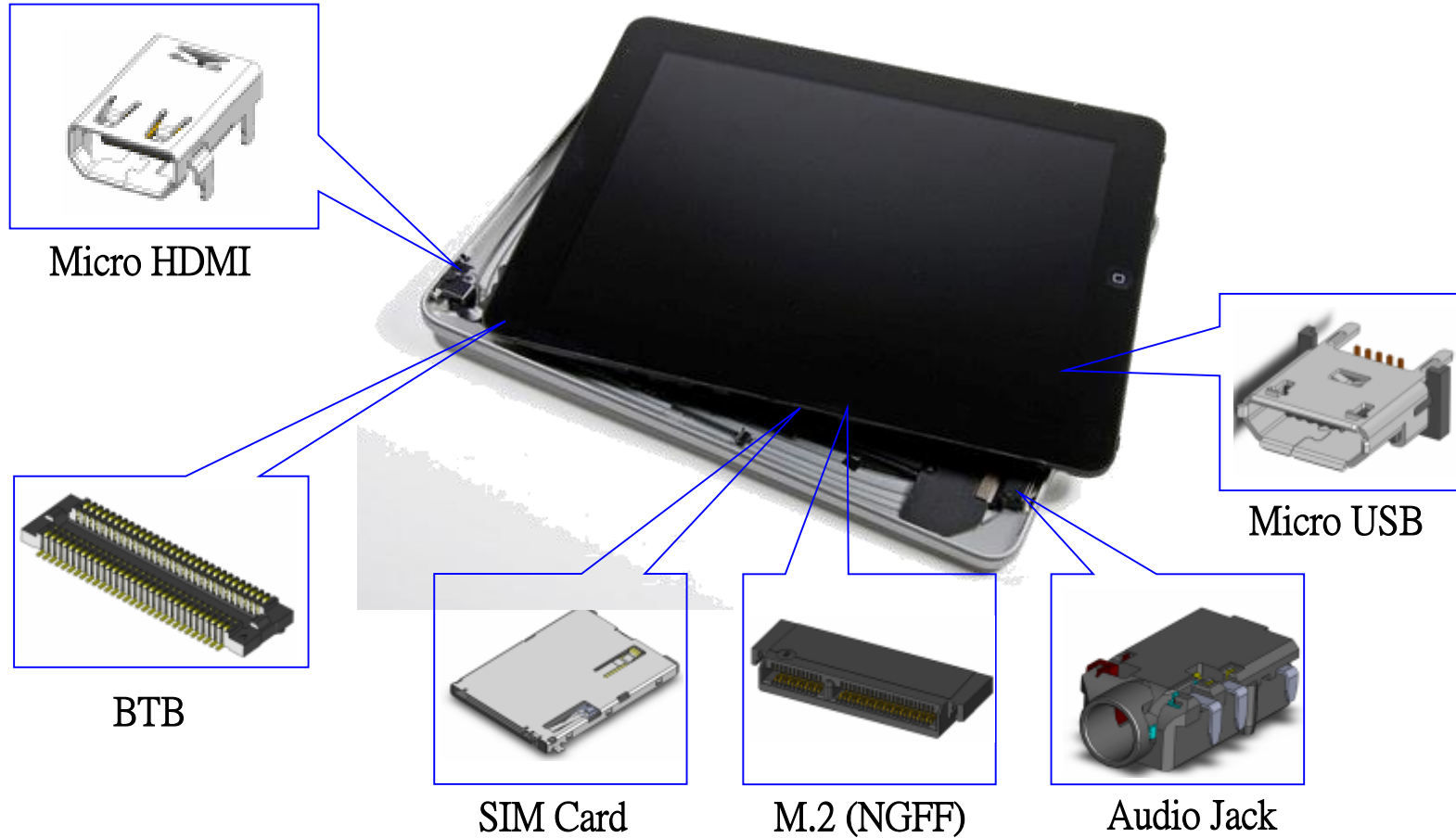
Main Product

Computer connector



Main Product

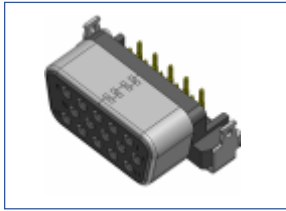
Handheld connector



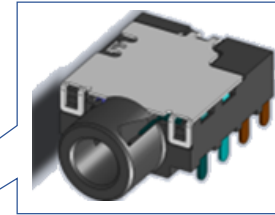
Main Product

TV connector

D-Sub



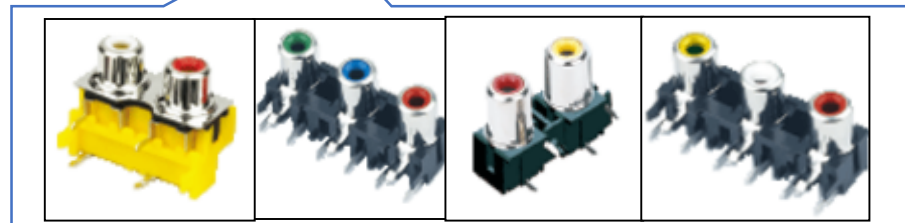
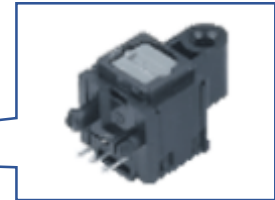
Audio Jack



HDMI

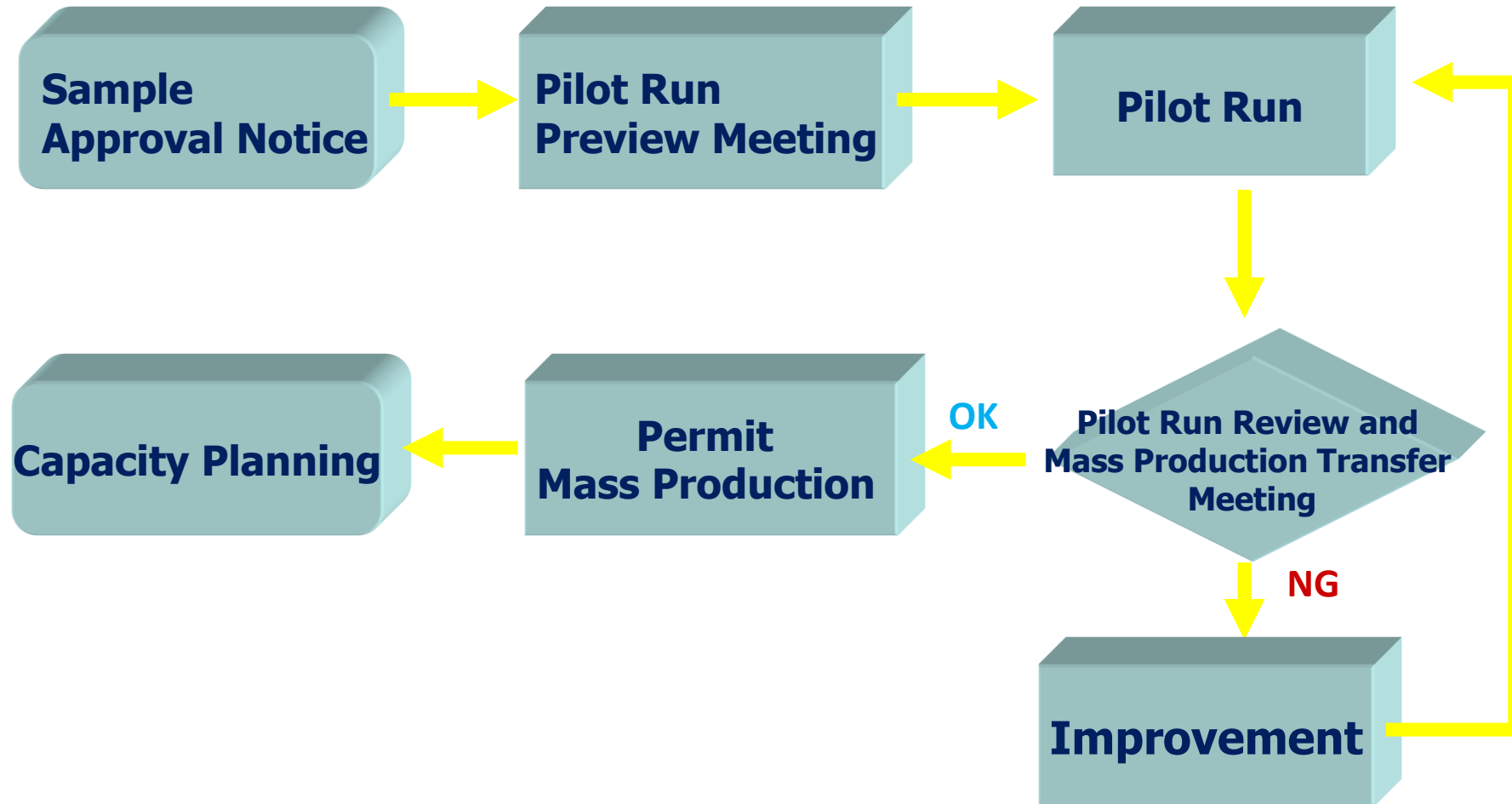


Fiber Socket



RCA Jack

New Product Permission Mass Production

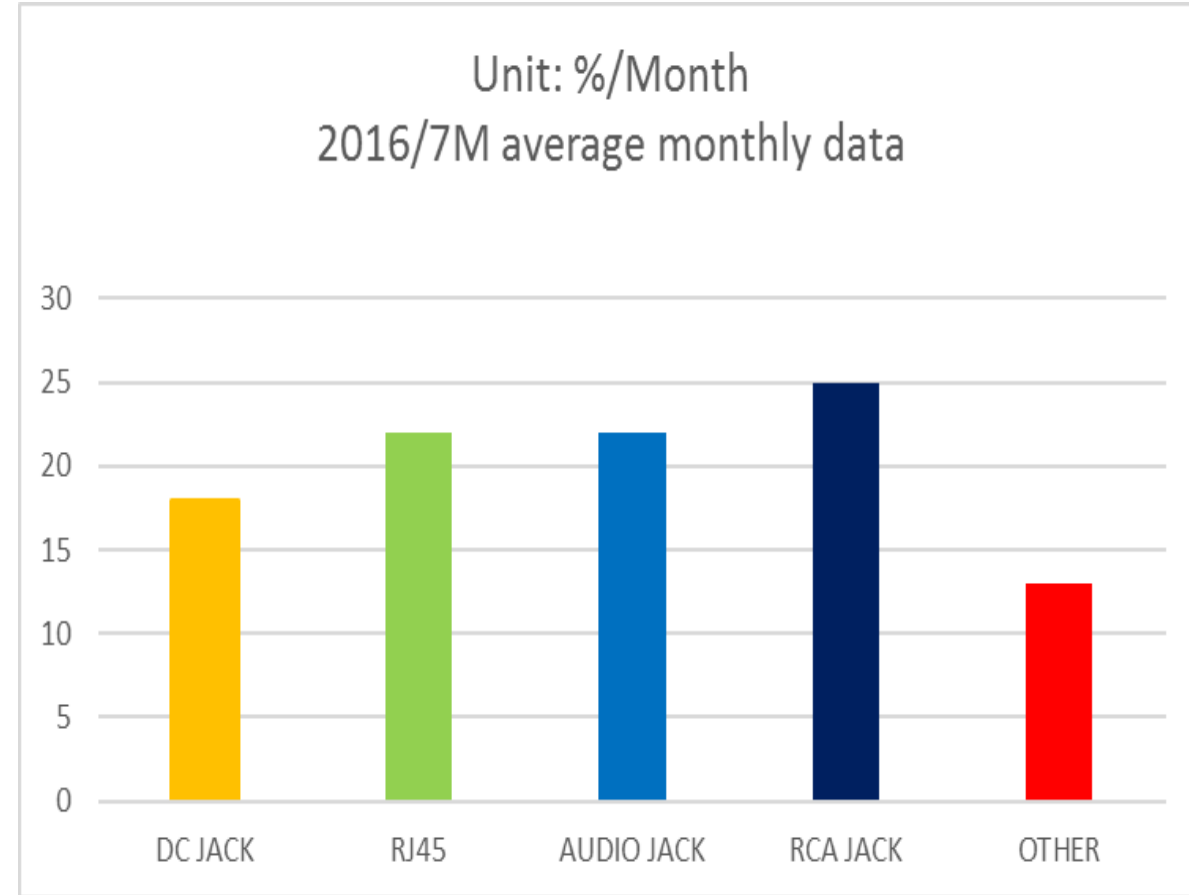


Molding Line

Machine Q'ty before Jan 2016 : 15 Sets.



Production Line



Production Line:5 line for max production

Capacity : 1shift 1.5KKports/M

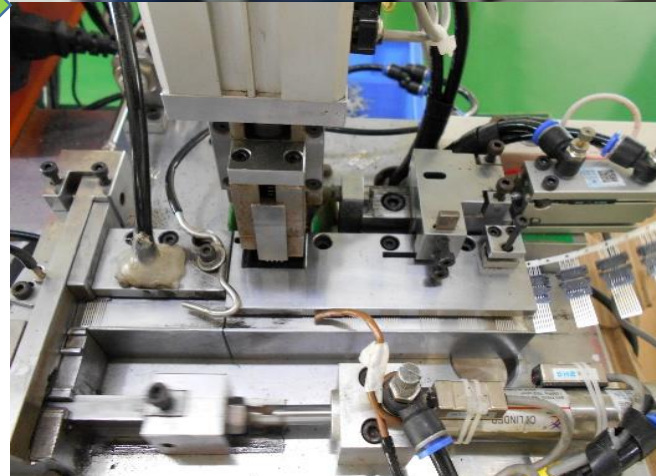
2shift 1.2KKports/M

100% testing QC

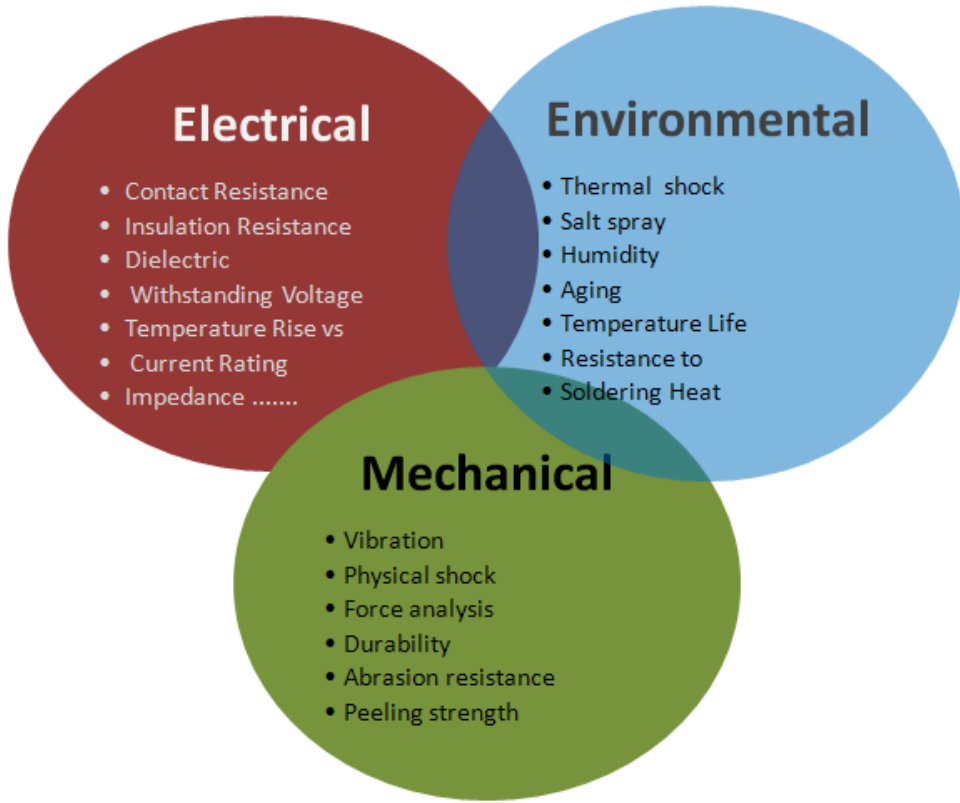
Auto Assembly Production Line

Auto Inserted

Auto Spot Soldering



Lab Equipment



Push & Pull Force Test



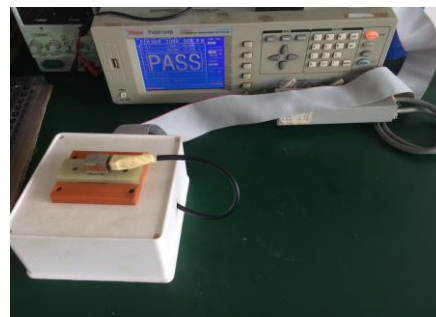
High Temp. Oven



Salt Spray Test



CCD Measure



Filtering Test



Auto Plug Test



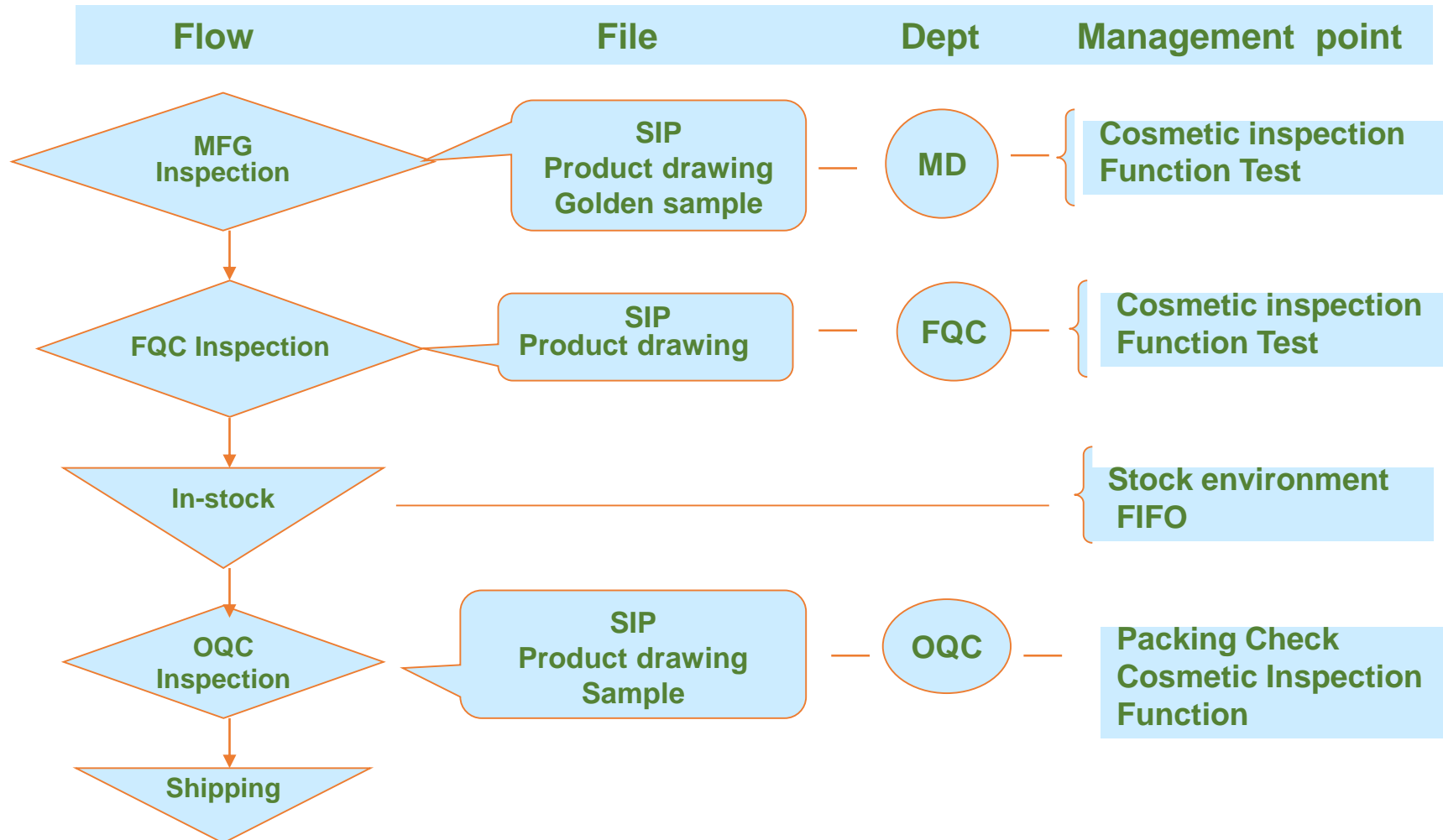
Frequency Measure



Thermo reflow Oven

Quality Assurance

System Flow Chart



Certification





We are looking forward to being your partner.

Thanks.