

---

## Infrared Gas Burners

---



**CATALOG**

Shiuh Kwang Infrared Enterprise Co.,Ltd.



# Infrared Gas Burners Features

Feature 1

## Direct heat

Heat from the infrared burner does not interfere with air, but reflects onto an object directly.

Feature 2

## Infrared emission

Over 70% of gas energy can be converted into the effective infrared wavelength.

Feature 3

## Use at different angles

Flame can be directed in different angles.

Feature 4

## Economical equipment

When using heat radiation you do not need a pressure fan and heat exchanger.

Feature 5

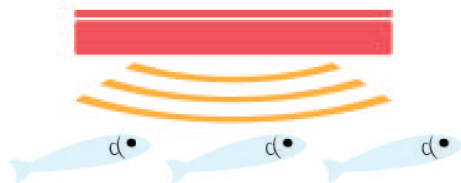
## Sanitation

The infrared burner does not create dust.

## Application

### Restaurants

Seafood, Meat, Barbecue, Pizza, Vegetable



### Food industry

Eels, Fish, Fresh vegetable process, Cookies, Meats, Squids, Dried laver, Flour, Process of food, Tea, Baking.



### Dry Coating Industry

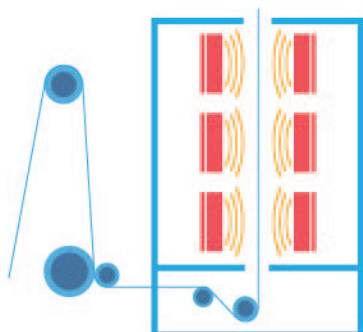
Liquid, Powder apply, Forging apply, Acid pickling braising, Related to Metal, Wood, Plastics dry and heat

### Fiber industry

Dyeing, Stamp, Latex mat, Electronic accessories, Unique fiber cloth or board

### Paper-making industry

All kinds of paper, Reprocessed paper, Unique paper, To assist heating and increase productivity



### Husbandry

Chickens, Pigs, Cattles keep warm, Grain dried

### Latex gloves

PVC synthesized of dry shaping

### Ceramic industry

Drying model, Glaze braising

# Infrared Gas Burners Component

## Burner Spare Parts

Spare Parts for whole auto controlling system, necessary parts for burner system, it includes ceramic plates, pulse igniter, solenoid valve, ignition pin, temperature cabinet, regulator, pressure gauge etc.

## Infrared Gas Burner

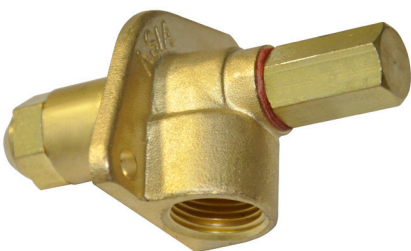
A-802



### Ignition Pin-3

1. Sensitive ignition
2. Good quality stability
3. Good resistance to high temperature performance
4. Three-needle frame type

### ▼ Brass Nozzle



### ▼ Tube



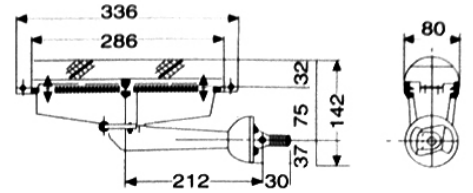
### ▼ Ignition Pin-3



### A-402



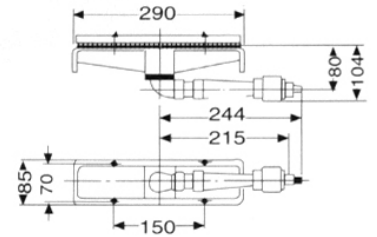
Consumption/LPG: 0.11 kg/hr  
 Consumption/NG: 0.15 m<sup>3</sup>/hr  
 Heat: 1320 kcal/hr  
 Weight: 2.6 kg  
 Connection: 1/8"  
 Quantity of ceramic plates: 2 (S)



### A-403



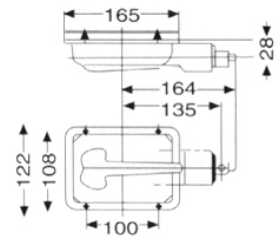
Consumption/LPG: 0.11 kg/hr  
 Consumption/NG: 0.15 m<sup>3</sup>/hr  
 Heat: 1320 kcal/hr  
 Weight: 2.9 kg  
 Connection: 1/8"  
 Quantity of ceramic plates: 2 (S)



### A-406



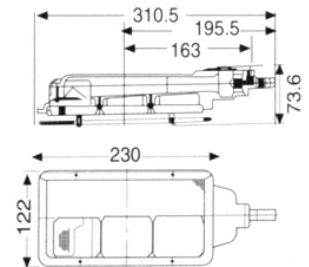
Consumption/LPG: 0.11 kg/hr  
 Consumption/NG: 0.15 m<sup>3</sup>/hr  
 Heat: 1320 kcal/hr  
 Weight: 1.9 kg  
 Connection: 1/8"  
 Quantity of ceramic plates: 1 (L)



### A-601



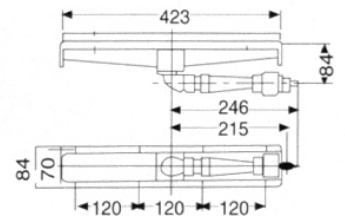
Consumption/LPG: 0.17 kg/hr  
 Consumption/NG: 0.23 m<sup>3</sup>/hr  
 Heat: 2040 kcal/hr  
 Weight: 2.5 kg  
 Connection: 1/8"  
 Quantity of ceramic plates: 1.5 (L)



### A-602



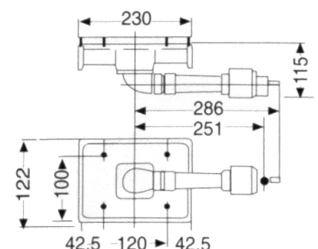
Consumption/LPG: 0.17 kg/hr  
 Consumption/NG: 0.23 m<sup>3</sup>/hr  
 Heat: 2040 kcal/hr  
 Weight: 3.8 kg  
 Connection: 1/8" or 3/8"  
 Quantity of ceramic plates: 3 (S)



### A-606



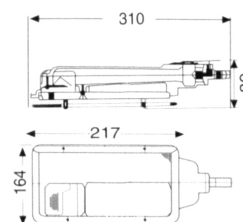
Consumption/LPG: 0.17 kg/hr  
 Consumption/NG: 0.23 m<sup>3</sup>/hr  
 Heat: 2040 kcal/hr  
 Weight: 2.5 kg  
 Connection: 1/8"  
 Quantity of ceramic plates: 1.5 (L)



### A-801



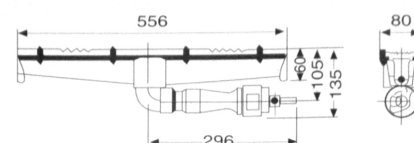
Consumption/LPG: 0.22 kg/hr  
 Consumption/NG: 0.30 m<sup>3</sup>/hr  
 Heat: 2640 kcal/hr  
 Weight: 3.8 kg  
 Connection: 3/8"  
 Quantity of ceramic plates: 2 (L)



### A-802



Consumption/LPG: 0.22 kg/hr  
 Consumption/NG: 0.30 m<sup>3</sup>/hr  
 Heat: 2640 kcal/hr  
 Weight: 5.8 kg  
 Connection: 3/8"  
 Quantity of ceramic plates: 4 (S)

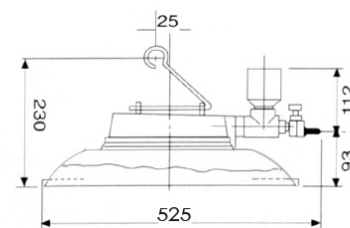


### A-811

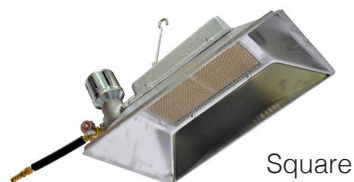


Circle

Consumption/LPG: 0.22 kg/hr  
 Consumption/NG: 0.30 m<sup>3</sup>/hr  
 Heat: 2640 kcal/hr  
 Weight: 4.5 kg  
 Connection: single tube  
 Quantity of ceramic plates: 2 (L)

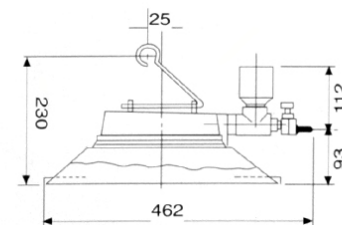


### A-811



Square

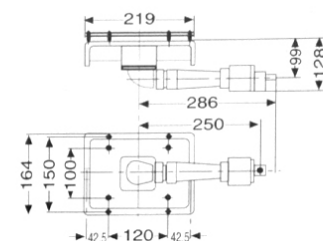
Consumption/LPG: 0.22 kg/hr  
 Consumption/NG: 0.30 m<sup>3</sup>/hr  
 Heat: 2640 kcal/hr  
 Weight: 4.25 kg  
 Connection: single tube  
 Quantity of ceramic plates: 2 (L)



### A-822



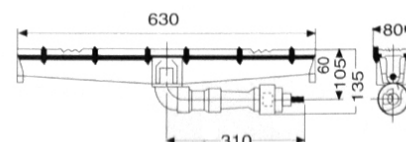
Consumption/LPG: 0.22 kg/hr  
 Consumption/NG: 0.30 m<sup>3</sup>/hr  
 Heat: 2640 kcal/hr  
 Weight: 4.5 kg  
 Connection: 3/8"  
 Quantity of ceramic plates: 2 (L)



### A-902



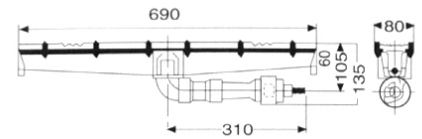
Consumption/LPG: 0.25 kg/hr  
 Consumption/NG: 0.34 m<sup>3</sup>/hr  
 Heat: 3000 kcal/hr  
 Weight: 6.4 kg  
 Connection: 3/8"  
 Quantity of ceramic plates: 4.5 (S)



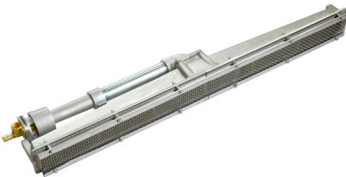
## A-1002



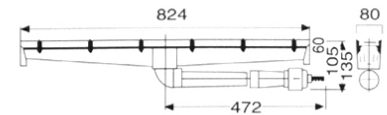
Consumption/LPG: 0.28 kg/hr  
Consumption/NG: 0.38 m<sup>3</sup>/hr  
Heat: 3360 kcal/hr  
Weight: 6.85 kg  
Connection: 3/8"  
Quantity of ceramic plates: 5 (S)



## A-1202



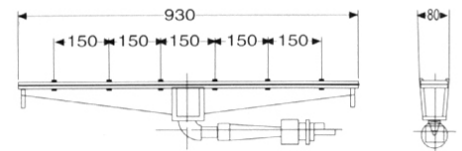
Consumption/LPG: 0.34 kg/hr  
Consumption/NG: 0.46 m<sup>3</sup>/hr  
Heat: 4080 kcal/hr  
Weight: 7.6 kg  
Connection: 3/8"  
Quantity of ceramic plates: 6 (S)



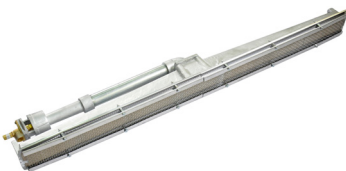
## A-1302



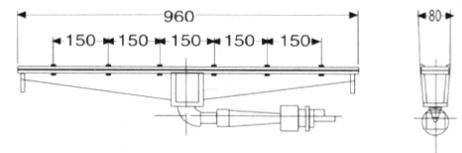
Consumption/LPG: 0.37 kg/hr  
Consumption/NG: 0.5 m<sup>3</sup>/hr  
Heat: 4440 kcal/hr  
Weight: 8.2 kg  
Connection: 3/8"  
Quantity of ceramic plates: 6.5 (S)



## A-1402



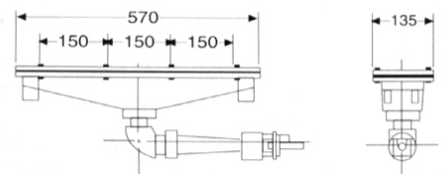
Consumption/LPG: 0.39 kg/hr  
Consumption/NG: 0.53 m<sup>3</sup>/hr  
Heat: 4680 kcal/hr  
Weight: 8.95 kg  
Connection: 3/8"  
Quantity of ceramic plates: 7 (S)



## A-1602



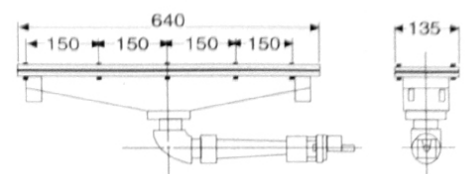
Consumption/LPG: 0.45 kg/hr  
Consumption/NG: 0.6 m<sup>3</sup>/hr  
Heat: 5400 kcal/hr  
Weight: 8 kg  
Connection: 3/8"  
Quantity of ceramic plates: 4 (L)



## A-1802



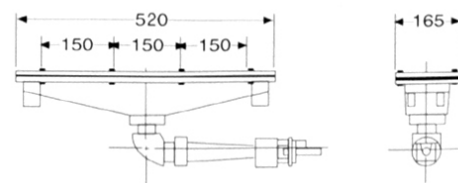
Consumption/LPG: 0.51 kg/hr  
Consumption/NG: 0.69 m<sup>3</sup>/hr  
Heat: 6120 kcal/hr  
Weight: 9.1 kg  
Connection: 3/8"  
Quantity of ceramic plates: 4.5 (L)



### A-2001



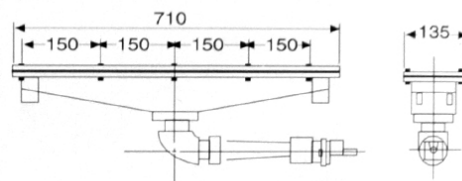
Consumption/LPG: 0.55 kg/hr  
 Consumption/NG: 0.74 m<sup>3</sup>/hr  
 Heat: 6600 kcal/hr  
 Weight: 9.6 kg  
 Connection: 3/8"  
 Quantity of ceramic plates: 5 (L)



### A-2002



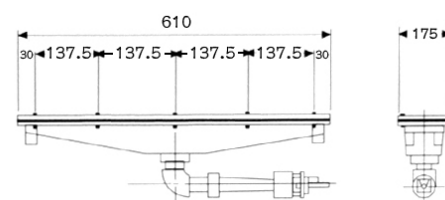
Consumption/LPG: 0.55 kg/hr  
 Consumption/NG: 0.74 m<sup>3</sup>/hr  
 Heat: 6600 kcal/hr  
 Weight: 11.15 kg  
 Connection: 3/8"  
 Quantity of ceramic plates: 5 (L)



### A-2401



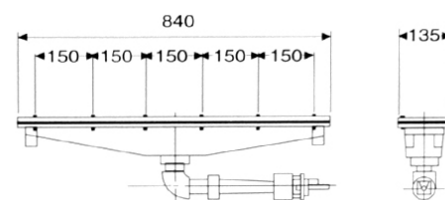
Consumption/LPG: 0.68 kg/hr  
 Consumption/NG: 0.92 m<sup>3</sup>/hr  
 Heat: 8160 kcal/hr  
 Weight: 10.5 kg  
 Connection: 3/4"  
 Quantity of ceramic plates: 4 (L)



### A-2402



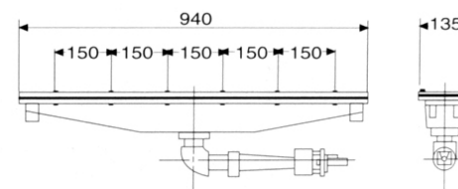
Consumption/LPG: 0.68 kg/hr  
 Consumption/NG: 0.92 m<sup>3</sup>/hr  
 Heat: 8160 kcal/hr  
 Weight: 11.7 kg  
 Connection: 3/4"  
 Quantity of ceramic plates: 6 (L)



### A-2602



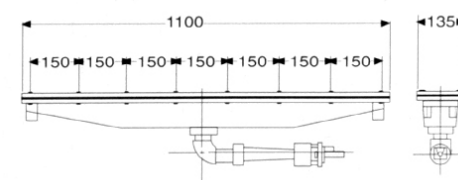
Consumption/LPG: 0.74 kg/hr  
 Consumption/NG: 1.0 m<sup>3</sup>/hr  
 Heat: 8880 kcal/hr  
 Weight: 13 kg  
 Connection: 3/8"  
 Quantity of ceramic plates: 6.5 (L)



### A-3200



Consumption/LPG: 0.9 kg/hr  
 Consumption/NG: 1.21 m<sup>3</sup>/hr  
 Heat: 10800 kcal/hr  
 Weight: 14.5 kg  
 Connection: 3/8"  
 Quantity of ceramic plates: 8 (L)





## **The properties of infrared gas burner**

Infrared head burner is taking the primary air for complete combustion, and transmit the heat by radiation about 45percent of energy transmit to be infrared. This kind of infrared which the length of waves (2 to 6  $\mu\text{m}$ ) will be absorbable by high molecule. The special strong absorbent is the best way of energy saving, also it is more cleanliness and hygiene. The above is the best heating and drying operation to promote your products quality.

## **The notes when using the infrared gas burner**

1. Please install the low pressure gas regulator when operating. That of 200-400mm-HO(Aq) is more suitable, because high pressure regulator will cause converse combustion. Low pressure regulator will not ignite or cause low efficiency.
2. When using liquefied petroleum gas (LPG) or natural gas (NG). Which in spite of the different pressures and contents, the nozzles and ceramic plates are also different. Please make sure it and tell us.
3. If you have any questions about the operations and assembly of infrared gas burner, please feel free to contact us. Many thanks



TEL: +886-37-611246~8    ADD: No. 29, Kugn Yeh Rd.,  
Fax: +886-37-611249    Lu Jwu Vil., TouFen Township,  
E-mail: asia@asiae168.com.tw    Miaoli County, Taiwan, R.O.C.



[www.asiae168.com.tw](http://www.asiae168.com.tw)