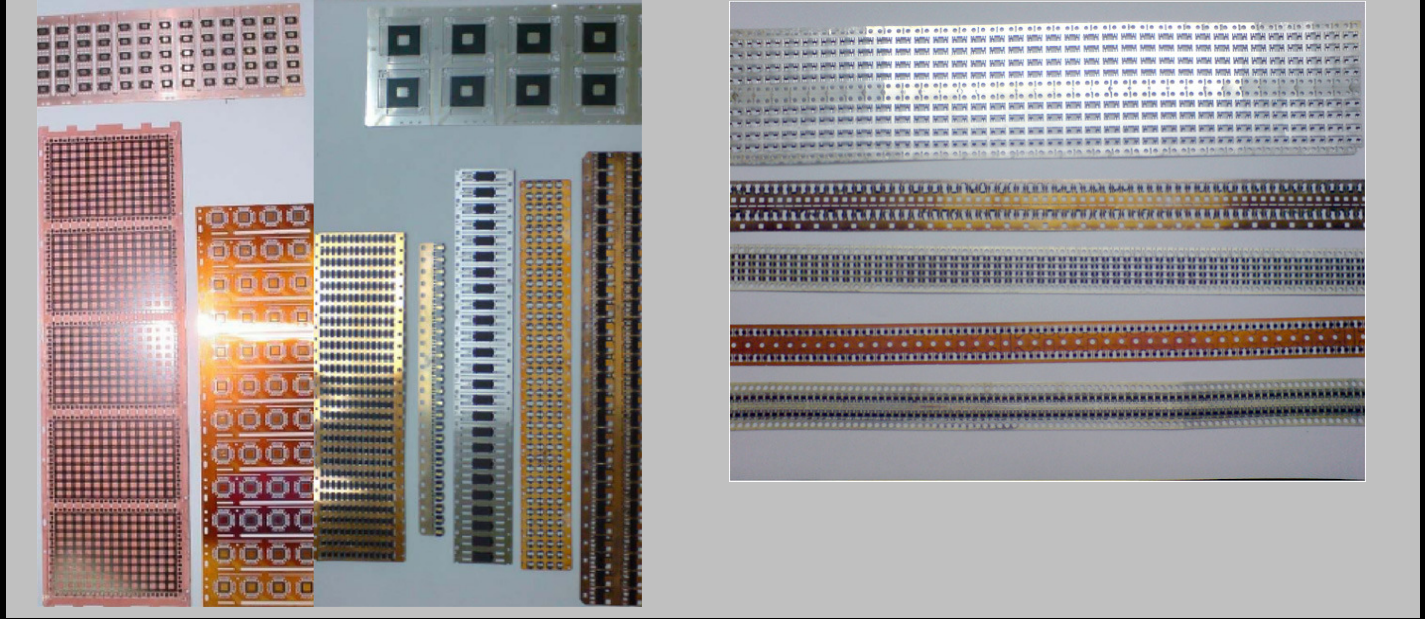
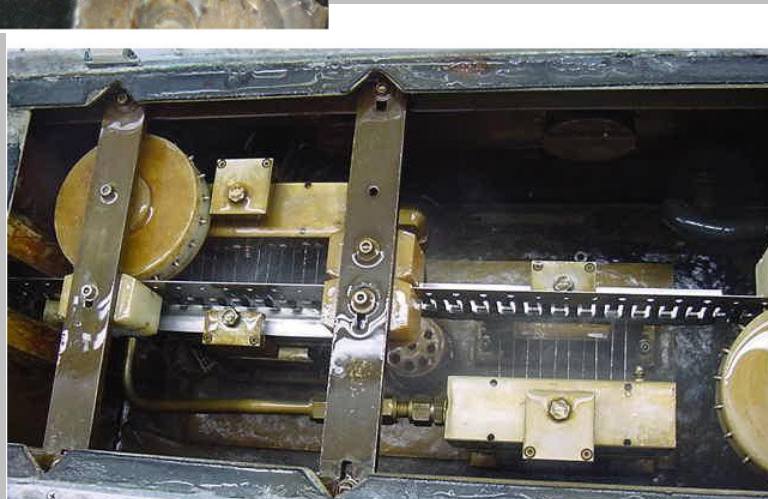
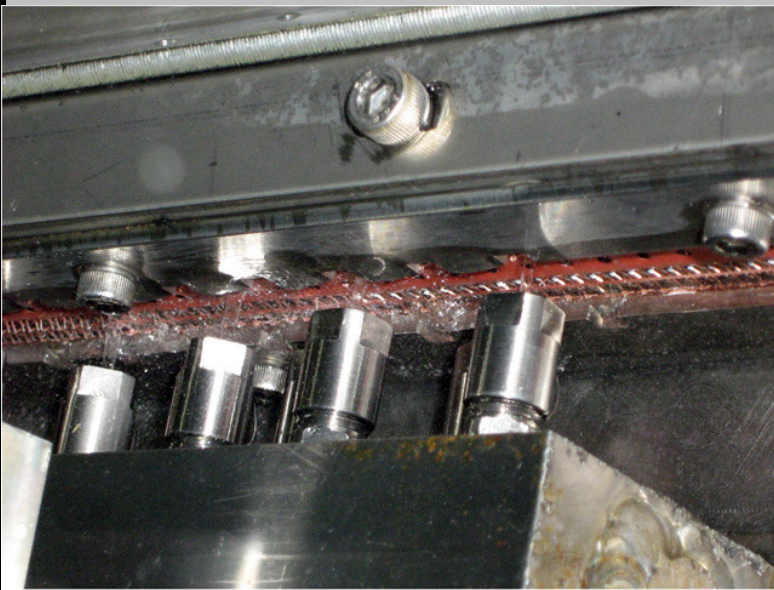


高壓水噴射系統及噴咀 產品清洗&去毛刺及範例:



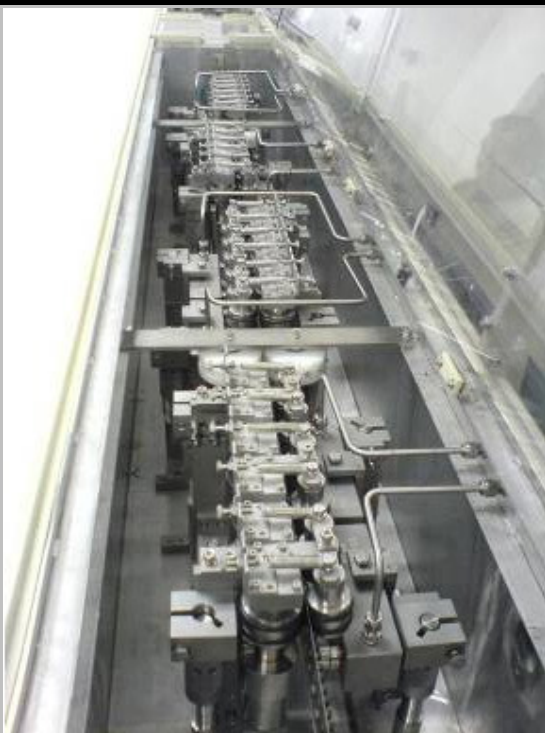
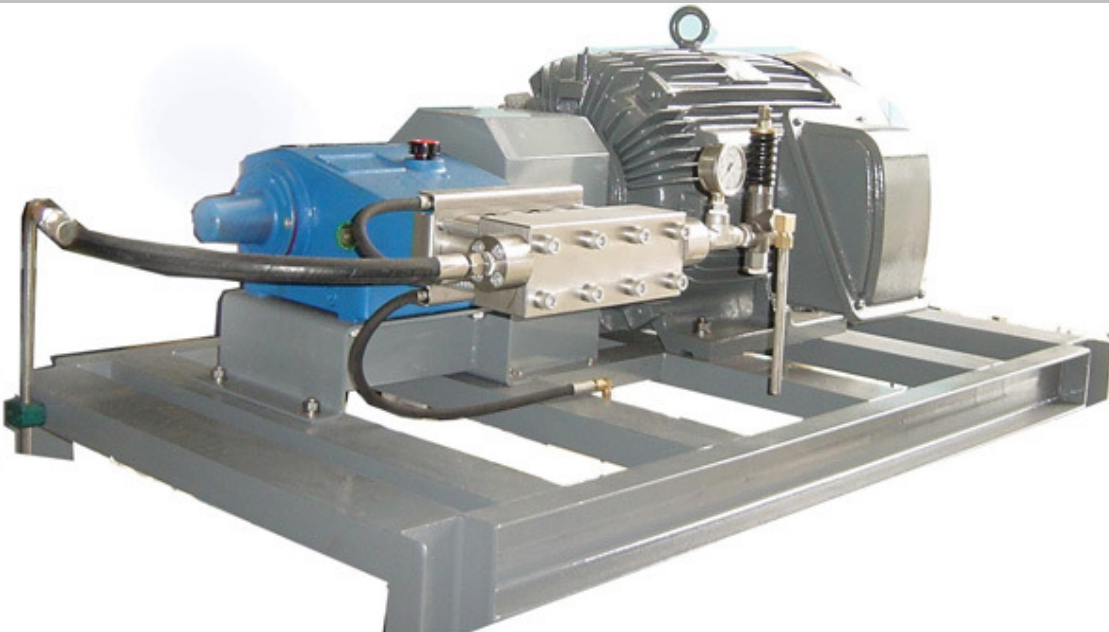
範例



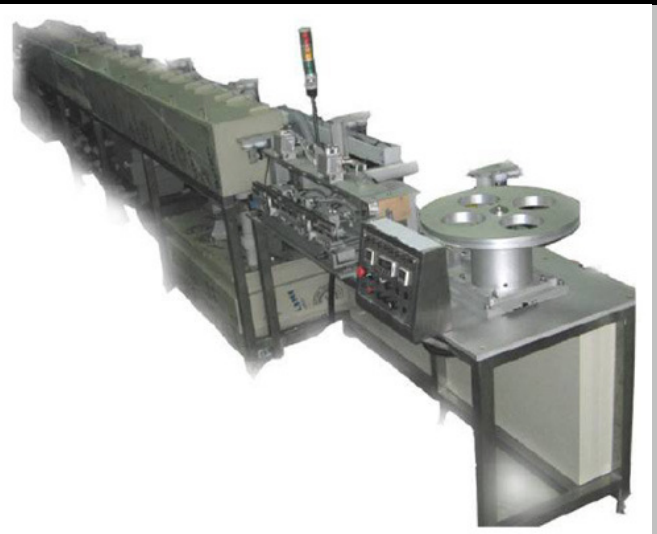
高壓水噴射系統

High performance pumps design for all pressures & flows

High quality material that made to with stand high pressure.



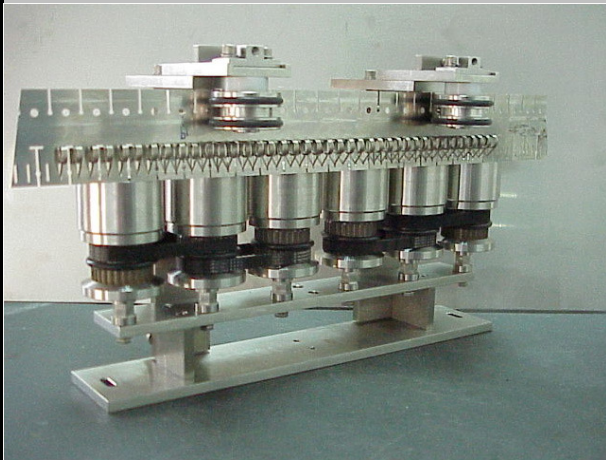
Inline retrofit deflashing
to your exiting plating lines



off line deflashing system with/without ED
that meet all your deflashing needs

高壓水噴射系統用噴頭

Rollers for up to 35mm width products



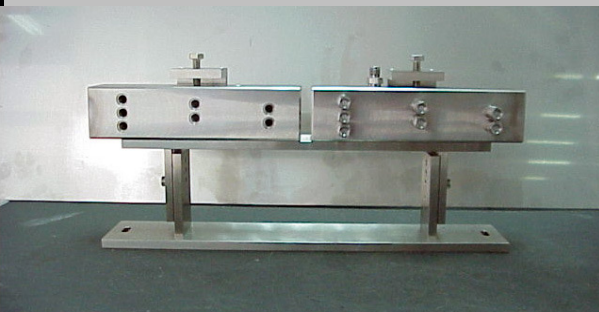
Rollers for up to 70mm width products



各式/各角度噴咀

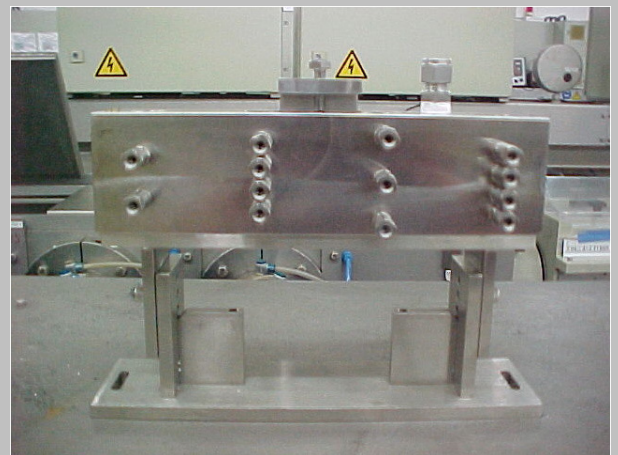


Nozzles manifold for up to 35mm width products



噴咀座,適用於35mm寬產品
採快速拆卸座,可方便快速更換各式各角度噴咀
以便配合清洗之產品

Nozzles manifold for up to 70mm width products



噴咀座,適用於70mm寬產品
採快速拆卸座,可方便快速更換各式各角度噴咀
以便配合清洗之產品

化學類:

Deflashing Chemical 去毛刺化學劑

詳細資料詳見

http://www.epomid.com.sg/Epomid_chemicals.html

Descaler 除垢劑

詳細資料詳見

http://www.epomid.com.sg/Epomid_chemicals_Descaler.html

Stripper 剝離劑

詳細資料詳見

http://www.epomid.com.sg/Epomid_chemicals_Stripers.html

Superior Flux 優良助焊劑

詳細資料詳見

http://www.epomid.com.sg/Epomid_chemicals_Flux.html



KING CHIN



金群股份有限公司

台北市中央北路2段333號1樓

TEL:886-2-28936205 FAX:886-2-28915450

www.kingchin.com.tw

營業項目:英國NUMATIC無塵室吸塵機, 吸水機, 全自動洗地機, 插電/引擎式高壓清洗機, RCM掃地機, 水刀, 泵浦, 日本OSAWA氣動式吸塵機, 吸塵除塵槍.