



HongKong Veidoo Technology Co., Ltd  
ShenZhen Veidoo Digital Vision Co., Ltd

[www.veidoo.com](http://www.veidoo.com)

2013.04



# Company Brief Introduction

**Veidoo** [www.veidoo.com](http://www.veidoo.com)  
Shenzhen Veidoo Digital Vision Co.,Ltd



Shenzhen Veidoo Digital Vision Co.,Ltd . Was founded Shenzhen, August, 2008. A leading factory which is focusing on developing & designing & manufacturing & selling Tablet PCs and smart Android TV Dongles And related communications electronic products.

Combined with CaiHuang Group's manufacturing capacity, we can offer innovative features, excellent quality and low costs products. We pride ourselves on providing professional value-added services for global markets.

All of the key processes for quality control are performed according to ISO9000:2000, ISO14001:2004, CE, FCC, CCC and RoHS standards.

HongKong Veidoo Technology Co., Ltd  
ShenZhen Veidoo Digital Vision Co., Ltd

Address: 7F, Caihuang Building, 6th, Qingning Road  
Qinghu Village, LongHua, ShenZhen

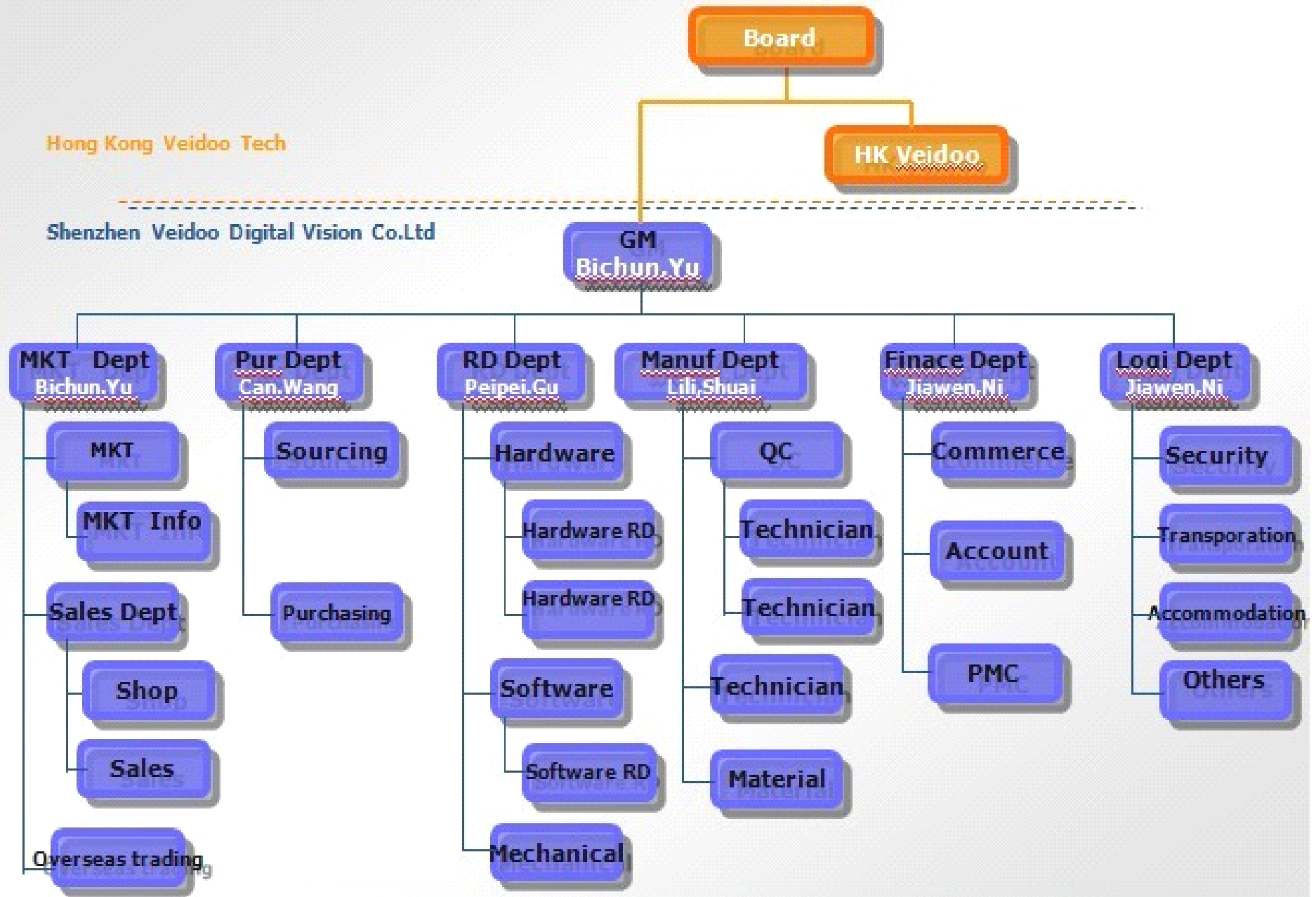
**Tel:** 0755-83717358 ext 830    **Fax:** 0755-83717356  
**Contact:** Marcus Zhang    **Mobile:** 86-13058048977  
**Email:** [marcus.zhang@veidoo.com](mailto:marcus.zhang@veidoo.com)  
**Skype:** marcus.veidoo  
**QQ:** 1191546840

Web: [www.veidoo.com](http://www.veidoo.com)

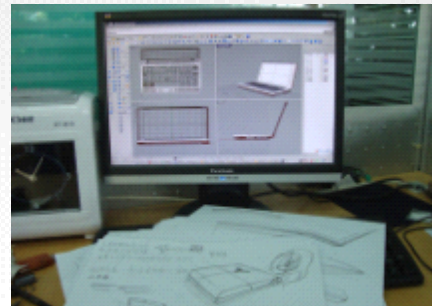
# Company Structure

Hong Kong Veidoo Tech

Shenzhen Veidoo Digital Vision Co.Ltd



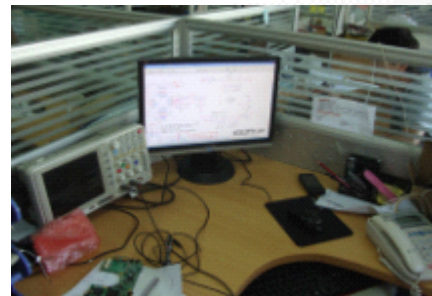
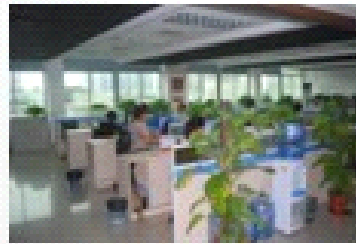
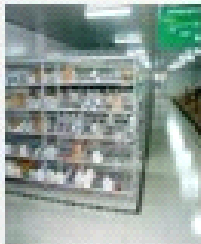
# Factory and R&D show



Industry design



Mechanical design



Electronic design



PCB design

A factory with more than 4000 employees, 60 SMT Lines, 10 Assembly Lines contribute to 1 Trillion chips SMT and 2 Million sets assembly per month. The factory has been certified strictly to serve the top level brand customer like Epson, Canon, LG, Huawei, Philips.

A well experienced team from big companies like Bird, Foxconn, MiTek, can handle all the development phase of consumer electronics product. We are now supplying Tablet PC/Smart TV Box/Mini PC solution, semi-finished (PCBA), and whole product to different customers.

# Android TV:HD1 & HD2 & HD3



**HD1**



**HD2**



**HD3**

- >CPU: Boxchip A20, 1.2GHz, Cortex A7
- >OS: Android 4.2
- >512MB-1GB, 4GB-8GB (Nand Flash)
- >Micro SD/TF Card: Max 32GB
- >WIFI Standard
- >Interface: DC \*1, Mini USB \*1, USB Host\*1, micro SD/TF \*1, HDMI \*1
- >2.4G Wireless airmouse+keyboard

- >CPU: Boxchip A20, 1.2GHz, Cortex A7
- >OS: Android 4.2
- >1GB/8GB (Nand Flash)
- >Micro SD/TF Card: Max 32GB
- >WIFI Standard
- >Interface: DC \*1, Mini USB \*1, USB Host\*1, micro SD/TF\*1, HDMI\*1, AV Jack\*1, Audio Jack\*1
- >5.0MP Camera built in
- >DSP+ Echo cancelling + 3m hands free talk
- >2.4G Wireless airmouse+keyboard

- >CPU: Boxchip A10s, 1.2GHz, Cortex A8
- >OS: Android 4.0
- >512MB-1GB, 4GB-8GB (Nand Flash)
- >Micro SD/TF Card: Max 32GB
- >WIFI Standard
- >Interface: DC \*1, Mini USB \*1, USB Host\*1, micro SD/TF \*1, HDMI \*1
- >Support: 2.4G Wireless airmouse+keyboard

# HD1



LCD TV+HD2=Computer+On line-Cinema+Game Machine+Learning machine+HD Video conference System



CPU: Allwinner A20 1.2GHz  
RAM: 1GB  
ROM: 4-8GB  
OS: Android 4.2  
5.0MP Auto focus camera  
Dual MIC and advanced audio enhancement  
3m Hands free talking

**Surface ports:**

**HDMI:** Connect to HD LCD TV or LED Display or projector....

**AV:** Connect to CRT or projector. Even the old TV with CVBS or VGA port through corresponding cable.

**USB Host:** External U disk, mouse, Keyboard, LAN RJ45.....

**MINI USB:** Connect to computer, or through USB Hub change to the USB Host.

**Adaptor:** 5V/1A



Connect the HDMI & DC cable. Insert the 2.4g wireless mouse & keyboard. 1 minute, Your home CRT and LCD/LED TV can change to your 2nd computer



Attractive fixed support with rubber painting and shining painting, great visual image!

Design of elastic clip. Easy to install on any LCD TV or CRT.

Support DLNA, the user can share the photos or movies in mobile phone or tablet pc to the LCD TV or projector...

Support mobile phone control through software.

Scan the bar code of the commodity to check the wholesale price through the relevant Apps.

.....



# 7inch WiFi (Q7)



- > 7"capacitive multi-touch panel  
screen: 800\*480;
- >CPU: Allwinner A13 1.2GHz, Cortex-A 8
- >Andriod 4.0
- >512MB DDRIII,4GB (NAND FLASH)
- > 0.3mega pixels camera in front
- >0.3mega pixels camera in rear optional
- >Battery type Lithium-ion 1800--3000mAh

#### Remark:

- 1.Packing including: Unit Tablet,USB Cable, Charger, User Manul
- 2.0.3MP or 2.0MP Rear camera optional
- 3.8GB Optional

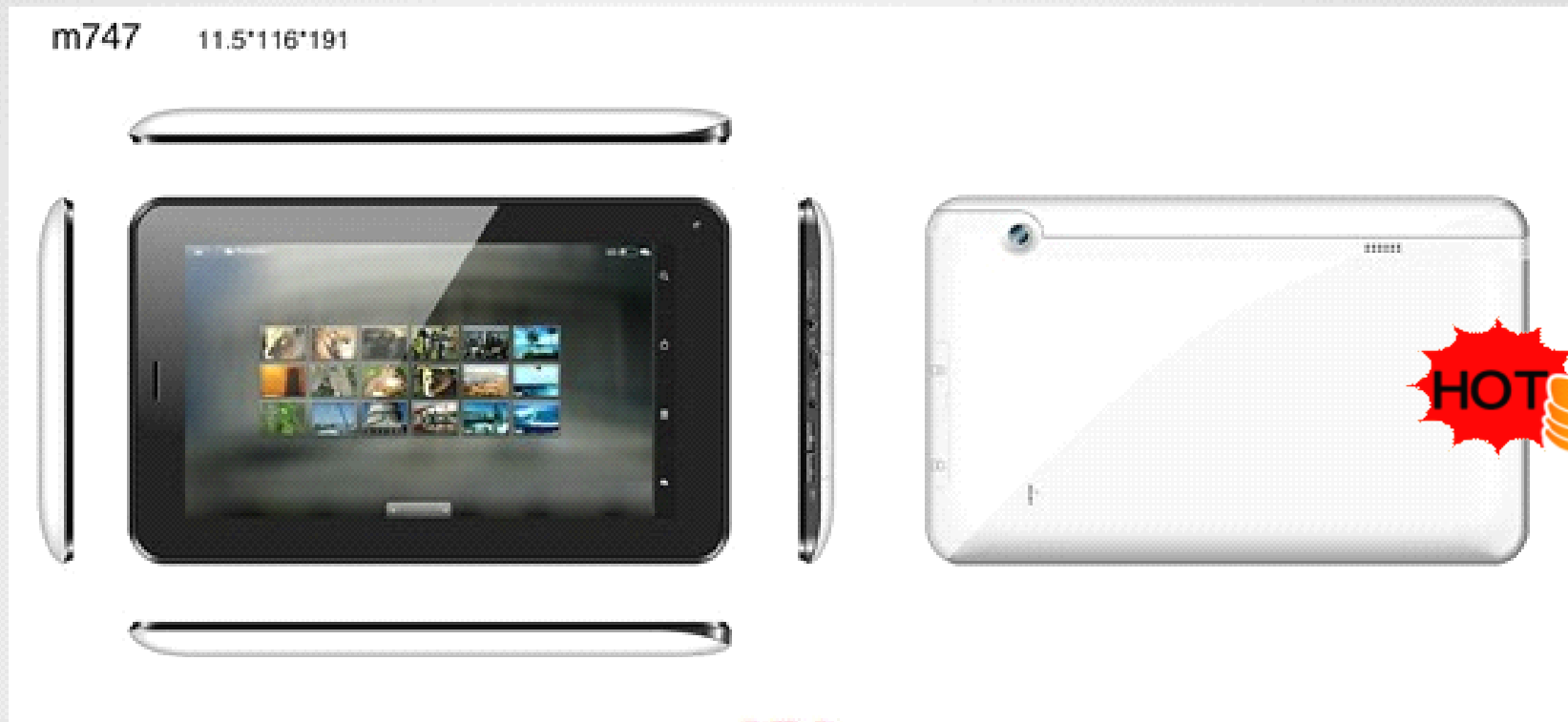
# 9inch WiFi (Q9)



- > 9"capacitive multi-touch panel  
screen: 800\*480;
- >CPU: Allwinner A13 1.2GHz, Cortex-A 8
- >Andriod 4.0
- >512MB DDRIII, 8GB (NAND FLASH)
- > 0.3mega pixels camera in front
- >0.3mega pixels camera in rear optional
- >Battery type Lithium-ion 3000 -6000mAh

Remark:  
Packing including: Unit Tablet,USB Cable,  
Charger, User Manul

# 7inch 2G GSM Calling (Q76)



**Q76**

- > 7"capacitive multi-touch panel  
screen: 800\*480;
- >CPU: Allwinner A13 1.5GHz, Cortex-A 8
- >Andriod 4.0
- >512MB DDRIII,4GB (NAND FLASH)
- > 0.3mega pixels camera in back and in front
- > 2G GSM Calling & Bluetooth
- >Battery type Lithium-ion 3000mAh

#### Remark:

1. Packing including: Unit Tablet, USB Cable, Charger, Earphone, User manual
2. Bluetooth will be coming after 2 weeks, only support data transferring.

# 7inch 2G GSM Calling (Q77)

**veidoo** www.veidoo.com  
Shenzhen Veidoo Digital Vision Co.,Ltd



- > 7" capacitive multi-touch panel
- > Screen: 800\*480
- > CPU: MTK6515 1GHz Cortex A9
- > Android 4.0.4
- > 512MB DDRIII, 4GB (NAND FLASH)
- > 0.3MP Front+0.3MP Rear
- > 2G Built in+GPS+Bluetooth+FM
- > Battery type Lithium-ion 3000mAh

Remark:  
Packing including: Unit Tablet,USB Cable,  
Charger, Earphone, User Manul

# 7inch 3G All in one (M7227)

**veidoo** [www.veidoo.com](http://www.veidoo.com)  
Shenzhen Veidoo Digital Vision Co.,Ltd



- > 7" capacitive multi-touch panel
- > Screen: 1024\*600
- > CPU: MTK8377 Dual core 1GHz Cortex A9
- > Andriod 4.1
- > 1GB DDRIII, 8GB (NAND FLASH)
- > 0.3mega pixels camera in back and 0.3MP in front
- > 3G Built in+GPS+Bluetooth+FM + Analog TV
- > Battery type Lithium-ion 4000mAh

#### Remark:

1. Packing including: Unit Tablet, USB Cable, Charger, Earphone, User Manul
2. 8377 is for dual core CPU

# 9.7inch Dual Core(HY971)

**veidoo** [www.veidoo.com](http://www.veidoo.com)  
Shenzhen Veidoo Digital Vision Co.,Ltd

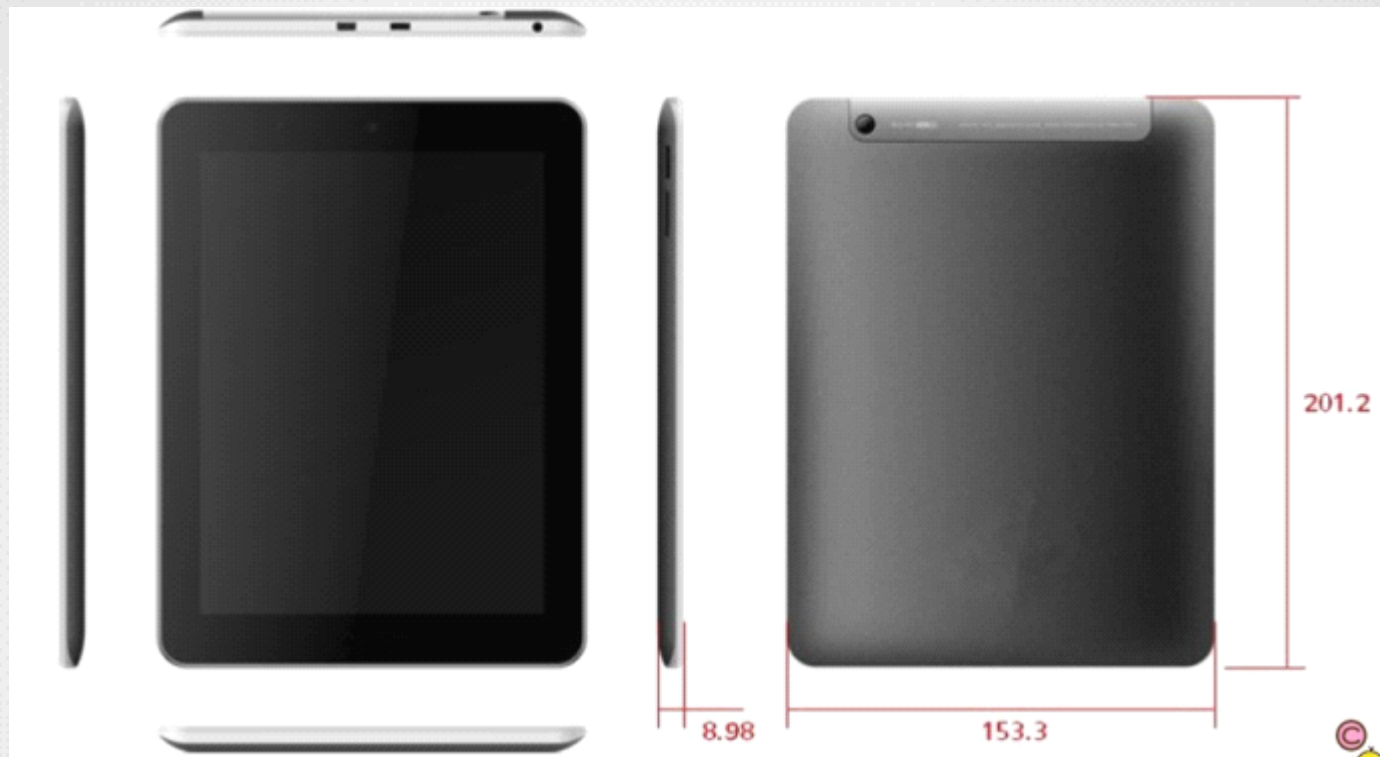


- > 9.7"capacitive multi-touch panel  
screen: 1024\*768
- >CPU: Infotmic iMAPX820, Cotex A5, Dual  
Core 1.2Ghz
- >Andriod 4.1
- >1GB DDRIII,16GB (NAND FLASH)
- >0.3mega pixels camera in back + 2.0MP  
in front
- >Battery type Lithium-ion 6000mAh

Remark:  
Packing including: Unit Tablet, USB  
Cable,Charger, User Manual

# 8inch Ipad Mini (V801)

**veidoo** www.veidoo.com  
Shenzhen Veidoo Digital Vision Co.,Ltd



- > 8"capacitive multi-touch panel  
screen: 1024\*768
- >CPU: K3V2 Hi3620 Quad core ARM  
Cortex A9/1.2GHz
- >Andriod 4.1
- >1GB DDRIII,4-16GB (NAND FLASH )
- >HDMI: 1080P Bluetooth: Support
- >0.3mega pixelsl camera in back + 2.0MP  
in front
- >Battery type Lithium-ion 6000mAh

#### Remark:

- 1.Packing including: Unit Tablet, USB  
Cable,Charger, User Manual
2. 2G GSM/3G Built in for optional



# 10.1inch Quad Core(Q101)

**veidoo** [www.veidoo.com](http://www.veidoo.com)  
Shenzhen Veidoo Digital Vision Co.,Ltd



- > 10.1"capacitive multi-touch panel  
screen: 1280\*800
- >CPU: Allwinner A31 Quad core 1.2GHz,  
Cortex-A7
- >Andriod 4.1
- >2GB DDRIII,16GB (NAND FLASH)
- >0.3mega pixels camera in back + 2.0MP  
in front
- >Battery type Lithium-ion 7000mAh

Remark:  
Packing including: Unit Tablet, USB  
Cable,Charger, User Manual

# Veidoo ODM Project

**Veidoo** www.veidoo.com  
Shenzhen Veidoo Digital Vision Co., Ltd



Core: 1000M + 300 MHz  
penetration handwritten

3.2M Auto Focus Camera  
GPS (Option)

SD Card Slot

4000mAh battery

Size: 140\*86\*28mm

Read I.D. Card info. (Alarm, Storage)

WIFI, Surf internet

Multi-Media

Ram: 128MB

4GB Flash

Mini-USB, Connect to PC, USB Charging.

Support USB 3G Dongle

Weight: Appx 300g

HD Camera, Video recording

GPS Function

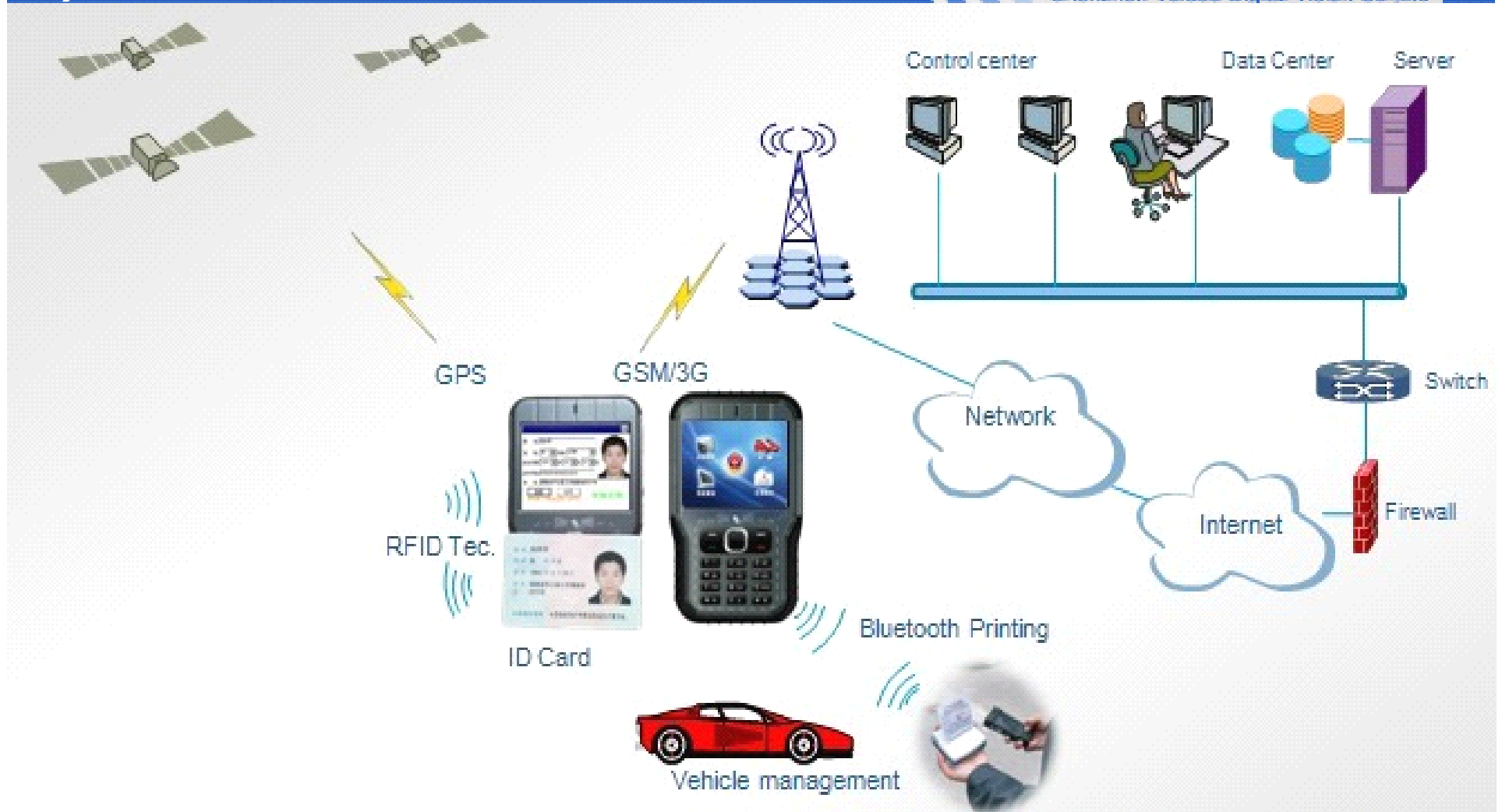
Office application

OS: WinCE 6.0

I.D. Card Module Built in Bluetooth 、WiFi (Option)、

3.5" LCD, touch

# System Instruction

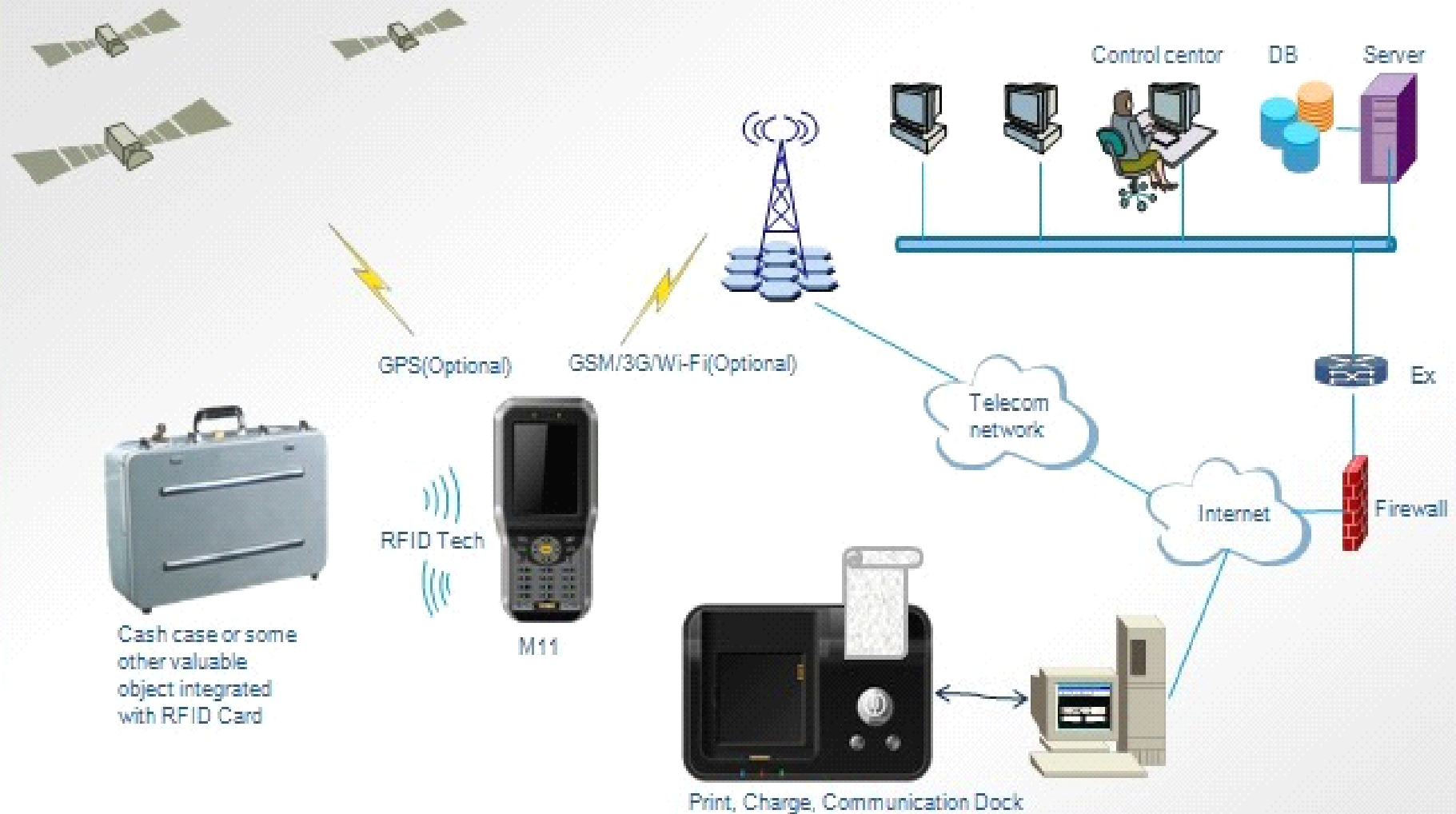


by the power of abundant technology such as RFID, GPS, GSM and Bluetooth, M10 can help government to improve the work efficiency in the following applications: inspect ID card, recognize the illegal vehicle, dispatch mission to the field operators and take mutual actions

# System Instruction

150mm\*95.3mm\*30mm





This handheld device is integrated with RFID, Fingerprint, GPS, GSM, barcode and printer technology. It becomes to be a multi function device for logistic and asset management application, and it's specially helpful for monitoring the transportation of valuable objects like cash case of the bank.



Thank You !

