

GE Light Speed VCT
16 Slice CT Scan



SPECIFICATIONS	PARAMETER
Gantry aperture	70 cm
Gantry tilt	30°
Scan thickness	.625, 1.25, 2.5, 3.75, 5, 7.5, 10 MM
Scan speed	0.5, 0.6, 0.7, 0.8, 0.9, 1, 2, 3
Scan kvp	80, 100, 120, 140 Kv
Scan ma	upto 440 mA
Tube capacity	6.3 mhu
Detector type	16 X 912 ROWS
Scan fov	25, 50
Dicom	In built
Recommended	Below 100 Cases

GE-CT 385



GE - CT SCAN
Pre owned

- Fine Resolution images
- High quality
- Fast technology
- Accuracy
- Productivity
- Powerful
- Affordable

- Best for veterinary hospital
- Low dose irradiation
- More smaller

GE HiSpeed LXI - DXI - FXI - ZXI - CT/e
Fast Single Slice



SPECIFICATIONS	PARAMETER
Gantry aperture	65 / 70 cm
Gantry tilt	30°
Scan thickness	1,2,3,5,7,10 mm
Scan speed	0.8, 1,1.5,2,3 sec
Scan kvp	80,120,140,
Scan ma	upto 350 mA
Tube capacity	2 / 3.5 / 6.3 mhu
Detector type	Solid state detector
Scan fov	18, 25, 42, 50 cm
Dicom	Inbuilt
Recommended	Below 30 Cases

嘉醫科技顧問有限公司
 高雄市中山二路91號20樓之4
 負責專員: 蔣定洲
 TEL: (07) 334-1928
 FAX: (07) 334-1928
 手機: 0970803907
 EMAIL: juli.john2001@yahoo.com.tw



GE Light Speed VCT
16 Slice CT Scan



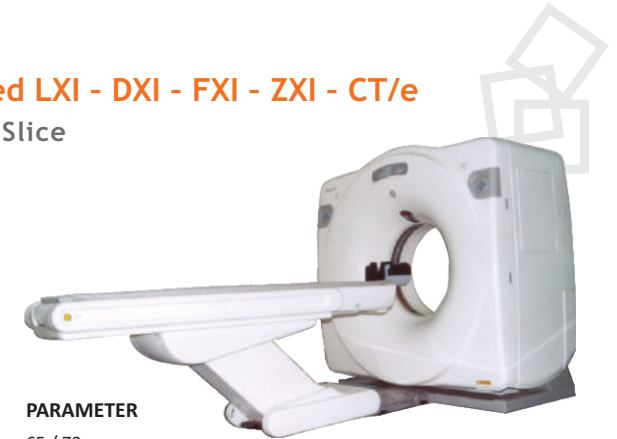
SPECIFICATIONS	PARAMETER
Gantry aperture	70 cm
Gantry tilt	30°
Scan thickness	.625, 1.25, 2.5, 3.75, 5, 7.5, 10 MM
Scan speed	0.5, 0.6, 0.7, 0.8, 0.9, 1, 2, 3
Scan kvp	80, 100, 120, 140 Kv
Scan ma	upto 440 mA
Tube capacity	6.3 mhu
Detector type	16 X 912 ROWS
Scan fov	25, 50
Dicom	In built
Recommended	Below 100 Cases

GE Light Speed QXI
Four Slice Spiral



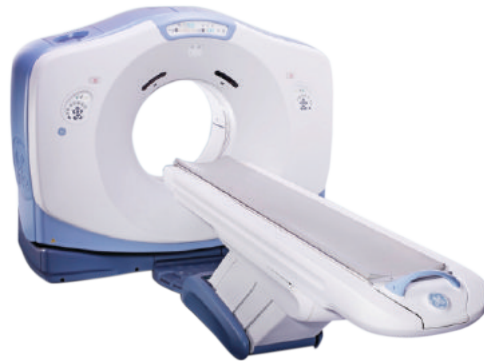
SPECIFICATIONS	PARAMETER
Gantry aperture	70 cm
Gantry tilt	30°
Scan thickness	0.5, 0.6, 0.7, 0.8, 0.9, 1,2,3,4
Scan speed	0.63, 1.25, 2.5, 3.75, 7.5, 10 Sec
Scan kvp	80, 100, 120, 140 Kv
Scan ma	upto 440 mA
Tube capacity	6.3 mhu
Detector type	Four rows of HR detectors
Scan fov	18, 25, 42, 50 cm
Dicom	In built
Recommended	Below 50 Cases

GE HiSpeed LXI - DXI - FXI - ZXI - CT/e
Fast Single Slice



SPECIFICATIONS	PARAMETER
Gantry aperture	65 / 70 cm
Gantry tilt	30°
Scan thickness	1,2,3,5,7,10 mm
Scan speed	0.8, 1,1.5,2,3 sec
Scan kvp	80,120,140,
Scan ma	upto 350 mA
Tube capacity	2 / 3.5 / 6.3 mhu
Detector type	Solid state detector
Scan fov	18, 25, 42, 50 cm
Dicom	Inbuilt
Recommended	Below 30 Cases

GE Light Speed Ultra
8 Slice CT Scan



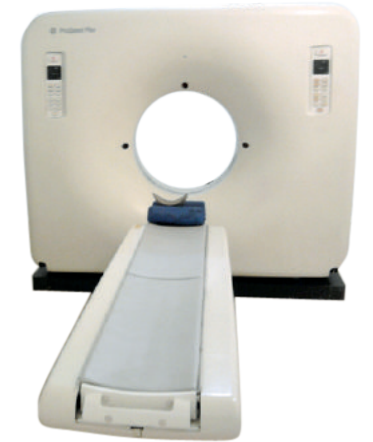
SPECIFICATIONS	PARAMETER
Gantry aperture	70 cm
Gantry tilt	30°
Scan thickness	.625, 1.25, 2.5, 3.75, 5, 7.5, 10 MM
Scan speed	0.5, 0.6, 0.7, 0.8, 0.9, 1, 2, 3
Scan kvp	80, 100, 120, 140 Kv
Scan ma	upto 440 mA
Tube capacity	6.3 mhu
Detector type	8 X 912 ROWS
Scan fov	25, 50
Dicom	In built
Recommended	Below 75 Cases

GE Hi Speed NXI / NXI Pro
Dual Slice Spiral



SPECIFICATIONS	PARAMETER
Gantry aperture	70 cm
Gantry tilt	30°
Scan thickness	0.5,1,2,3,4,5,6,7,10 mm
Scan speed	0.7, 1, 1.5,2,3 sec
Scan kvp	80,120,140
Scan ma	upto 440 mA
Tube capacity	6.3 / 3.5 Mhu
Detector type	Two rows of HR
Scan fov	18,25,35,50 cm
Dicom	Inbuilt
Recommended	Below 40 Cases

GE Prospeed Single Slice Spiral
Single Slice



SPECIFICATIONS	PARAMETER
Gantry aperture	68 cm
Gantry tilt	25°
Scan thickness	1,2,3,5,7,10 mm
Scan speed	1.5,2,3 sec
Scan kvp	80,120,140
Scan ma	upto 350 mA
Tube capacity	3.5 Mhu
Detector type	Soild State / xenon
Scan fov	25,35,42,50 cm
Dicom	Optional
Recommended	Below 25 Cases