

Sentronic International Corp.

Company Profile

Sentronic Int'l Corp.

- Established : Dec. 1987
- Chairman : Mr. Tonko Tsai
- Capital : NTD315M (TWN)
- Sales Revenue : NTD1,950M (2009)
- No. of Employee : 70 Employees (Group)

The Association Group

Sentronic International Suzhou Representative Office

昱准國際貿易(上海)有限公司蘇州辦事處

Sentronic International Hangcho Representative Office

昱准國際貿易(上海)有限公司杭州辦事處

STH Technology (ShenZhen) Co., Ltd.

昱翰科技(深圳)有限公司

Sentronic International (S.H.) Ltd.

昱准國際貿易(上海)有限公司

JTS International Corp.

Sentronic International Corp.

昱捷股份有限公司

STH International (HK) Ltd.

香港昱華有限公司

Mile Stone

- 1987 *SIC established in Taipei, Taiwan.
*Agency of selling Hitachi SICD related products.
- 1988 *JTS (JP) established in Tokyo, Japan.
*SIC gained the “Best Cooperative Partner of the YEAR” award from Acer group.
- 1989 *Agency of selling Hitachi LCM and AV products.
*The 2nd time for SIC to be the “Best Cooperative Partner of the Year” announced by Acer group.
- 1992 *The very first time of reaching the monthly sales amount up to USD one million.
- 1993 *Gained the award of “The Best Cooperative Partner” fm Arima.
*SIC Group-STH(HK) established in Hong Kong.
*The annual sales amount reached up to USD 20 millions.
*Gained the award of “The Best Cooperative Partner” fm ACM.

Mile Stone

- 1996 * SIC Group-JTS(S'pore) established in Singapore.
- 1998 * SIC Group-JTS established in Malaysia.
* Gained the "Outstanding Procurator" award fm Hitachi.
- 1999 * SIC Group-STH established in Suzhou, China.
- 2000 * SIC (TWN) took over business of SIC Group-JTS (S'pore),
and changed the name to Sentronic.
* SIC Group-STH established in ShenZhen, China.
* Sentronic changed Chinese name fm "有限公司" to "股份有限公司".
- 2001 * SIC (TWN) increased capital fm NTD103M to NTD122M.
* SIC (TWN) local sales amount up to NTD700M.
- 2002 * SIC (TWN) increased capital fm NTD122M to NTD193M.
- 2003 * SIC (TWN) increased capital fm NTD193M to NTD230M.
* SIC (TWN) gained ISO 9001:2000 certification.
* Increasing product lines of Stanley, Phison.

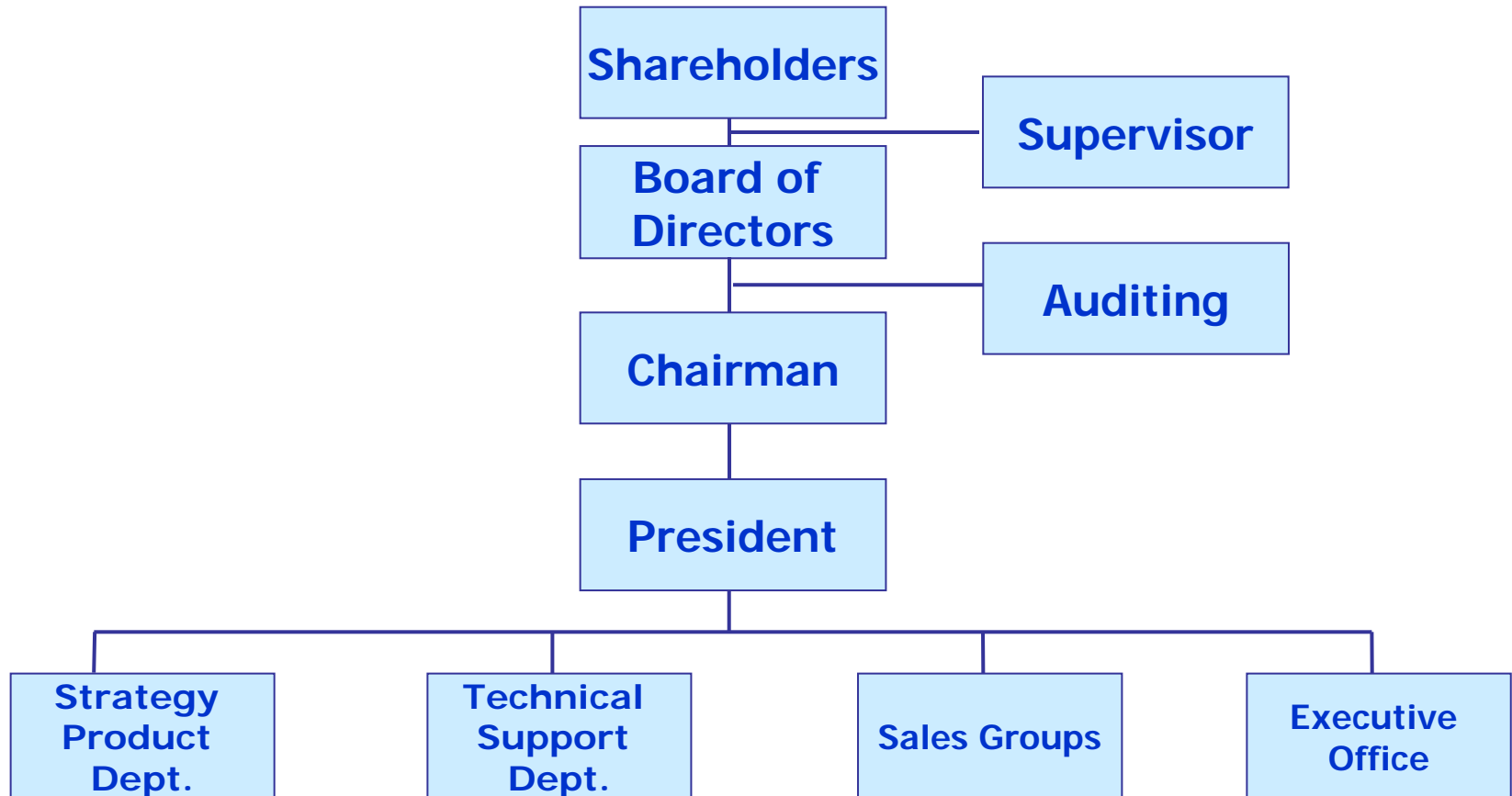
Mile Stone

- 2004
 - * Relocated the operating office to “Metropolitan ERA Headquarters” on the effect of gradually enlarging business.
 - * Increasing product lines of Semtech.
 - * Gained the award of “Best Cooperative Partner of the 2003” from ASUS.
 - * SIC (TWN) increased capital fm NTD230M to NTD290M.
 - * SIC (TWN) approved by SFB for IPO.
- 2005
 - * SIC (TWN) increased capital fm NTD290M to NTD306M.
- 2006
 - * SIC (TWN) is ranked as the 237th out of 500 by Common Wealth Magazine.
 - * SIC (TWN) is ranked as the 242th out of 1000 by BUSINESS WEEKLY.
 - * Gained the award of "budget achievement award" from RENESAS.
 - * Agency of selling Winbond products.
 - * Agency of selling NOVATEK products.
 - * Agency of selling Raydium products.
 - * Agency of selling IAT products.

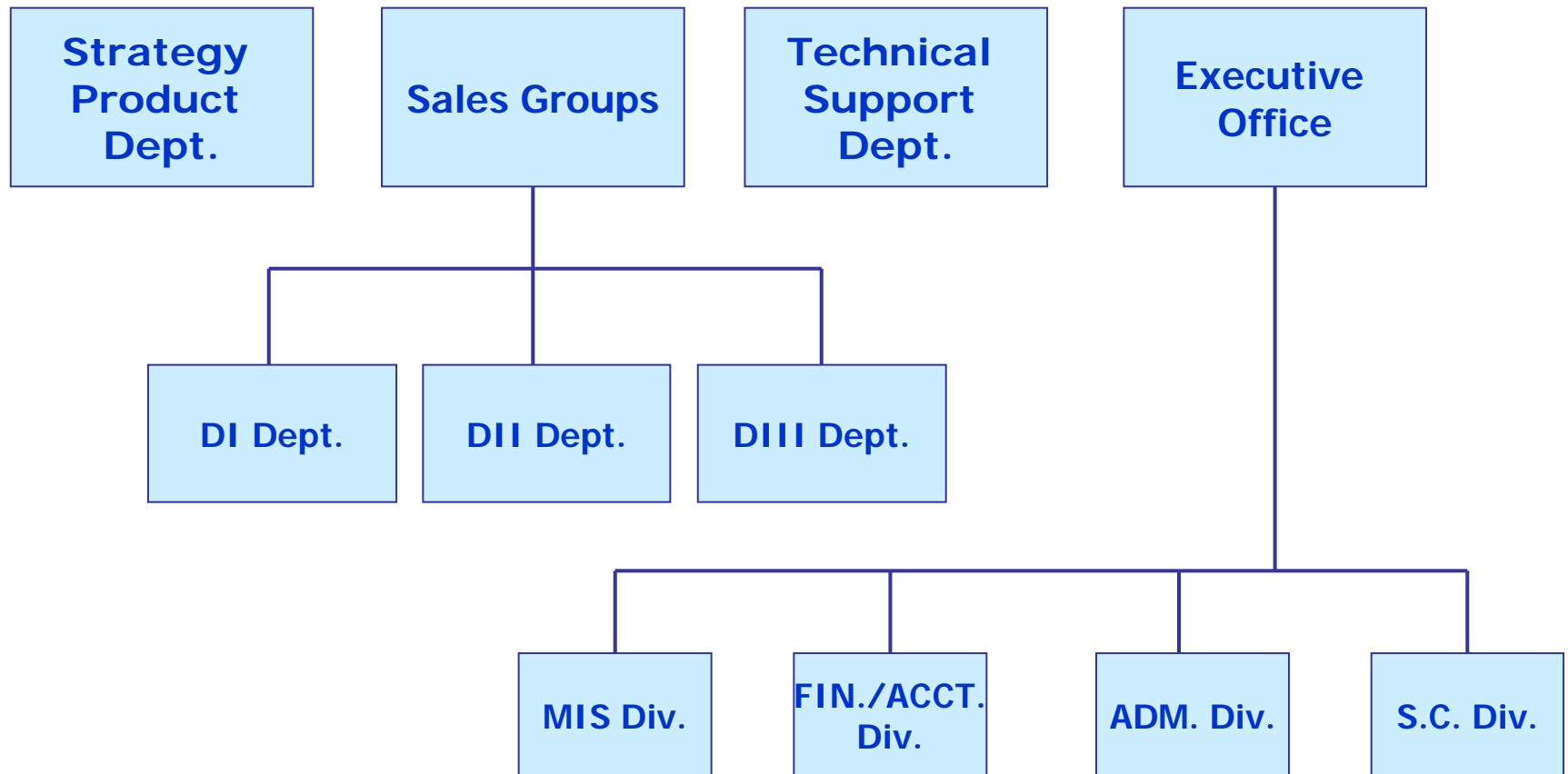
Mile Stone

- 2007 *SIC (TWN) is ranked as the 210th out of 500 by Common Wealth Magazine.
 - *Agency of selling Isahaya products.
 - *Agency of selling Ascend products.
 - *Agency of selling Taisei products.
 - *SIC (TWN) increased capital fm NTD306M to NTD312M.
- 2008 *SIC (TWN) is ranked as the 259th out of 500 by Common Wealth Magazine.
- 2009 *SIC (TWN) is ranked as the 285th out of 500 by Common Wealth Magazine.

Organization Chart



Organization Chart



Products

HITACHI
Inspire the Next

- DP provides:
- LCM Application:
GPS /Smart phone
(2.8",3.5",4.3")



 **IPS Alpha Technology, Ltd.**

- LCM Application:
LCD TV (32", 37")
HD;FULL HD



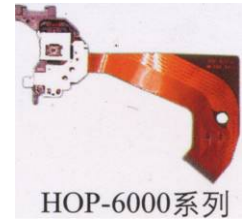
Products

HITACHI
Inspire the Next

HMEL. provides:

➤ Pick-Up :

- ✓ H/H DVD-ROM: HOP-1501X
- ✓ H/H DVD PLAYER: HOP-1200W
- ✓ SILM COMBI: HOP-6202T
- ✓ H/H SUPER MULTI: HOP-H353L/HW355L/HW356L
- ✓ SILM SUPER MULTI: HOP-S301S, HOP-S302S
- ✓ DVD-RECORDER: HOP-7422TL



➤ FEM & Duplexer:

- ✓ 500/600/700/800 series : Quad Band / Triple Band / Dual Band
 - ✓ 1000 series : Dual Band
- Duplexer for WCDMA

Application

■ **RENESAS** provides:

- **Automotive:** Car audio, Car Information System (CIS) /Telematics, Dashboard network CAN
- **Digital Home Electronics:** Blood pressure gauge, Blood sugar level meter, Notebook PC, Power meter, ePOS, Digital still camera, Digital movie, DVD player, Analog TV system, FPD-TV, PDP, Set top box, Digital audio, Digital PPC, PDA
- **Inverter Applications:** Home appliances, Industry, OA
- **Network:** Network memory, Network terminal, PLC, VoIP-ATA
- **Wireless:** Cellular phone (CDMA/GSM)



Products

- **RENESAS** provides:
 - MPU & MCU
 - LCD Driver / Controller
 - Memory
 - Smart Card
 - Standard IC
 - Discrete
 - ASSP (Application Specific Standard Products)
 - System In Package
 - USB Device
 - Bluetooth LSI
 - Software and Tools

Products

- **RENESAS** provides Discrete:
 - MOSFET : Power MOSFET, Micro FET, Small Signal MOSFET.
 - Linear IC : Standard HA17324, HA17339, HA17358....
 - Logic IC : ACT, HCT, Uni-logic....
 - Digital Transistor & Power Transistor.
 - Pin Diode for Antenna & Attenuator.
 - Variable Cap Diode for VCO.
 - Diodes : Schottky, Surge, 1/2W Zener, 1W Zener, Switching.
 - Thyristors & Triacs

Products

Focus market segment

under Middle size PC

Note PC

Net PC

Tablet PC



Mobile Applications

Mobile phone
Smart phone

Game

PMP

PND

UMPC

MID

DSC...



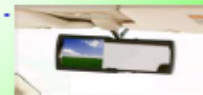
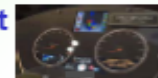
Auto mobile

Instrument Panel

Information Monitor

Back Mirror Monitor

...



→ All display application less than 15"

Products

a-Si for Mobile Applications (1)



240 x 432
wQVGA

16M
R61521 DBI DPI
R61509V 262k Index-reg

16M
R61525 DBI DPI MDDI
 WS: Dec./09 MP: Q1/10

R61509V
 Common Glass Compatibility
wQVGA 262k Index-reg

320 x 240
L-QVGA

262k
R61582 DBI DPI MeSSi
 WS: Feb./10 MP: May/10
 HX8388-A pin compatible

240 x 320
QVGA

262k 16M
R61520 DBI DPI
R61522 DBI DPI
R61505W 262k Index-reg
 R61505W
 Common Glass Compatibility

262k
R61526 DBI DPI
 S6D04H0 pin compatible
 WS: Now; MP: April/10

R61580 262k Index-reg
 ILI9325 pin compatible

262k mipi
QVGA DSI MeSSi VPNL

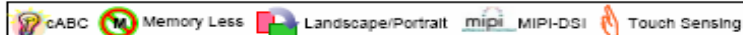
176 x 220
QCIF+

R61503V

262k
QCIF+ DBI Type-C

2009

2010



5

ers Inc. All right reserved. RSPTW09-11-03-A01

RENESAS SP

Products

a-Si for Mobile Applications (2)

480 x 864
wVGA

16M GIP 540RGB
mipi
wVGA
MIPI DSI
3 Lane
MDDI
WS: Q1/10 MP: Q2/10



360 x 640
nHD

16M mipi
R61523 DBI
DSI



16M/262K mipi
nHD DBI
DPI
DSI

480 X 320
LHVGA

262k
R61524 480 x 360
MDDI
Index-reg
WS: Dec./09 MP: Q2/10

320 x 480
HVGA

262k
R61581 DBI
DPI
MDDI
WS: Now MP: Jan./10
ILI9481 pin compatible



262k
HVGA DBI
DPI
MDDI

2009

2010

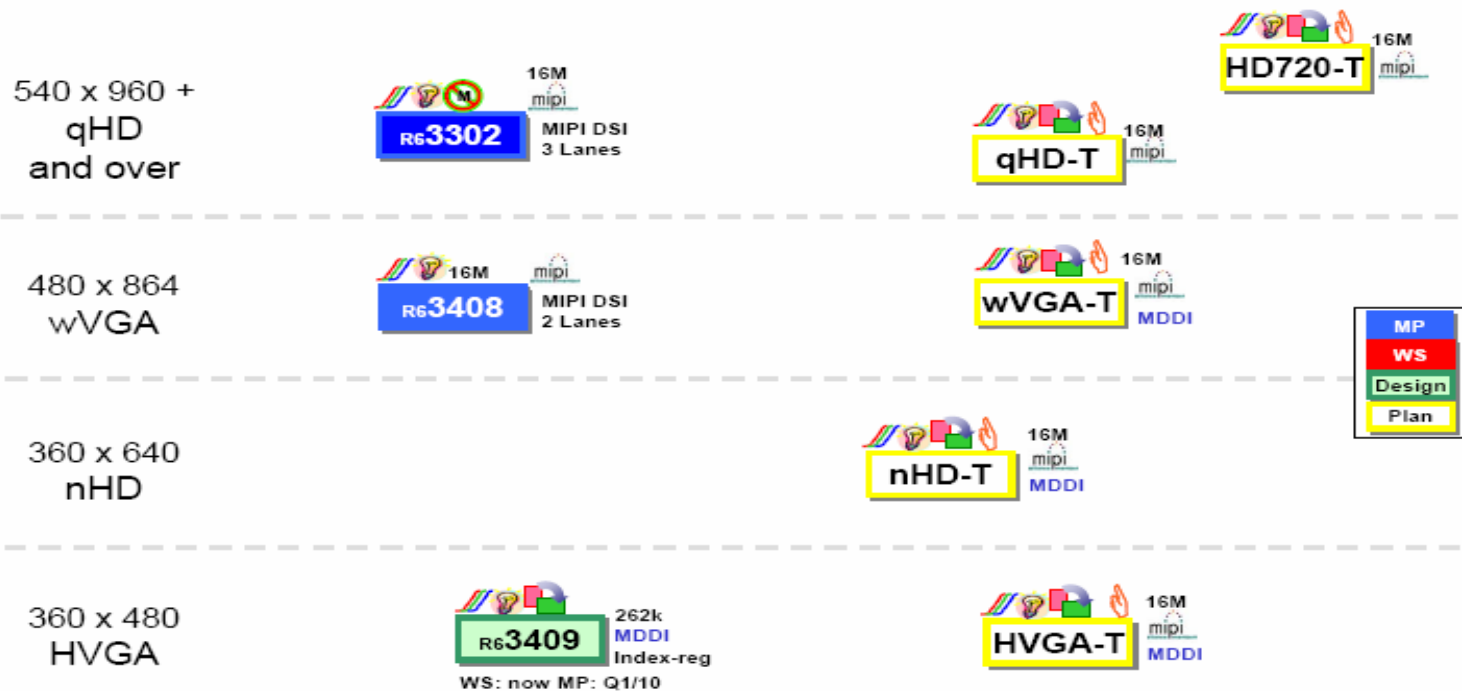
cABC Memory Less Landscape/Portrait mipi MIPI-DSI Touch Sensing

6 ers Inc. All right reserved. RSPTW09-11-03-A01

RENESAS SP

Products

LTPS for Mobile Applications



2009

2010

cABC Memory Less Landscape/Portrait mipi MIPI-DSI Touch Sensing

7 ers inc. All right reserved. RSPTW09-11-03-A01

RENESAS SP

Products

DSC/AV/Automotive Applications



Automotive
Spec

262K 240RGB x432
aSi R6**1509AC**

480 x 272
wQVGA

16M Triple Gate
aSi R6**1702** RGB IF

16M Triple Gate
aSi **L-wQVGA** RGB IF

320 x 240
L-QVGA

16M Dual Gate
aSi R6**1303** RGB IF
YCbCr 4:2:2

16M
aSi R6**1306** RGB IF
YCbCr 4:2:2

2009

2010

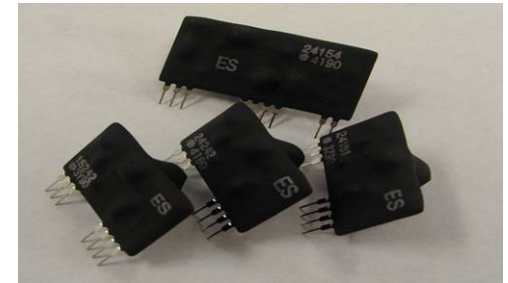
cABC
 Memory Less
 Landscape/Portrait
 MIPI-DSI
 Touch Sensing

8
ers Inc. All right reserved. RSPTW09-11-03-A01

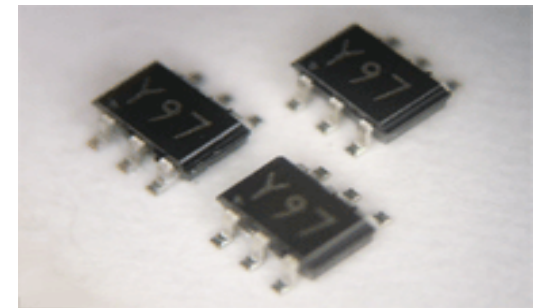
RENESAS SP

Products

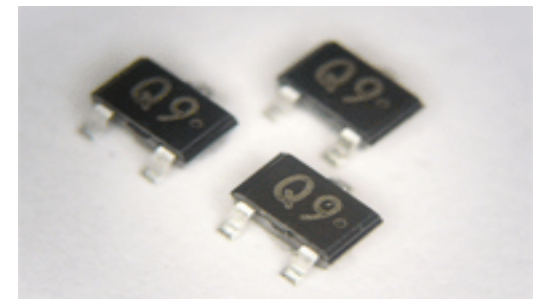
- **IDC ISAHAYA ELECT.** provides:
Challenging the Limitless Possibilities of Electronics.
IDC challenges the limitless possibilities of electronics with the international community and environmental con



- HYBRID IC
- ✓ Isolated DC-DC converter
- Small signal Transistor & Diode



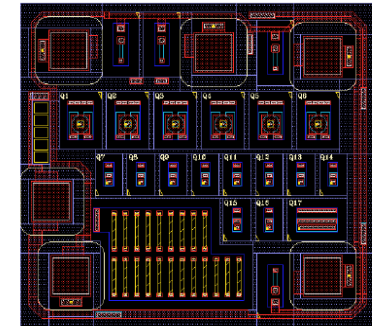
- ✓ 2ch Muting transistor with distortion prevention buffer transistor
- ✓ Ultra super mini muting transistor with built-in resistor



Products

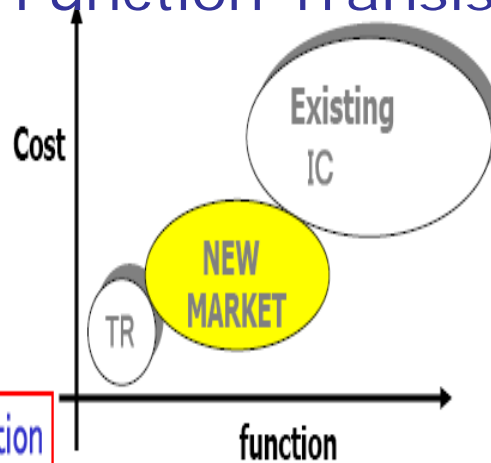
■ **IDC ISAHAYA ELECT** provides:

Challenging the Limitless Possibilities of Electronics.
IDC challenges the limitless possibilities of electronics with the international community and environmental con



➤ MFT (Multi Function Transistor)

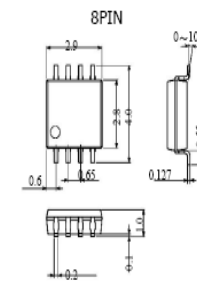
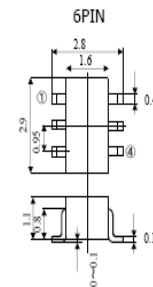
* Creating new markets between transistors and existing ICs.



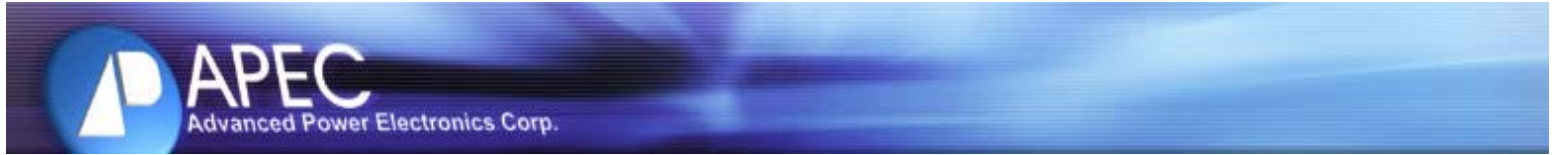
New proposals of multi-function transistors,

such as new standard IC and new custom-built IC

	2004	2005	2006	2007
6PIN SC-74		MFT6PIN		
8PIN TMSOP8		MFT8PIN		
Custom MFT Package 8PIN(DIP,SOP)		MFT8PIN(DIP,SOP)		
Custom chip Many pins 8PIN~			Custom IC8PIN~	



Products



➤ Power MOS FET

TO-247 / TO-220 / TO-263(261) / TO-252(251) / SOP-8 / TSSOP-8
SOT-23 / SOT323 / AMAPK / DFN.

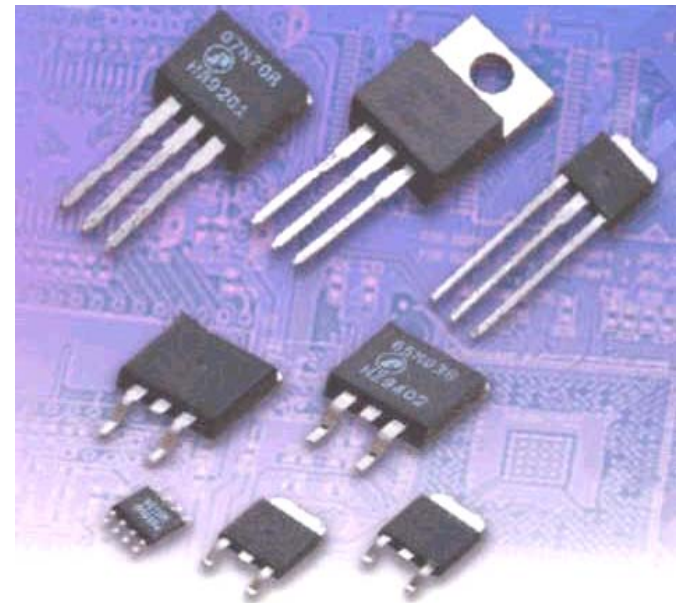
12v ~ 1200v All Series.

Direct FET

➤ IGBT

TO-3P Package / TSOP-8 Package

270v ~ 1200v Products.



Products



- ▶ **ICs Products. (Linear Regulator)**

0.3mA ~ 7A Dropout & Dual / Shunt Regulator (LDO)

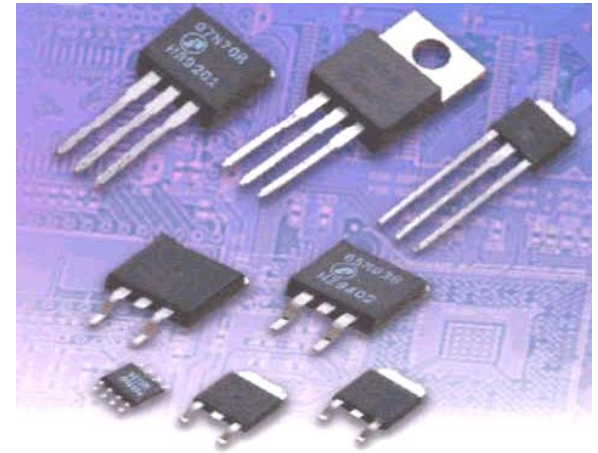
- ▶ **Switching Controller**

Dual Phase / Dual output

- ▶ **Switching Converter**

Buck DC/DC Converter / VFM Converter

- ▶ **Reset IC / Hall Sensor / LED Driver**



Products

■ **M·C·C** provides:

Micro Commercial Components™

- Schottky Barrier Rectifiers
- Standard Rectifiers
- Fast Recovery Rectifiers
- Superfast&Ultrafast Recovery Rectifiers
- Switching Diodes
- Zener Diodes
- TVS&ESD Devices
- Metal Oxide Varistors
- Multi-Layer Varistors
- Small Signal Transistors
- Medium Power Transistors
- Voltage Regulators
- NTC Thermistors
- LEDs



Products



Lyontek Products Solution:

➤ SRAM

✓ Low Power SRAM (3V/5V)

- 64Kbit ~2Mbit
- 4Mbit ~8Mbit
- 16Mbit

✓ High Speed SRAM (3V/5V)

- 64Kbit ~256Kbit
- 1Mbit ~ 2Mbit
- 4Mbit

Products



Lyontek Products Solution:

➤ Audio IC Products

▶▶ Audio ClassAB

Part Number	Stereo/ Mono	Output Power (W) With Load	THD+N (%)	Earphone Function	Input	OutPut	Data Sheet	PKG	Note
LY8890	Mono	1.0W/8Ω 2.0W/4Ω (*)	0.2%	None	Single-End	BTL		8 MSOP (118mil) 8 DFN (3x3mm) (*)	-
LY8891	Mono	1.0W/8Ω 2.0W/4Ω (*)	0.2%	None	Single-End	BTL		8 MSOP (118mil) 8 DFN (3x3mm) (*) 9 ball WCSP (pitch 0.5mm) (*)	-
LY87001	Mono	1.0W/8Ω	0.2%	None	Single-End	BTL		9 ball WCSP (pitch 0.5mm)	-
LY8892	Mono	1.4W/8Ω 2.0W/4Ω (*)	0.2%	None	Single-End	BTL		8 MSOP (118mil) 8 DFN (3x3mm) (*) 10 MSOP (118mil) 10 DFN (3x3mm) (*)	MSOP 10 / DFN 10 support selectable shutdown
LY8893	Mono	1.0W/8Ω	0.2%	Yes	Single-End	SE/BTL		8 MSOP (118mil)	shutdown high enable
LY8895	Mono	1.0W/8Ω	0.2%	Yes	Single-End	SE/BTL		8 MSOP (118mil)	-
LY8601	Stereo	0.25W/8Ω 0.1W/16Ω	0.1%	None	Single-End	SE		8 MSOP (118mil)	shutdown high enable
LY8602	Stereo	1.4W/8Ω 2.0W/4Ω (*)	0.2%	None	Single-End	SE/BTL		10 MSOP (118mil) 10 DFN (3x3mm) (*)	-
LY8661	Stereo	1.4W/8Ω 2.0W/4Ω (*)	0.2%	Yes	Single-End	SE/BTL		16 SOP (150 mil) 16 QFN (4x4mm) (*)	SOP 16 support selectable shutdown
LY8662	Stereo	1.4W/8Ω 2.0W/4Ω (*)	0.2%	Yes	Single-End	SE/BTL		16 QFN (3x3mm) (*)	-
LY8663	Stereo	1.4W/8Ω 2.0W/4Ω (*)	0.2%	Yes	Single-End	SE/BTL		14 TSSOP (173mil)with thermal pad (*)	shutdown high enable

Products



Lyontek Products Solution:

▶ Audio IC Products

▶▶ Audio ClassD

Part Number	Stereo/ Mono	Output Power(W) With Load	THD+N (%)	Earphone Function	Input	OutPut	Data Sheet	PKG	Note
LY8005	Mono	1.4W/8Ω	0.1%	None	Differential	BTL		8 MSOP (118mil)	-
LY8006	Mono	1.4W/8Ω 2.5W/4Ω (*)	0.1%	None	Single-End	BTL		8 MSOP (118mil)	-
								8 DFN (3x3mm) (*)	
LY8010	Mono	2.5W/4Ω	0.1%	None	Differential	BTL		8 DFN (3x3mm)	-
								9 ball WCSP (pitch 0.5mm)	
LY8210	Stereo	2.5W/4Ω (*) 1.4W/8Ω	0.1%	None	Differential	BTL		18 ball WCSP (pitch 0.5mm) (*)	-
								20 TSSOP (173mil)with thermal pad (*)	

ps : 1. Shutdown function normal low enable.

2. (*) Support 4Ω output loading.

Products

■ Linear IC

- Voltage Regulator
- Low Dropout Voltage Regulator
- Power Supply Controller And DC-DC Converter IC
- Voltage Detection & System Reset IC
- Power Factor Control IC
- Voltage Comparator
- Operational Amplifier
- Timer
- Audio Power Amplifier and Audio Related circuit
- Video Singnal Switch IC
- Telecommunication Circuit
- Motor Controller IC
- Melody IC
- Melody IC
- Alarm /Sound General IC
- Radio and Cassette Recorder Circuit
- Television Circuit
- Interface And Driver Circuit
- FET Bias Controllers
- Christmas Lamp Controller
- Mouse & Keyboard Controller
- Leakage Current Detector
- Multiplexers/Demultiplexers IC
- Remote Controller IC
- Hall IC
- Miscellaneous
- Logic



Products

■ **UTC** *Discrete*

➤ **Bipolar Transistors**

- ✓ Small Signal Transistor
- ✓ Medium Power Transistor
- ✓ High Power Transistor

➤ **Thyristor**

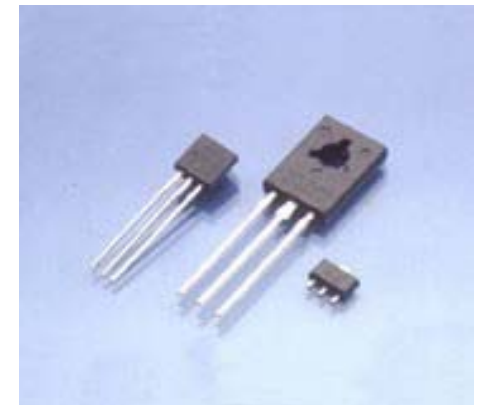
- ✓ SCR (Silicon Control Rectifier)
- ✓ Triac

➤ **Unipolar Transistors**

- ✓ JFET (junction Field Effect Transistor)
- ✓ DMOSFET

➤ **Diode**

- ✓ Switching Diodes
- ✓ Zener Diodes
- ✓ Schottky Diodes
- **Power MOSFET**



NMT(Nanometer Modeling Technology) - 金屬與樹脂的奈米化結合技術

特長

● 絕緣性

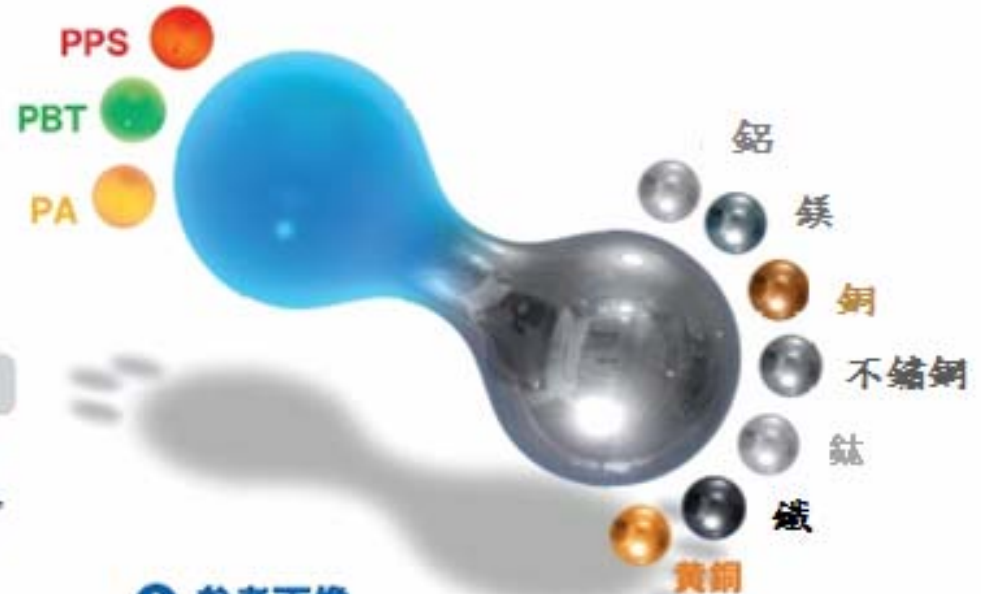
不同材質的金屬接合部，以樹脂為絕緣介面，電位差可防止鏽的產生，且絕緣部的設計更加自由多變。

● 部位的強度設計

物性不同的金屬，一起射出成型後，更能使金屬的特性發揮最大的應用。強調強度的部位，使用較硬金屬，其他部位要輕量化，可使用輕金屬，如此即可兼具強度及輕量化的需求。

● 氣密性

金屬經過特殊處理，形成奈米級(20~100nm)的孔洞，樹脂可完全滲入孔洞，產生液體及氣體均無法通過的氣密性，金屬端子及管體，以樹脂為介質，能達到50~100倍的氣密性。



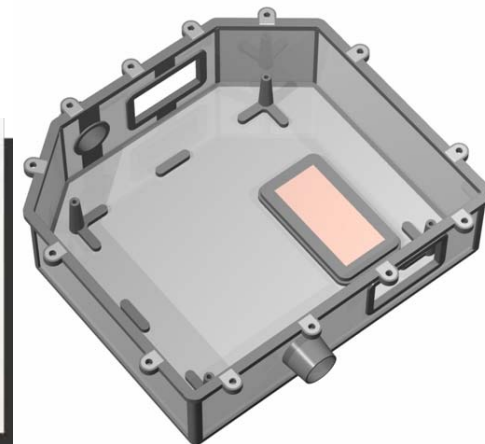
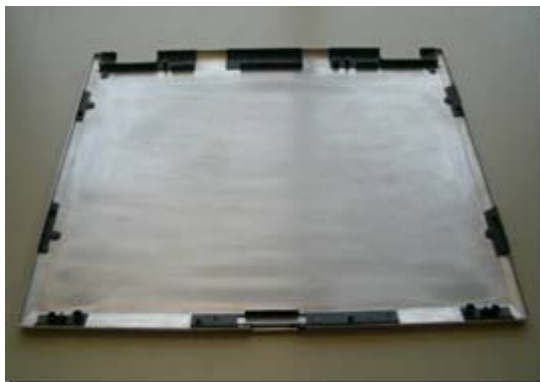
參考圖像



大成 Plas 株式会社



「NMT」應用之產品介紹



石墨基板

Graphite Substrate

產品參數

- 熱傳導迅速 (400 W/mk)。
- 熱組抗低 (0.08 °C-in²/W)。
- 熱傳導及熱阻抗之效能分別高於鋁基板及銅基板。
- 石墨基板能夠將熱迅速且均勻的傳遞到所需的散熱端。
- 石墨基板能夠將熱源及散熱端的溫度達到幾乎一致的標準。
- 石墨的熱傳遞極佳，因此能夠確實的延長LED壽命。

測試項目	測試結果	單位
銅皮與石墨之附著力	2.5	Kg/cm
厚度	1.2	mm
擊潰電壓	2.4	KV
電阻值	>10 ¹³	(Ω · cm) at25°C
焊接耐熱溫度	230 (180 s)	°C
熱衝擊 (全環境包裹溫度)	300 (80 s)	°C
熱傳導係數	400	W/mk
熱阻抗	0.08	°C in ² /W
熱擴散率	3.0	cm ² /s
比重	1.3	----
石墨含量	99.5	%
密度	1.5	g/cm ³