

## Gas Turbine



<b>HITACHI GTG-060 X4 UNITS</b>			
<b>ENGINE</b>		<b>ALTERNATOR</b>	
ENGINE MODEL	GTG-060 X4 UNITS	MODEL	BT31003A1A
ENGINE NO.		SER. NO.	
Quantities	4	FREQUENCY	60HZ
OUTPUT	5440KW 6800KVA	POLES	4
R/MIN	1800RPM	PF	0.91
WEIGHT		VOLTAGE	6600 V
YEAR	2001	PRICE	



<b>KAWASAKI GAS TURBINE</b>			
<b>ENGINE</b>		<b>ALTERNATOR</b>	
ENGINE MODEL		MODEL	
ENGINE NO.	K-I-4020006	SER. NO.	903763A1A
Quantities	1	FREQUENCY	60HZ
OUTPUT	800KW 1000KVA	POLES	4
R/MIN	1800 RPM	PF	0.8
WEIGHT		VOLTAGE	6600V
YEAR	Oct.1997	PRICE	

## HFO 500KW – 1000KW



<b>YANMAR M220AL</b>			
<b>ENGINE</b>		<b>ALTERNATOR</b>	
ENGINE MODEL	M220AL-EN	MODEL	TSL-GJ-800-T
ENGINE NO.	2441FTR	SER. NO.	V410277002
Quantities	1	FREQUENCY	60 HZ
OUTPUT	812.5KVA 650KW	POLES	8
R/MIN	900 RPM	PF	0.8
WEIGHT		VOLTAGE	6600 V
YEAR	1997	PRICE	



YANMAR M200AL-EN			
ENGINE		ALTERNATOR	
ENGINE MODEL	M200AL-EN	MODEL	
ENGINE NO.	2187FNC	SER. NO.	
Quantities	1	FREQUENCY	60 HZ
OUTPUT	730 PS 536KW	POLES	8
R/MIN	900 RPM	PF	0.8
WEIGHT		VOLTAGE	6600 V
YEAR		PRICE	



YANMAR M200AL-EN			
ENGINE		ALTERNATOR	
ENGINE MODEL	M200AL-EN	MODEL	
ENGINE NO.	2168FNC	SER. NO.	1545 VA
Quantities	1	FREQUENCY	60 HZ
OUTPUT	730 PS 536KW	POLES	8
R/MIN	900 RPM	PF	0.8
WEIGHT		VOLTAGE	6600 V
YEAR		PRICE	



YANMAR M200AL-EN			
ENGINE		ALTERNATOR	
ENGINE MODEL	M200AL-EN	MODEL	
ENGINE NO.	2166FNC	SER. NO.	
Quantities	1	FREQUENCY	60 HZ
OUTPUT	750PS 551KW	POLES	8
R/MIN	900 RPM	PF	0.8
WEIGHT		VOLTAGE	6600 V
YEAR		PRICE	



YANMAR 6N21AL-EN			
ENGINE		ALTERNATOR	
ENGINE MODEL	6N21AL-EN	MODEL	
ENGINE NO.	2936 FTK	SER. NO.	
Quantities	1	FREQUENCY	
OUTPUT	780 KW	POLES	
R/MIN	900 RPM	PF	
WEIGHT		VOLTAGE	
YEAR		PRICE	



YANMAR 6N21AL-EN			
ENGINE		ALTERNATOR	
ENGINE MODEL	6N21AL-EN	MODEL	TSL-GJ-800-T
ENGINE NO.	4191FTC 4192 FTC	SER. NO.	G110861001
Quantities	2	FREQUENCY	50 HZ
OUTPUT	900KVA 720KW	POLES	6
R/MIN	1000 RPM	PF	0.8
WEIGHT		VOLTAGE	6600 V
YEAR	March.2004	PRICE	



YANMAR 6N18AL-EN			
ENGINE		ALTERNATOR	
ENGINE MODEL	6N18AL-EN	MODEL	
ENGINE NO.	4407FSC	SER. NO.	904509A50A-1
Quantities	1	FREQUENCY	50 HZ
OUTPUT	552 KW	POLES	6
R/MIN	1000 RPM	PF	0.8
WEIGHT	3240 KG	VOLTAGE	6600 V
YEAR	April.2004	PRICE	



<b>NIIGATA 6L 22HX</b>			
<b>ENGINE</b>		<b>ALTERNATOR</b>	
ENGINE MODEL	6L 22HX	MODEL	
ENGINE NO.		SER. NO.	
Quantities	1	FREQUENCY	60 HZ
OUTPUT	750KVA 600KW	POLES	8
R/MIN	900 RPM	PF	0.8
WEIGHT	8900 KG	VOLTAGE	6600 V
YEAR	FEB.2002	PRICE	



<b>NIIGATA 6L 22HX</b>			
<b>ENGINE</b>		<b>ALTERNATOR</b>	
ENGINE MODEL	6L22HX	MODEL	
ENGINE NO.	19464	SER. NO.	
Quantities	1	FREQUENCY	50 HZ
OUTPUT	750 KVA	POLES	8
R/MIN	900 rpm	PF	0.8
WEIGHT	8900 KG	VOLTAGE	6600 V
YEAR	Feb. 2002	PRICE	



<b>DAIHATSU 6Dsb-22</b>			
<b>ENGINE</b>		<b>ALTERNATOR</b>	
ENGINE MODEL	6Dsb-22	MODEL	
ENGINE NO.	DB622579	SER. NO.	ATE663A
Quantities	1	FREQUENCY	50 HZ
OUTPUT	750 KVA 600KW	POLES	6
R/MIN	1000 RPM	PF	0.8
WEIGHT	4000 KG	VOLTAGE	6600 V
YEAR	MAY.1981	PRICE	

## HFO 1000KW – 3000KW



<b>YARMAR 6N280L-EN GAS GENERATOR</b>			
<b>ENGINE</b>		<b>ALTERNATOR</b>	
ENGINE MODEL	6N280L-EN	MODEL	
ENGINE NO.		SER. NO.	
Quantities	2	FREQUENCY	60 Hz
OUTPUT	2800KW 1,750 kva	POLES	
R/MIN	1,000 rpm	PF	
WEIGHT	16,000 Kg Skid mounted sets.	VOLTAGE	6,300 v
Total Hours No. 1:24996		Total Hours No. 2:25141	



<b>NIGATTA 8L40X</b>			
<b>ENGINE</b>		<b>ALTERNATOR</b>	
ENGINE MODEL	8L40X	MODEL	
ENGINE NO.		SER. NO.	
Quantities	1	FREQUENCY	60 HZ
OUTPUT	3600 PS 2646 KW	POLES	18
R/MIN	400 RPM	PF	0.85
WEIGHT		VOLTAGE	6600V
YEAR	May,1974	PRICE	USD 350,000



<b>NIIGATA 8L 32CLX</b>			
<b>ENGINE</b>		<b>ALTERNATOR</b>	
ENGINE MODEL	8L 32CLX	MODEL	
ENGINE NO.	56833	SER. NO.	
Quantities		FREQUENCY	50 HZ
OUTPUT	3580PS 2600 KW	POLES	8 P
R/MIN	600RPM	PF	0.8
WEIGHT	65000	VOLTAGE	6600 V
YEAR	1997	PRICE	



<b>NIIGATA 16V-25AX 2000KW</b>			
<b>ENGINE</b>		<b>ALTERNATOR</b>	
ENGINE MODEL	16V-25AX	MODEL	
ENGINE NO.		SER. NO.	
Quantities		FREQUENCY	50HZ
OUTPUT	2000 KW 2500KVA	POLES	8
R/MIN	750 RPM	PF	
WEIGHT	26,000 KG	VOLTAGE	3300 V
YEAR	1989	PRICE	



<b>NIIGATA 6PA5L</b>			
<b>ENGINE</b>		<b>ALTERNATOR</b>	
ENGINE MODEL	6PA5L	MODEL	902404A1A-2
ENGINE NO.		SER. NO.	
Quantities	2	FREQUENCY	60 HZ
OUTPUT	996KW	POLES	8
R/MIN	900 RPM	PF	0.85
WEIGHT		VOLTAGE	6600 V
YEAR	July.1989	PRICE	



<b>MITSUBISHI 6KU-30B</b>			
<b>ENGINE</b>		<b>ALTERNATOR</b>	
ENGINE MODEL	6KU30B	MODEL	
ENGINE NO.		SER. NO.	D142004
Quantities	2 UNITS	FREQUENCY	60HZ
OUTPUT	2590KW	POLES	
R/MIN	720RPM	PF	
WEIGHT		VOLTAGE	
YEAR	Jul.2004	PRICE	



## MITSUBISHI S16U-PTK

ENGINE		ALTERNATOR	
ENGINE MODEL	S16U-PTK	MODEL	
ENGINE NO.	10034	SER. NO.	200299A1A
Quantities		FREQUENCY	60HZ
OUTPUT	1950KW	POLES	8
R/MIN	900RPM	PF	0.8
WEIGHT	7820 KG	VOLTAGE	6600 V
YEAR		PRICE	



## MITSUBISHI S6U-PTK

ENGINE		ALTERNATOR	
ENGINE MODEL	S6U-PTK	MODEL	
ENGINE NO.		SER. NO.	
Quantities		FREQUENCY	50 HZ
OUTPUT	1049 KW	POLES	
R/MIN	1000 RPM	PF	
WEIGHT		VOLTAGE	
YEAR		PRICE	



## CAT PSG2250 (3516B)

ENGINE		ALTERNATOR	
ENGINE MODEL	PSG2250	MODEL	
ENGINE NO.		SER. NO.	
Quantities	2 UNITS	FREQUENCY	50HZ
OUTPUT	1800KW	POLES	
R/MIN		PF	
WEIGHT		VOLTAGE	6600VOLT
YEAR	2007	PRICE	



## MITSUBISHI S6U2-PTK

ENGINE		ALTERNATOR	
ENGINE MODEL	S6U2-PTK	MODEL	S6U-20340 S6U-20339
ENGINE NO.		SER. NO.	
Quantities		FREQUENCY	50 HZ
OUTPUT	1075 KW	POLES	
R/MIN	1000 RPM	PF	
WEIGHT		VOLTAGE	6600 V
YEAR	MAY.2002	PRICE	



## DAIHATSU 8DV-26

ENGINE		ALTERNATOR	
ENGINE MODEL	8DV-26	MODEL	
ENGINE NO.	D862016V	SER. NO.	5R6829
Quantities		FREQUENCY	50/60 HZ
OUTPUT	2500/3000KVA 2000/2400KW	POLES	10
R/MIN	600/720 RPM	PF	0.8
WEIGHT	28,000 KG	VOLTAGE	6600V
YEAR	1969	PRICE	



## Daihatsu 6DK - 26

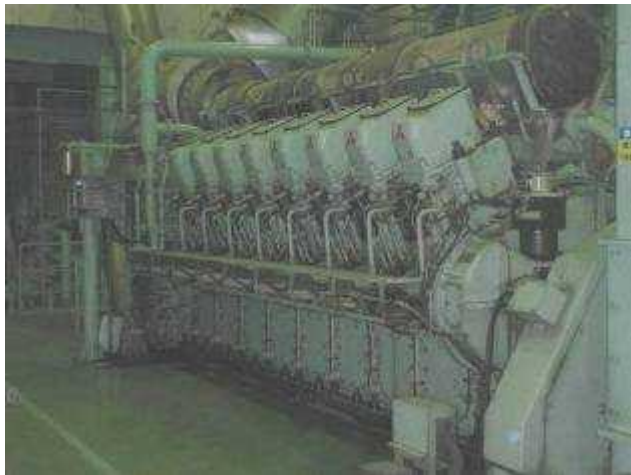
ENGINE		ALTERNATOR	
ENGINE MODEL	6DK - 26	MODEL	
ENGINE NO.		SER. NO.	
Quantities		FREQUENCY	60HZ
OUTPUT	1527 KW	POLES	
R/MIN	720 RPM	PF	
WEIGHT		VOLTAGE	6600V
YEAR	May.2001	PRICE	





<b>DAIHATSU 8DK-28</b>			
<b>ENGINE</b>		<b>ALTERNATOR</b>	
ENGINE MODEL	8DK-28	MODEL	
ENGINE NO.		SER. NO.	911970-1
Quantities	3 UNITS	FREQUENCY	
OUTPUT	2000KW * 3	POLES	8
R/MIN	900 min <sup>-1</sup>	PF	0.8
WEIGHT		VOLTAGE	6600V
YEAR	2001	PRICE	

## HFO 3000KW ↑



<b>MITSUBISHI 16KU30A</b>			
<b>ENGINE</b>		<b>ALTERNATOR</b>	
ENGINE MODEL	16KU30A	MODEL	
ENGINE NO.		SER. NO.	D138261
Quantities		FREQUENCY	60hz
OUTPUT	5000KW	POLES	10
R/MIN	720 RPM	PF	0.9
WEIGHT		VOLTAGE	6600V
YEAR	1999	PRICE	



<b>Mitsubishi 18KU30A 1997</b>			
<b>ENGINE</b>		<b>ALTERNATOR</b>	
ENGINE MODEL	18KU30A	MODEL	
ENGINE NO.	D138223	SER. NO.	EFA091V0101
Quantities		FREQUENCY	50 HZ
OUTPUT	8000 PS 6647 KVA	POLES	8
R/MIN	750 RPM	PF	0.85
WEIGHT	19000 KG	VOLTAGE	6600 V
YEAR	1997	PRICE	



<b>MITSUBISHI 18KU30A 2000</b>			
<b>ENGINE</b>		<b>ALTERNATOR</b>	
ENGINE MODEL	18KU30A	MODEL	
ENGINE NO.	D138263	SER. NO.	99EH9HA0FA010 2
Quantities		FREQUENCY	50 HZ
OUTPUT	5884 KW 6647KVA	POLES	8
R/MIN	750 rpm	PF	0.85
WEIGHT		VOLTAGE	6600V
YEAR	2000. 3	PRICE	



<b>Niigata 16V32CL</b>			
<b>ENGINE</b>		<b>ALTERNATOR</b>	
ENGINE MODEL	<b>16V32CLX</b>	MODEL	
ENGINE NO.	<b>57146</b>	SER. NO.	<b>202875A1A-1</b>
Quantities	<b>3</b>	FREQUENCY	<b>60HZ</b>
OUTPUT	<b>5700KW</b>	POLES	<b>12</b>
R/MIN	<b>600 MIN<sup>-1</sup></b>	PF	<b>0.8</b>
WEIGHT	<b>23.4 TON</b>	VOLTAGE	<b>3300 V</b>
YEAR	<b>2002 AUG</b>	PRICE	<b>55.5 TON</b>



<b>Mitsubishi 18KU30GA Gas Fired Generators</b>			
<b>ENGINE</b>		<b>ALTERNATOR</b>	
ENGINE MODEL	18KU30GA	SER. NO.	
ENGINE NO.	0138281	FREQUENCY	50Hz
OUTPUT	5,750kw	POLES	8
R/MIN	750rpm	PF	
WEIGHT	60 Ton	VOLTAGE	11000 V
YEAR	2003	PRICE	
Number	10 UNITS	TYPE	Gas Engine Generator
Stroke	380mm		



<b>NIIGATA 16V26HX</b>			
<b>ENGINE</b>		<b>ALTERNATOR</b>	
ENGINE MODEL	<b>16V26HX</b>	MODEL	<b>8S8850R1</b>
ENGINE NO.		SER. NO.	
Quantities		FREQUENCY	<b>50 HZ</b>
OUTPUT	<b>3350 KW</b>	POLES	<b>6</b>
R/MIN	<b>1000 RPM</b>	PF	<b>0.8</b>
WEIGHT		VOLTAGE	<b>3300 V</b>
YEAR	<b>1996</b>	PRICE	



<b>Niigata 16V32CX</b>			
<b>ENGINE</b>		<b>ALTERNATOR</b>	
ENGINE MODEL	16V32CX	MODEL	
ENGINE NO.		SER. NO.	8N9265R1 D
Quantities		FREQUENCY	60 HZ
OUTPUT	5000KW	POLES	10
R/MIN	720rpm	PF	0.8
WEIGHT	120 TON	VOLTAGE	3300 V
YEAR	1990	PRICE	



<b>Niigata 16V32CX</b>			
<b>ENGINE</b>		<b>ALTERNATOR</b>	
ENGINE MODEL		MODEL	
ENGINE NO.		SER. NO.	
Quantities		FREQUENCY	6 0 Hz
OUTPUT	5000 KW	POLES	1 0 P
R/MIN	720 rpm	PF	0.8 5 PF
WEIGHT		VOLTAGE	3,3 0 0 V
YEAR	JULY 1990	PRICE	

<b>NIIGATA 18V32CLX</b>			
<b>ENGINE</b>		<b>ALTERNATOR</b>	
ENGINE MODEL	18V32CLX	MODEL	TAIYO
ENGINE NO.		SER. NO.	
Quantities	2	FREQUENCY	60Hz
OUTPUT	6200KW	POLES	
R/MIN	600rpm	PF	0.8
WEIGHT		VOLTAGE	11,400V
YEAR		PRICE	



<b>NIIGATA 18V32CX</b>			
<b>ENGINE</b>		<b>ALTERNATOR</b>	
ENGINE MODEL	18V32CX	MODEL	JEC-114-1979
ENGINE NO.	55037	SER. NO.	910326-1
Quantities		FREQUENCY	50HZ
OUTPUT	7750PS, 5500Kw	POLES	8p
R/MIN	750 rpm	PF	
WEIGHT	63 tons	VOLTAGE	6600V
YEAR	1987	PRICE	



<b>WARTSILA 18V-26</b>			
<b>ENGINE</b>		<b>ALTERNATOR</b>	
ENGINE MODEL	18V26 H9G 900 SH6	MODEL	
ENGINE NO.		SER. NO.	
Quantities		FREQUENCY	50 Hz
OUTPUT	5,000 KW	POLES	
R/MIN	1,000 RPM	PF	0.8
WEIGHT	70,000 KG	VOLTAGE	6,300 Volts
YEAR	1996	PRICE	



## Diesel Generators



<b>Mitsubishi 6D22TC</b>			
<b>ENGINE</b>		<b>ALTERNATOR</b>	
ENGINE MODEL	6D22TC PG230PY	MODEL	
ENGINE NO.	067	SER. NO.	
Quantities	1	FREQUENCY	50 / 60 Hz
OUTPUT	200 KVA	POLES	4
R/MIN	1500 RPM	PF	0.8
WEIGHT		VOLTAGE	200 V
YEAR	Dec. 2003	PRICE	



<b>Mitsubishi 6D22TC</b>			
<b>ENGINE</b>		<b>ALTERNATOR</b>	
ENGINE MODEL	6D22TC PG230PY	MODEL	
ENGINE NO.		SER. NO.	
Quantities	1	FREQUENCY	50 / 60 Hz
OUTPUT	200 KVA	POLES	4
R/MIN	1500 RPM	PF	0.8
WEIGHT		VOLTAGE	200 V
YEAR	Dec. 2003	PRICE	



<b>MITSUBISHI S6U2-PTK 2 UNITS</b>			
<b>ENGINE</b>		<b>ALTERNATOR</b>	
ENGINE MODEL	<b>S6U2-PTK</b>	MODEL	
ENGINE NO.	20089	SER. NO.	8P8132R1
Quantities	2 Units	FREQUENCY	50 HZ
OUTPUT	1000 KW	POLES	8
R/MIN	1000 RPM	PF	0.8
WEIGHT	18.4 TON	VOLTAGE	6600 V
YEAR	Dec. 1990	PRICE	



<b>YARMAR 6HAL-HT</b>			
<b>ENGINE</b>		<b>ALTERNATOR</b>	
ENGINE MODEL	6HAL-HT	MODEL	
ENGINE NO.		SER. NO.	
Quantities		FREQUENCY	60 HZ
OUTPUT	561 KVA 448KW	POLES	4
R/MIN	1800 RPM	PF	
WEIGHT		VOLTAGE	
YEAR	240 PS	PRICE	



<b>YANMAR 12NHL-ST</b>			
<b>ENGINE</b>		<b>ALTERNATOR</b>	
ENGINE MODEL	12NHL-ST	MODEL	
ENGINE NO.	T5-4072	SER. NO.	1S9103R1
Quantities		FREQUENCY	50 HZ
OUTPUT	390 KW 1000 KVA	POLES	0.8
R/MIN	1500 RPM	PF	4
WEIGHT	2050 KG	VOLTAGE	6600 V
YEAR	JULY.1996	PRICE	



<b>MITSUBISHI PS660</b>			
<b>ENGINE</b>		<b>ALTERNATOR</b>	
ENGINE MODEL	PS660	MODEL	
ENGINE NO.	S12A2-PTA	SER. NO.	
Quantities		FREQUENCY	50 HZ
OUTPUT	660 KW	POLES	4
R/MIN	1500 RPM	PF	
WEIGHT		VOLTAGE	6600 V
YEAR	2004	PRICE	



## MITSUBISHI S16N-PTK

ENGINE		ALTERNATOR	
ENGINE MODEL	S-16N	MODEL	
ENGINE NO.		SER. NO.	
Quantities		FREQUENCY	50 / 60 HZ
OUTPUT	1500 KVA 1200 KW	POLES	
R/MIN	1500 RPM	PF	
WEIGHT		VOLTAGE	
YEAR		PRICE	



## MITSUBISHI S16R-PTA

ENGINE		ALTERNATOR	
ENGINE MODEL	PS-1900	MODEL	
ENGINE NO.	S16R-PTAA2	SER. NO.	
Quantities		FREQUENCY	50 HZ
OUTPUT	1900KW	POLES	
R/MIN	1500 RPM	PF	
WEIGHT		VOLTAGE	380v/220v
YEAR	2004.May	PRICE	



## Mitsubishi 18KU30

ENGINE		ALTERNATOR	
ENGINE MODEL	<b>18KU30</b>	MODEL	
ENGINE NO.		SER. NO.	<b>ABA279H0101</b>
Quantities	<b>1</b>	FREQUENCY	<b>60 HZ</b>
OUTPUT	<b>5050 KW</b>	POLES	<b>10</b>
R/MIN	<b>720 RPM</b>	PF	<b>0.9</b>
WEIGHT	<b>Abt. 45 TON</b>	VOLTAGE	<b>3450 V</b>
YEAR	<b>1988</b>	PRICE	



<b>DAIHATSU 8DK28</b>			
<b>ENGINE</b>		<b>ALTERNATOR</b>	
ENGINE MODEL	<b>8DK28</b>	MODEL	<b>NISHISHIBA</b>
ENGINE NO.		SER. NO.	<b>904419A50A-3</b>
Quantities	<b>3 units</b>	FREQUENCY	<b>50 HZ</b>
OUTPUT	<b>2000 KW * 3</b>	POLES	<b>8</b>
R/MIN	<b>750 MIN<sup>-1</sup></b>	PF	<b>0.8</b>
WEIGHT		VOLTAGE	<b>6600 V</b>
YEAR	<b>May,2003</b>	PRICE	<b>April,2003</b>



<b>MITSUBISHI S12A2-TA</b>			
<b>ENGINE</b>		<b>ALTERNATOR</b>	
ENGINE MODEL	PS-660	MODEL	
ENGINE NO.	S12A2-TA	SER. NO.	
Quantities		FREQUENCY	50 HZ
OUTPUT	660KW	POLES	4
R/MIN	1500 RPM	PF	
WEIGHT		VOLTAGE	380/220V
YEAR	2003	PRICE	



<b>MITSUBISHI S12A2</b>			
<b>ENGINE</b>		<b>ALTERNATOR</b>	
ENGINE MODEL	<b>S12A2</b>	MODEL	
ENGINE NO.		SER. NO.	
Quantities		FREQUENCY	<b>50 HZ</b>
OUTPUT	<b>660 KW</b>	POLES	
R/MIN	<b>1500 RPM</b>	PF	
WEIGHT		VOLTAGE	
YEAR		PRICE	





<b>Mitsubishi S6N-MPTK</b>			
<b>ENGINE</b>		<b>ALTERNATOR</b>	
ENGINE MODEL	S6N-MPTK	MODEL	
ENGINE NO.	12958	SER. NO.	
Quantities		FREQUENCY	
OUTPUT	480 PS 353 KW	POLES	
R/MIN	1200 RPM	PF	
WEIGHT		VOLTAGE	
YEAR	March.1989	PRICE	



<b>MITSUBISHI S6A</b>			
<b>ENGINE</b>		<b>ALTERNATOR</b>	
ENGINE MODEL	S6A	MODEL	
ENGINE NO.		SER. NO.	
Quantities		FREQUENCY	50HZ
OUTPUT	400 KW	POLES	
R/MIN	1500 RPM	PF	
WEIGHT		VOLTAGE	
YEAR		PRICE	



<b>MITSUBHISHI S16R-PTA</b>			
<b>ENGINE</b>		<b>ALTERNATOR</b>	
ENGINE MODEL	PS-1600	MODEL	
ENGINE NO.	S16R-PTA	SER. NO.	
Quantities		FREQUENCY	50 HZ
OUTPUT	1600KW	POLES	4
R/MIN	1500 RPM	PF	
WEIGHT	6200 KG	VOLTAGE	380/220V
YEAR	1995	PRICE	



<b>Mitsubishi 8DC-9T</b>			
<b>ENGINE</b>		<b>ALTERNATOR</b>	
ENGINE MODEL	8DC-9T	MODEL	
ENGINE NO.	8DC9-448803	SER. NO.	M12094305
Quantities	3	FREQUENCY	50/60 HZ
OUTPUT	213 KVA 170 KW	POLES	4
R/MIN	1500/1800	PF	0.8
WEIGHT		VOLTAGE	6600 V
YEAR	2001	PRICE	



<b>mitsubishi 8DC70A</b>			
<b>ENGINE</b>		<b>ALTERNATOR</b>	
ENGINE MODEL		MODEL	
ENGINE NO.	40242	SER. NO.	
Quantities		FREQUENCY	60 HZ
OUTPUT	305 PS 224 KW	POLES	
R/MIN	2500 PRM	PF	
WEIGHT		VOLTAGE	
YEAR		PRICE	



<b>MITSUBISHI 6D-22T</b>			
<b>ENGINE</b>		<b>ALTERNATOR</b>	
ENGINE MODEL	6D-22T	MODEL	
ENGINE NO.		SER. NO.	
Quantities		FREQUENCY	50HZ
OUTPUT	200 KVA 160 KW	POLES	
R/MIN	1500 RPM	PF	
WEIGHT		VOLTAGE	220 v / 440 v
YEAR		PRICE	



<b>MITSUBHISHI S12A2-PTA</b>			
<b>ENGINE</b>		<b>ALTERNATOR</b>	
ENGINE MODEL	765M	MODEL	
ENGINE NO.	S12A2-PTA	SER. NO.	
Quantities		FREQUENCY	60Hz
OUTPUT	750KW 1005HP	POLES	
R/MIN	1800 RPM	PF	
WEIGHT		VOLTAGE	
YEAR		PRICE	



<b>MITSUBHISHI S16R-PTAA2</b>			
<b>ENGINE</b>		<b>ALTERNATOR</b>	
ENGINE MODEL	PS-1900	MODEL	
ENGINE NO.	S16R-PTAA2	SER. NO.	16565-01
Quantities		FREQUENCY	50 HZ
OUTPUT	1760KW 2200KVA	POLES	4
R/MIN	1500 PRM	PF	0.8
WEIGHT		VOLTAGE	380/220V
YEAR	2004	PRICE	



<b>Mitsubishi 6D22TC</b>			
<b>ENGINE</b>		<b>ALTERNATOR</b>	
ENGINE MODEL	<b>6D22TC PG230PY</b>	MODEL	
ENGINE NO.	<b>067</b>	SER. NO.	
Quantities	<b>1</b>	FREQUENCY	<b>50 / 60 Hz</b>
OUTPUT	<b>200 KVA</b>	POLES	<b>4</b>
R/MIN	<b>1500 RPM</b>	PF	<b>0.8</b>
WEIGHT		VOLTAGE	<b>200 V</b>
YEAR	<b>Dec. 2003</b>	PRICE	



<b>Mitsubishi 6D22TC</b>			
<b>ENGINE</b>		<b>ALTERNATOR</b>	
ENGINE MODEL	<b>6D22TC PG230PY</b>	MODEL	
ENGINE NO.		SER. NO.	
Quantities	<b>1</b>	FREQUENCY	<b>50 / 60 Hz</b>
OUTPUT	<b>200 KVA</b>	POLES	<b>4</b>
R/MIN	<b>1500 RPM</b>	PF	<b>0.8</b>
WEIGHT		VOLTAGE	<b>200 V</b>
YEAR	<b>Dec. 2003</b>	PRICE	



<b>MITSUBISHI_18KU30_1988</b>			
<b>ENGINE</b>		<b>ALTERNATOR</b>	
ENGINE MODEL	<b>18KU30</b>	MODEL	
ENGINE NO.		SER. NO.	<b>T190003A1A</b>
Quantities		FREQUENCY	<b>60 HZ</b>
OUTPUT	<b>5000 KW</b>	POLES	<b>10</b>
R/MIN	<b>720 RPM</b>	PF	<b>0.9</b>
WEIGHT	<b>47.5 ton</b>	VOLTAGE	<b>3300 V</b>
YEAR	<b>May 1988</b>	PRICE	



<b>MAN D2866 LE201 350KVA</b>			
<b>ENGINE</b>		<b>ALTERNATOR</b>	
ENGINE MODEL	D2866 LE201	MODEL	
ENGINE NO.	PS350	SER. NO.	
Quantities		FREQUENCY	60 HZ
OUTPUT	350KVA	POLES	4
R/MIN	1800 rpm	PF	
WEIGHT		VOLTAGE	
YEAR		PRICE	

<b>MAN D2866 LE401-6R</b>			
<b>ENGINE</b>		<b>ALTERNATOR</b>	
ENGINE MODEL	E-600	MODEL	
ENGINE NO.	D2866 LE401	SER. NO.	
Quantities		FREQUENCY	
OUTPUT	590HP/440KW	POLES	
R/MIN	2200RPM	PF	
WEIGHT		VOLTAGE	
YEAR	2002	PRICE	



<b>MAN D2848 LXE401</b>			
<b>ENGINE</b>		<b>ALTERNATOR</b>	
ENGINE MODEL	E-650	MODEL	
ENGINE NO.	D2848 LXE401	SER. NO.	
Quantities		FREQUENCY	
OUTPUT	500 KW 680 BHP	POLES	
R/MIN	2300 RPM	PF	
WEIGHT		VOLTAGE	
YEAR	2000	PRICE	



<b>MAN D2840 LE201</b>			
<b>ENGINE</b>		<b>ALTERNATOR</b>	
ENGINE MODEL	2840 LE201	MODEL	
ENGINE NO.		SER. NO.	
Quantities		FREQUENCY	50 Hz
OUTPUT	6,150KVA 500KW	POLES	
R/MIN	1,000 rpm	PF	
WEIGHT	70,000 KG Skid mounted sets.	VOLTAGE	6,300 v
YEAR		PRICE	

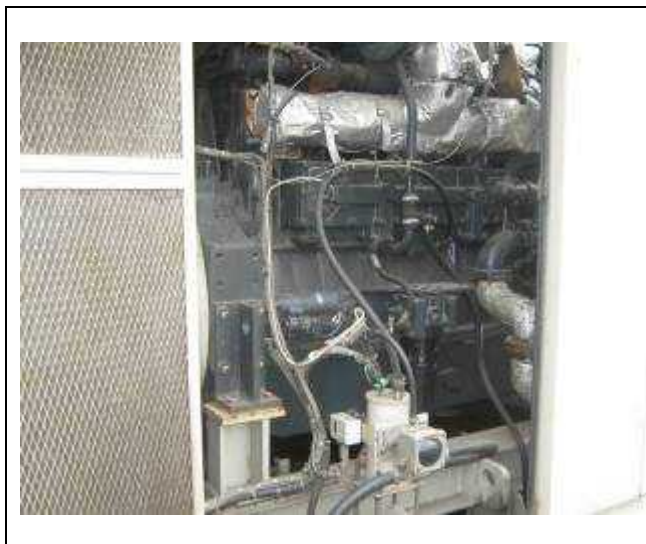




<b>KOMATSU SAA6 D170E-3</b>			
<b>ENGINE</b>		<b>ALTERNATOR</b>	
ENGINE MODEL	SAA6D170E-3	MODEL	
ENGINE NO.	313594	SER. NO.	
Quantities		FREQUENCY	60HZ
OUTPUT	574KW	POLES	6
R/MIN	1800RPM	PF	0.8
WEIGHT		VOLTAGE	220/380/440 V
YEAR	2001	PRICE	



<b>Komatsu S6D170 A1</b>			
<b>ENGINE</b>		<b>ALTERNATOR</b>	
ENGINE MODEL	S6D170 A1	MODEL	
ENGINE NO.	802610PA1A-1	SER. NO.	
Quantities		FREQUENCY	50 HZ
OUTPUT	390 KW	POLES	4
R/MIN	1500	PF	0.8
WEIGHT	2050 KG	VOLTAGE	6600 V
YEAR	1998.MAY	PRICE	



<b>Komatsu S12V-140</b>			
<b>ENGINE</b>		<b>ALTERNATOR</b>	
ENGINE MODEL	S12V-140	MODEL	
ENGINE NO.		SER. NO.	
Quantities		FREQUENCY	50 HZ
OUTPUT	800 KW	POLES	4
R/MIN	1500 RPM	PF	0.8
WEIGHT	10050 KG	VOLTAGE	380 V
YEAR	2001	PRICE	



<b>Komatsu S12V-140</b>			
<b>ENGINE</b>		<b>ALTERNATOR</b>	
ENGINE MODEL		MODEL	
ENGINE NO.		SER. NO.	
Quantities		FREQUENCY	60 HZ
OUTPUT	500 KW	POLES	
R/MIN	1200 RPM	PF	
WEIGHT		VOLTAGE	
YEAR		PRICE	



<b>KOMATSU S6D170-A1</b>			
<b>ENGINE</b>		<b>ALTERNATOR</b>	
ENGINE MODEL	PSS-550	MODEL	
ENGINE NO.	S6D170-A1	SER. NO.	
Quantities		FREQUENCY	60HZ
OUTPUT	550KW	POLES	
R/MIN	1500 RPM	PF	
WEIGHT		VOLTAGE	
YEAR	1998	PRICE	



<b>KOMATSU 6D170E</b>			
<b>ENGINE</b>		<b>ALTERNATOR</b>	
ENGINE MODEL	SAA6D170E3	MODEL	ESS-495-SCRN6
ENGINE NO.	00311611	SER. NO.	9850079
Quantities		FREQUENCY	50 HZ
OUTPUT	495KW	POLES	4
R/MIN	1500 rpm	PF	0.8
WEIGHT	13600 KG	VOLTAGE	6600 v
YEAR	2004	PRICE	



<b>DAEWOO DGQ-600</b>			
<b>ENGINE</b>		<b>ALTERNATOR</b>	
ENGINE MODEL	DGQ-600	MODEL	
ENGINE NO.		SER. NO.	
Quantities		FREQUENCY	
OUTPUT	730 KVA 584 KW	POLES	
R/MIN		PF	
WEIGHT		VOLTAGE	208 / 416 V
YEAR	1986.12.31	PRICE	



<b>CUMMINS VTA-1710</b>			
<b>ENGINE</b>		<b>ALTERNATOR</b>	
ENGINE MODEL	PS-500	MODEL	
ENGINE NO.	VTA-1710	SER. NO.	
Quantities		FREQUENCY	50HZ
OUTPUT	500 KW	POLES	
R/MIN	1500rpm	PF	
WEIGHT		VOLTAGE	
YEAR	1997	PRICE	



<b>CUMMINS NTA855-G4</b>			
<b>ENGINE</b>		<b>ALTERNATOR</b>	
ENGINE MODEL	NTA855-G4	MODEL	STANDFORD-300
ENGINE NO.	NA	SER. NO.	NA
Quantities	3	FREQUENCY	50 HZ
OUTPUT	312KW	POLES	4 POLE
R/MIN	1500RPM	PF	0.85
WEIGHT	2600KG	VOLTAGE	220V/380V/ 440V
YEAR	1997	PRICE	





## CUMMINS KTTA50 G2

ENGINE		ALTERNATOR	
ENGINE MODEL	KTTA 50 G2 PS-1200	MODEL	
ENGINE NO.	5013	SER. NO.	
Quantities		FREQUENCY	50 HZ
OUTPUT	1500 KVA 1200 KW	POLES	4
R/MIN	1500 RPM	PF	0.8
WEIGHT		VOLTAGE	380/220 V
YEAR	Apr.2004	PRICE	



## CATERPILLAR 3516B

ENGINE		ALTERNATOR	
ENGINE MODEL	CAT3516B	MODEL	
ENGINE NO.		SER. NO.	GZS00687
Quantities		FREQUENCY	60HZ
OUTPUT	2000KW	POLES	
R/MIN		PF	
WEIGHT		VOLTAGE	
YEAR	2007	PRICE	



## CATERPILLAR CAT3516-TA

ENGINE		ALTERNATOR	
ENGINE MODEL	PS-1500	MODEL	
ENGINE NO.	3516-TA	SER. NO.	
Quantities		FREQUENCY	50 HZ
OUTPUT	1500 KW	POLES	4
R/MIN	1500 RPM	PF	
WEIGHT		VOLTAGE	
YEAR	2002	PRICE	



<b>CATERPILLAR 3412 SI-TA</b>			
<b>ENGINE</b>		<b>ALTERNATOR</b>	
ENGINE MODEL	3412 SI	MODEL	
ENGINE NO.		SER. NO.	7DB00510
Quantities		FREQUENCY	50 HZ
OUTPUT	380 KW 475 KVA	POLES	
R/MIN		PF	
WEIGHT		VOLTAGE	380 V
YEAR		PRICE	



<b>CATERPILLAR 3406 TA</b>			
<b>ENGINE</b>		<b>ALTERNATOR</b>	
ENGINE MODEL	3406 TA	MODEL	
ENGINE NO.		SER. NO.	
Quantities		FREQUENCY	60 HZ
OUTPUT	320 KW	POLES	
R/MIN	1800 RPM	PF	
WEIGHT		VOLTAGE	
YEAR	1987	PRICE	



<b>Caterpillar CAT3406</b>			
<b>ENGINE</b>		<b>ALTERNATOR</b>	
ENGINE MODEL	CAT3406	MODEL	
ENGINE NO.	3406	SER. NO.	
Quantities		FREQUENCY	50 HZ
OUTPUT	272 KWE 365 HP	POLES	
R/MIN	1800 RPM	PF	0.8
WEIGHT	3720 KG	VOLTAGE	
YEAR	2000	PRICE	



<b>CATERPILLAR CAT3412</b>			
<b>ENGINE</b>		<b>ALTERNATOR</b>	
ENGINE MODEL	CAT3412	MODEL	
ENGINE NO.		SER. NO.	
Quantities		FREQUENCY	
OUTPUT	800KWe 1073BHP	POLES	
R/MIN	1200 RPM	PF	
WEIGHT		VOLTAGE	
YEAR	1995	PRICE	



<b>CATERPILLAR CAT3508</b>			
<b>ENGINE</b>		<b>ALTERNATOR</b>	
ENGINE MODEL	PS6-500	MODEL	
ENGINE NO.	3508-TA	SER. NO.	70200560
Quantities		FREQUENCY	60 HZ
OUTPUT	500 KW	POLES	6
R/MIN	1200 RPM	PF	
WEIGHT		VOLTAGE	
YEAR	2004	PRICE	



<b>Caterpillar CAT3512</b>			
<b>ENGINE</b>		<b>ALTERNATOR</b>	
ENGINE MODEL	PS1000	MODEL	
ENGINE NO.	3512-TA	SER. NO.	
Quantities		FREQUENCY	50 HZ
OUTPUT	1000 KW	POLES	
R/MIN		PF	
WEIGHT		VOLTAGE	
YEAR	2004	PRICE	



<b>DAIHATSU 6DK-36</b>			
<b>ENGINE</b>		<b>ALTERNATOR</b>	
ENGINE MODEL	<b>6DK-36</b>	MODEL	<b>HEK700-12</b>
ENGINE NO.	<b>DK636Z0043</b>	SER. NO.	
Quantities	<b>2</b>	FREQUENCY	<b>60 HZ</b>
OUTPUT	<b>2898 KW * 2</b>	POLES	<b>12</b>
R/MIN	<b>600 RPM</b>	PF	<b>0.8</b>
WEIGHT		VOLTAGE	<b>6600 V</b>
YEAR	<b>July 2003</b>	PRICE	



<b>Mitsubishi S6U2-PTK</b>			
<b>ENGINE</b>		<b>ALTERNATOR</b>	
ENGINE MODEL	<b>S6U2-PTK</b>	MODEL	
ENGINE NO.	<b>20204</b>	SER. NO.	<b>230279</b>
Quantities	<b>1</b>	FREQUENCY	<b>50 HZ</b>
OUTPUT	<b>1310 PS</b>	POLES	<b>6</b>
R/MIN	<b>1000 rpm</b>	PF	<b>0.8</b>
WEIGHT		VOLTAGE	<b>6600 V</b>
YEAR	<b>June 1995</b>	PRICE	



<b>Mitsubishi S6U2-PTK</b>			
<b>ENGINE</b>		<b>ALTERNATOR</b>	
ENGINE MODEL	<b>S6U2-PTK</b>	MODEL	<b>TAIYO HEB53Y-6</b>
ENGINE NO.		SER. NO.	
Quantities		FREQUENCY	<b>50HZ</b>
OUTPUT	<b>1462PS 1075KW</b>	POLES	
R/MIN	<b>1000 min<sup>-1</sup></b>	PF	
WEIGHT		VOLTAGE	<b>6600VOLT</b>
YEAR	<b>May. 2000</b>	PRICE	



## MITUSBISHI\_S6U-PTA

ENGINE		ALTERNATOR	
ENGINE MODEL	S6U-PTA	MODEL	
ENGINE NO.	10177	SER. NO.	903274A1A-1
Quantities	1	FREQUENCY	60 HZ
OUTPUT	1040 PS	POLES	8
R/MIN	900 rpm	PF	0.8
WEIGHT		VOLTAGE	6600 V
YEAR	Aug.1994	PRICE	



## Mitsubishi S6U-PTA

ENGINE		ALTERNATOR	
ENGINE MODEL	S6U-PTA	MODEL	
ENGINE NO.	10177	SER. NO.	903274A1A-1
Quantities	3	FREQUENCY	60HZ
OUTPUT	650KW	POLES	8
R/MIN	900 rpm	PF	0.8
WEIGHT		VOLTAGE	6600 V
YEAR	1994	PRICE	

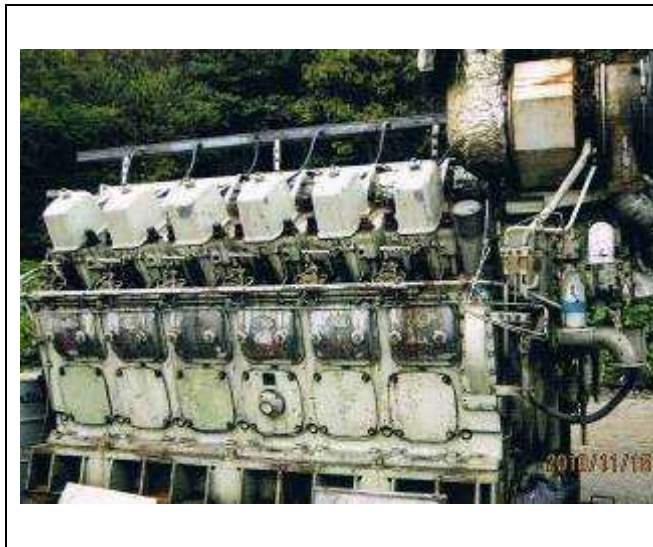


## CAT PSG2250 (3516B)

ENGINE		ALTERNATOR	
ENGINE MODEL	PSG2250	MODEL	
ENGINE NO.		SER. NO.	
Quantities	2 UNITS	FREQUENCY	50HZ
OUTPUT	1800KW	POLES	
R/MIN		PF	
WEIGHT		VOLTAGE	6600VOLT
YEAR	2007	PRICE	



<b>DAIHATSU 8DK-28</b>			
<b>ENGINE</b>		<b>ALTERNATOR</b>	
ENGINE MODEL	<b>8DK-28</b>	MODEL	
ENGINE NO.		SER. NO.	<b>911970-1</b>
Quantities	<b>3 UNITS</b>	FREQUENCY	
OUTPUT	<b>2000KW</b>	POLES	<b>8</b>
R/MIN	<b>900 min<sup>-1</sup></b>	PF	<b>0.8</b>
WEIGHT		VOLTAGE	<b>6600V</b>
YEAR	<b>2001</b>	PRICE	



<b>Niigata 12PA5V</b>			
<b>ENGINE</b>		<b>ALTERNATOR</b>	
ENGINE MODEL	<b>12PA5V</b>	MODEL	
ENGINE NO.	<b>16939</b>	SER. NO.	<b>851550A1A</b>
Quantities	<b>2</b>	FREQUENCY	<b>50 HZ</b>
OUTPUT	<b>2000 KW</b>	POLES	<b>6</b>
R/MIN	<b>1000 RPM</b>	PF	<b>0.9</b>
WEIGHT		VOLTAGE	<b>3300 V</b>
YEAR	<b>June, 1971</b>	PRICE	