




## Bluetooth V2.1 SPP RS-485 Serial Adapter V2.0

Model: S2B2485IV2 (Internal antenna, Male DB9)

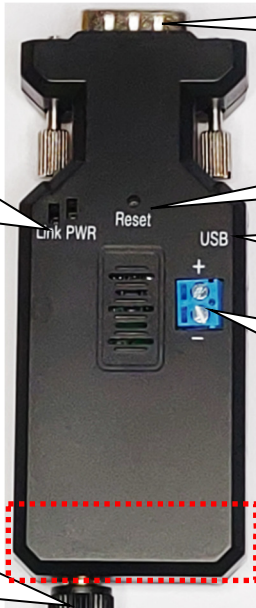
Model: S2B2485EV2 (External antenna, Male DB9)

### 1. Package content:

<p>Bluetooth RS-485 adapter</p>  <p>White Box Dimension: 11 x 6 x 5 (cm) Total Package Weight: 98g (Internal Antenna), 108g (External Antenna)</p> 	<p>Package Contents:</p> <ul style="list-style-type: none"> <li>● Bluetooth RS-485 adapter x 1</li> <li>● A4 User manual x 1</li> <li>● Mini USB Cable x 1</li> </ul> 
---	--

### 2. Profile:

#### 2.1 Top view:



LED:  
Link: Blue  
PWR/Data: Red

DB9 (Female)

Reset to Default

Mini USB (Power)

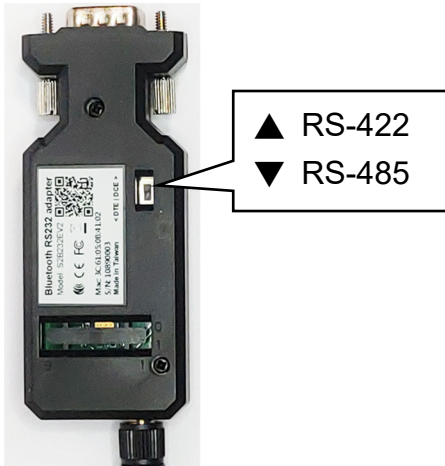
▲ + (5~40 VDC)  
▼ GND

Antenna Inside  
(Keep clear area for internal antenna only)

Antenna connector  
(External antenna)

LED Status	Description
Red LED solid on	Power On
Blue LED solid on	Bluetooth Link
Blue LED flash	Bluetooth not Link
Both LED off	DFU mode

**2.2 Rear Side:**



**3. Power supply:**

3.1 Voltage: 5~40 VDC, **Don't exceed the limit.**

3.2 There're 3 ways to power the adapter: Mini USB, 2P Terminal Block (Blue) and pin9 of DB9, please choose one. **Don't power the adapter by more than one source.**

3.3 The mini USB to type A cable is inside the standard package.

**4. Guide:**

4.1 Default value:

- Baud rate: 9,600 bps
- Data bit: 8
- Parity: none
- Stop bit: 1
- Flow control: none
- Device Name: Serial Adapter
- Pin: (None), The value will be authenticated by the master and slave.
- Mode: Default is "Slave", The adapter can be configured the "Master" by the command "role=m".

4.2 If the PC not built in the Bluetooth, please source the Bluetooth USB dongle or use the same adapter set as the "master". The built in Bluetooth of NB supports class 2 only, 10 meters. If you need 100 meters range, you will connect two adapters.

4.3 Slide Switch of "422/485", RS-485 supports 2 wires and RS-422 supports 4 wires connection.

4.4 Slave mode (default): Start the searching from the PC or smartphone and connect it.

4.5 Master mode: Set by the command "search=y" to find the Bluetooth slave devices and connect.

4.6 Reset Button: Pressed with a clip or pin into the hole on the top cover. Restore the factory settings (after over three seconds' press).

5. Setup Command set (any capital or lowercase combination is available)

Command	Value	Description
?		List all the command set
ADDRESS=?		This command is used to display the Bluetooth address of the local adaptor.
AT		Check the connection status between control terminal and the RS-485 adapter. Response: "OK" when the connection is ok. Response:

		“ERROR” when the connection is not ok.
AUTO=		This command is used to enable/disable auto-connection feature. It is available only when the adaptor is in the master role. All the slaves with the same pin code will be connected.
	Y	The Master role adapter will connect the latest paired Bluetooth device automatically.
(Default)	N	The user will connect the Bluetooth device manually.
	?	Inquire the current setting.
BAUD=		This command is used to specify the baud rate of COM port. The command will need 200 ms delay.
	1200	1200 bps
	2400	2400 bps
	4800	4800 bps
(Default)	9600	9600 bps
	19200	19200 bps
	38400	38400 bps
	57600	57600 bps
	115200	115200 bps
	230400	230400 bps
	?	Inquire the current baud rate.
BIT=		Data bit
	5	5 data bits
	6	6 data bits
	7	7 data bits
(Default)	8	8 data bits
	?	Inquire the data bit setting.
CONNECT=		This command is used to establish a connection manually. It is available only when the adaptor is in the master role.
	1~8	Connect the adaptor to a Bluetooth device in the neighborhood found through “SEARCH=?”
	xxxxxxxxxxxx	Connect the remote adapter by type the MAC address directly without searching.
	?	Display the MAC address of the latest paired device.
DEFAULT=Y		This command is used to restore the default settings and originate a warm start.
DFU=	Y	Switch to the firmware upgrade procedure, please disconnect the COM port when the adapter reply “OK”. Send the firmware file by the “Accessport” software, please check the link on page 6 section 9.3.
ECHO=		This command is used to specify whether the adaptor echoes characters received from the UART back to the DTE/DCE.
	N	Command characters received from the UART are not echoed back to the DTE/DCE.
(Default)	Y	Command characters received from the UART are echoed back to the DTE/DCE.
	?	Inquire the current setting.
FLOW=		This command enable or disable flow control signals (CTS/RTS) of the UART port. Note, the setting is not affected by DEFAULT.

		The command will need 1 second delay.
(Default)	N	Disable flow control.
	Y	Enable flow control.
	?	Inquire the current setting
KEY=		The key value will be created by the smart phone or Win10 devices when pairing with the slave adapter. Please type the same 6 numbers shown on the smart phone or Win10 devices within 15 seconds.
(Default)	N	
	Y	
	?	
MAC=		The mac. Address will be customized by the user. The master will connect the 2 <sup>nd</sup> slave with the same mac. address if the 1 <sup>st</sup> slave damaged.
	xxxxxxxxxx	The head of the address 0012, 0018, 0019 is available only.
	?	
NAME=		This command is used to specify a name for the adaptor. You can specify a friendly name using 0 to 9, A to Z, a to z, space and -, which are all valid characters. Note that "first space or -, last space or - isn't permitted". The default name is "Serial Adaptor".
(Default)	Serial Adaptor	Default device name
	xx....xx	"xx....xx" is a character string with the length from 2 to 30.
	R	Restore the default settings name="Serial Adaptor".
	?	Inquire the name of the local adaptor.
ONE=		The master will link with one paired or any nearby slave automatically. All the slaves with the same pin code will be connected. Once connected, the master will not change the paired slave until reset to default from the slave. The command is available under the command "auto=y".
(Default)	N	The master will link with any nearby slave automatically.
	Y	The master will link with the paired slave which is linked by the master before automatically.
	?	Inquire the current setting
PARITY=		This command is used to specify parity bit setting of COM port.
(Default)	N	None parity bit
	O	Odd parity
	E	Even parity
	?	
PIN=		This command is used to specify a PIN. The default PIN is (None) and the length is not smaller than 4. The master will connect the slave first and check the pin value sent from the slave. The command is available for the S2B2485FE(I)V2 only. The master will connect the slave if the pin value is the same between both.
(Default)	1234	
	xx....xx	"xx....xx" is a 4~16 digit string or English character (in capital or lower case)
	?	Inquire the current PIN.

PROMPT=		The command is used to decide whether result messages are prompted when Setup commands are executed. The result messages are: OK/ERROR for command execution, or CONNECT/DISCONNECT/Try Connect Device for connection status.
(Default)	Y	Prompt result messages.
	N	Not prompt result messages.
	?	Inquire the current setting.
ROLE=		This command is used to specify whether the adaptor is in the master or slave role. If the device role is changed, the adaptor will reboot and all paired addresses will be cleared. The command is available when the adaptor is in DIP=N status. The command will need 1 second delay.
	M	Set the adaptor to the master role.
(Default)	S	Set the adaptor to the slave role.
	?	Inquire the current role of the adaptor.
SEARCH=?		This command is used to search for any Bluetooth device in the neighborhood within one minute. If any device is found, its name and its 12-digit-address will be listed. The search ends with a message "Inquiry ends. xx device(s) found." This command is available only when the adaptor is in the master role by manual.
STATUS=		Inquire all the current setting of the adapter.
	?	Display the current setting of the adapter
STOP=		This command is used to specify one or two stop bits of COM port. The command will need 200ms delay.
(Default)	1	One stop bit.
	1.5	One point five bit
	2	Two stop bits.
	?	Inquire the current setting.
VERSION=?		This command is used to inquiry the firmware version.

Remark: If you need to customize the command, please call.

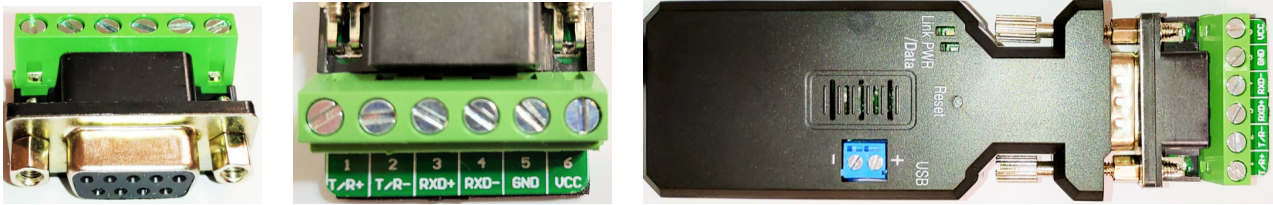
## 6. RS485 Interface

### 6.1 Pin-out definition: Male type



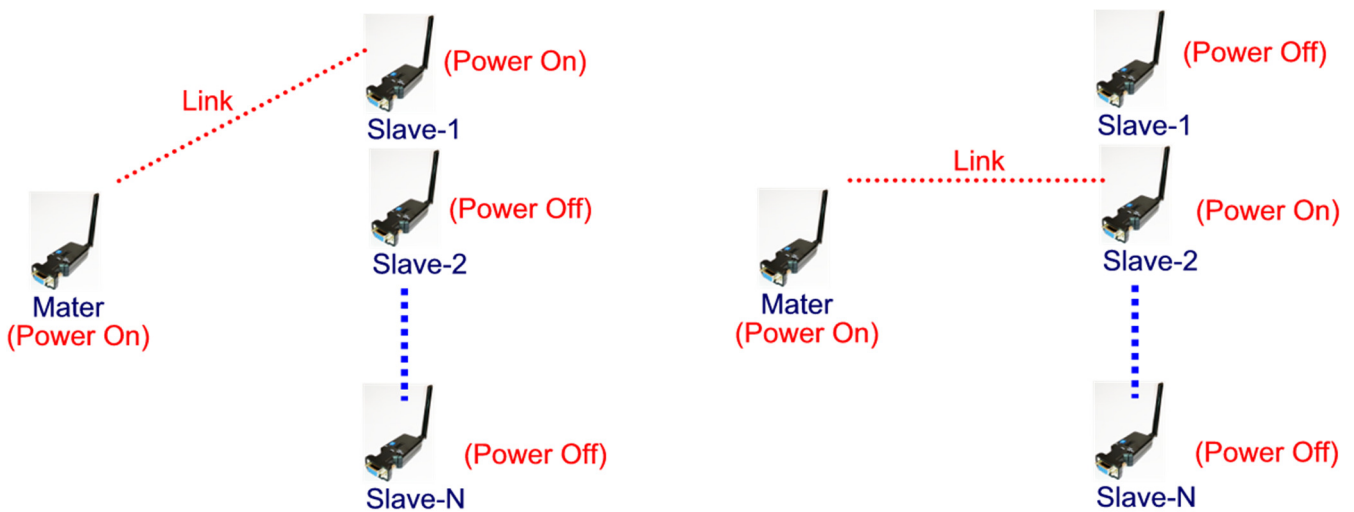
No.	Function	Remark
1	A (RX+)	D+, A=Y (RS-485)
2	B (RX-)	D-, B=Z (RS-485)
3	Y (TX+)	
4	Z (TX-)	
5	GND	
6	Vin-1	5-40VDC, Vin-1 or Vin-2 choose one
7	N/A	
8	N/A	
9	Vin-2	5-40VDC, Vin-1 or Vin-2 choose one

6.2 DB9 to 6P Terminal block connector:

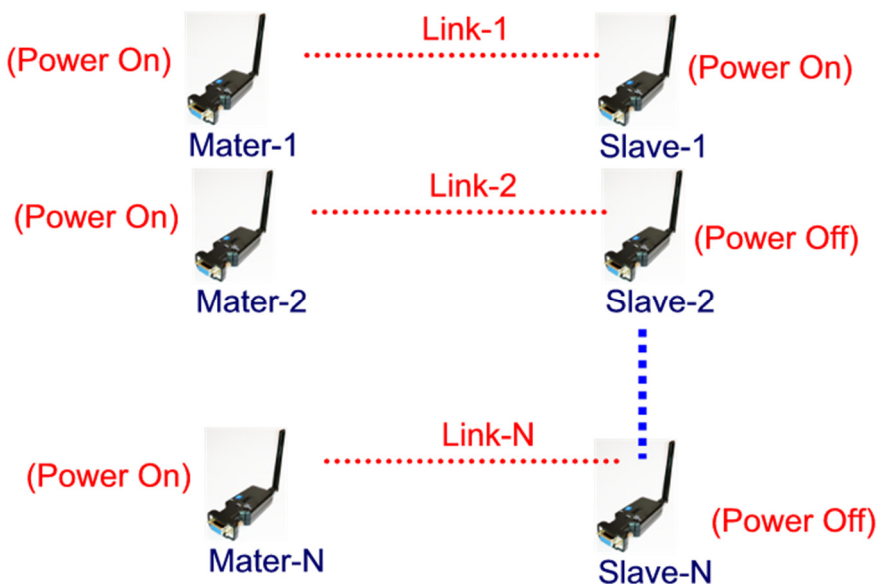


7. Master mode applications: Set one adapter as the master role by the command “role=m”. The “auto=y” and “one=y” command is available under the role=m. The “one=y” command is available under the “auto=y”. The pin code must be the same for the paired master and slave.

7.1 “AUTO=Y”: Auto link any slave with the start mac. Address “0012” or “0019”. The “0018” is not available. The master will re-link other slaves when the master or slave restart. The “auto=y” command is available under the “role=m”.



7.2 “ONE=Y”: The master will link with the first link slave after restart. It will auto link any slave with the start mac. Address “0012” or “0019”. The “0018” is not available. The master will link with the new slave when reset to default value. The “one=y” command is available under the “role=m” or “auto=y”.

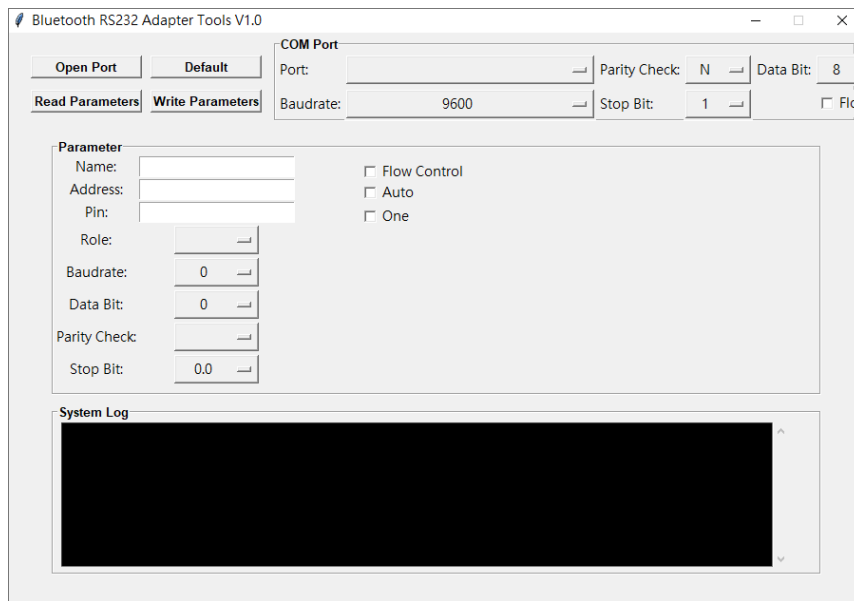


### 7.3 Bridge: Extend the transmission range.



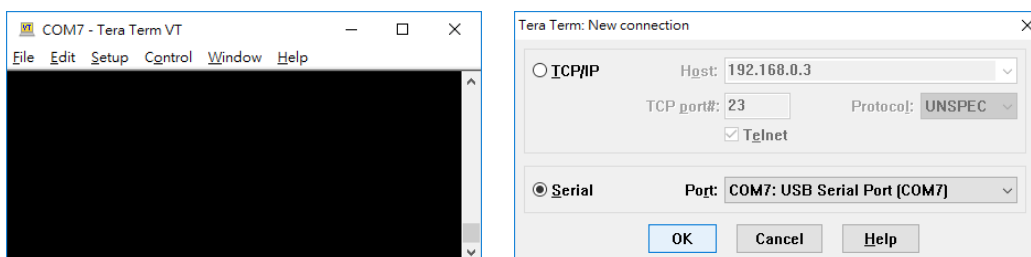
## 9. Configuration and test:

### 9.1 PC software: Please contact the supplier.



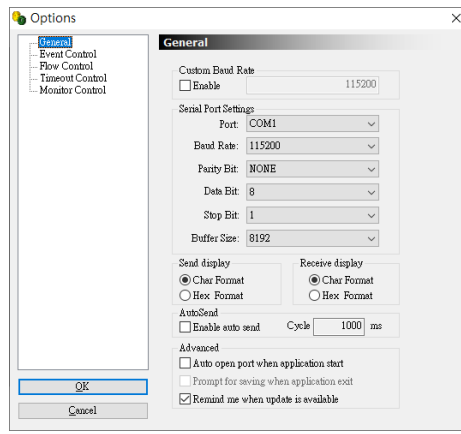
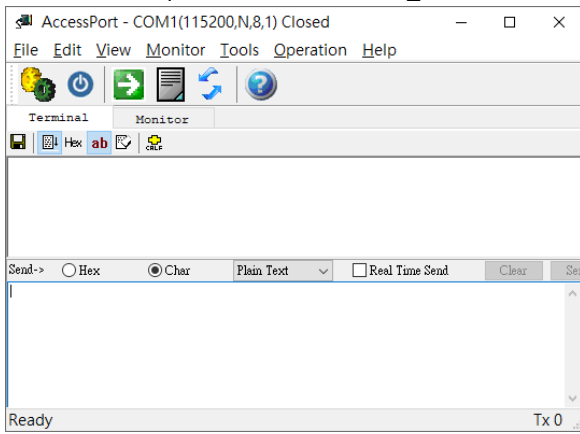
### 9.2 3<sup>rd</sup> party Terminal: Download the “Teraterm” software to set the AT command or test the data transmission. ASCII characters only.

Download link: <https://ttssh2.osdn.jp/index.html.en>

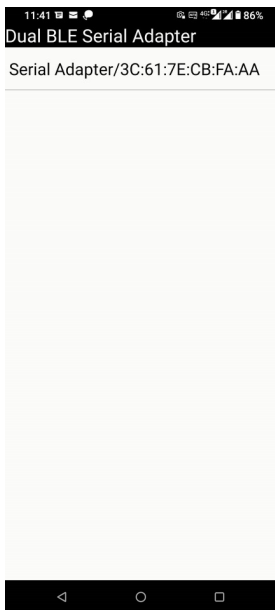


### 9.3 3<sup>rd</sup> party Terminal: Download the “Accessport” software to set the AT command or test the data transmission. ASCII or Hex characters is available.

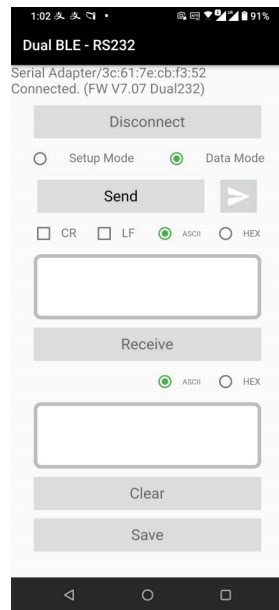
Download link: <http://www.sudt.com/en/ap/>



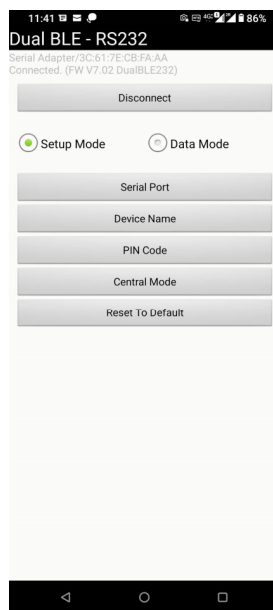
### 9.4 Smartphone:



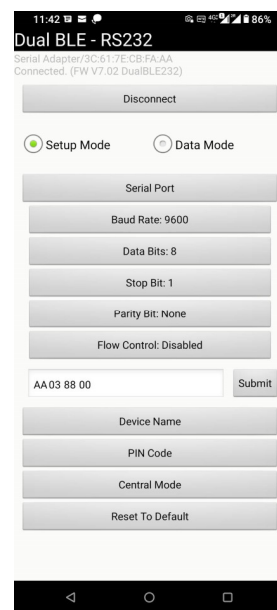
Device List



Terminal



Configuration



Serial Port

#### 9.4.1 APP Download: Android:



#### iOS:

